



BLOSSOMS

by the Park

博盛苑

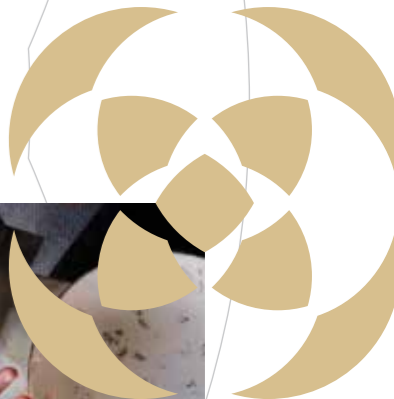
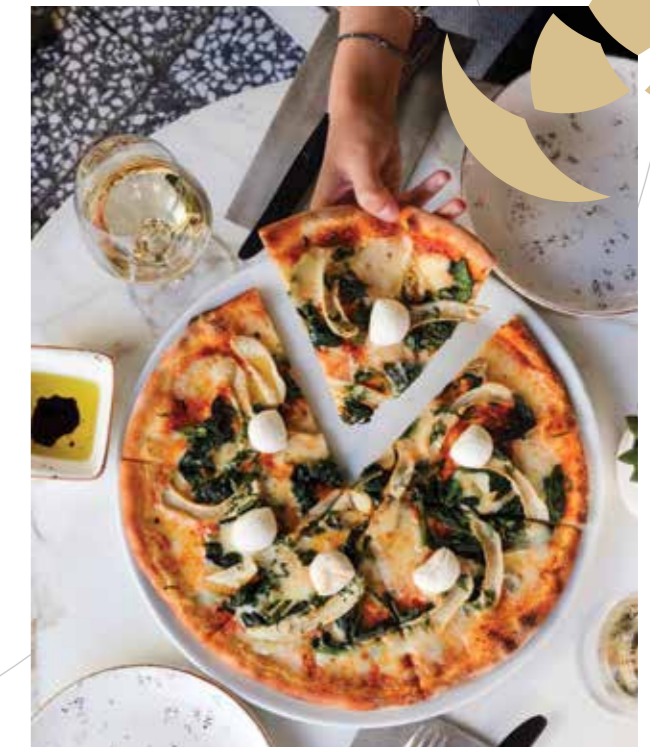
The Good Life IN FULL BLOOM

Welcome to a place where brilliance thrives.
Where nature meets innovation.
Where science meets technology.
And where live-and-work meets learn-and-play.

In this marvelous world where great minds meet,
excellence begets excellence.
Blossoming right at your doorstep.



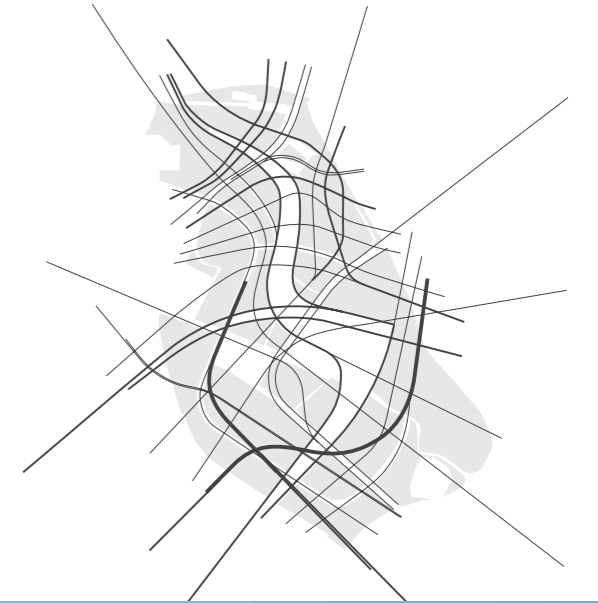
BLOSSOMS
by the Park
博盛苑



TAKE ROOT IN SINGAPORE'S SMARTEST ENCLAVE AT THE HEART OF THE ZAHA HADID MASTERPLAN

Blossoms by the Park is located at one-north, Singapore's knowledge-intensive enclave designed and master planned by world-renowned Zaha Hadid Architects.

In this intricately planned neighbourhood, your home is at the epicentre of research, development and technology amidst very distinct habitats – nature parks, leisure niches, educational institutions and retail amenities – so you can live, work, play and learn amongst the smartest of the smart.





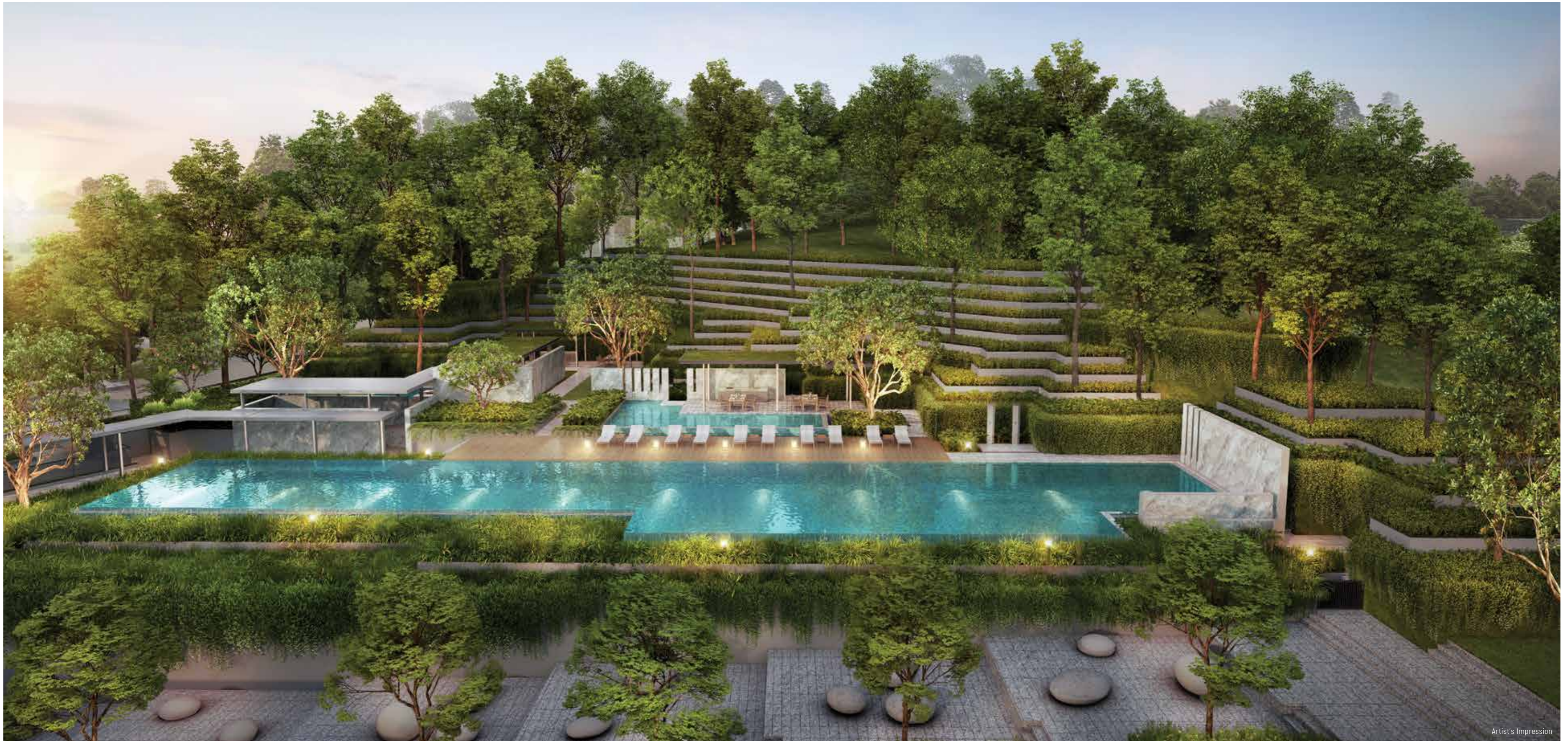
A
MONOLITH
of Modern Luxuries
AMONG
GIANTS

THE TALLEST RESIDENTIAL TOWER

Rising 27 Storeys From one-north Park



Imagine the open views as you gaze at your surroundings from one-north's tallest residential tower. Made even loftier as it sits on elevated ground, your home at Blossoms by the Park will provide a panoramic vista of the powerhouses of technology in your backyard as well as the verdant greenery of one-north Park spanning 16 hectares across the entire length of your enclave.



HARMONISING NATURE AND MODERNITY IN INTERLOCKING TOPOGRAPHIES

This new residential development is designed with nature, within nature and amidst a myriad of habitats for cosmopolitan living. Luxurious dwellings link gardens, leisure spaces, waterscapes, co-working places and an urban retail cluster.

SEAMLESSLY CONNECTING YOU TO

one-north Park



Artist's Impression

**EVERY ARRIVAL IS
A GRAND SETTING**

Return from nature to a striking statement reception and a grand arrival within. The recurring theme is superb luxe living.

LUSHNESS TIER UPON TIER



Blossoms by the Park is a home with places that residents will care about. Expanses of land are freed up, creating sweeping vistas of lush greenery, while integrating facilities with covered walkways for easy access between spaces.

TRANQUILITY IN LUXURIOUS SANCTUARIES

Making views, nature and water the main focus of our leisure realms, our architects ensure your tranquil escapes deliver serenity even as the bustle of the country's innovation district is hotting up just right outside.



Artist's Impression

THE RIGHT BALANCE BETWEEN WORKOUTS AND WORKING AT HOME



Careful planning acknowledges the importance of entertainment – parties, casual gatherings, cosy relaxations – allowing work and play balance for you and your guests.

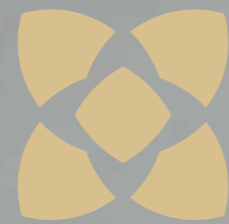


From function room to family pavilion, well-equipped gymnasium and family-friendly poolside activities, all elements come together to demonstrate the thought behind well-apportioned spaces.

DELIVERING A MODERN-DAY ECOSYSTEM OF CONVENIENCES IN NATURAL SURROUNDS BELOW YOUR ABODE



At Blossoms by the Park, residents have easy access to a retail cluster at the ground level. Brimming with vibrancy, light and character, shop and dine options are within minutes from your front door.



BE

ANYWHERE

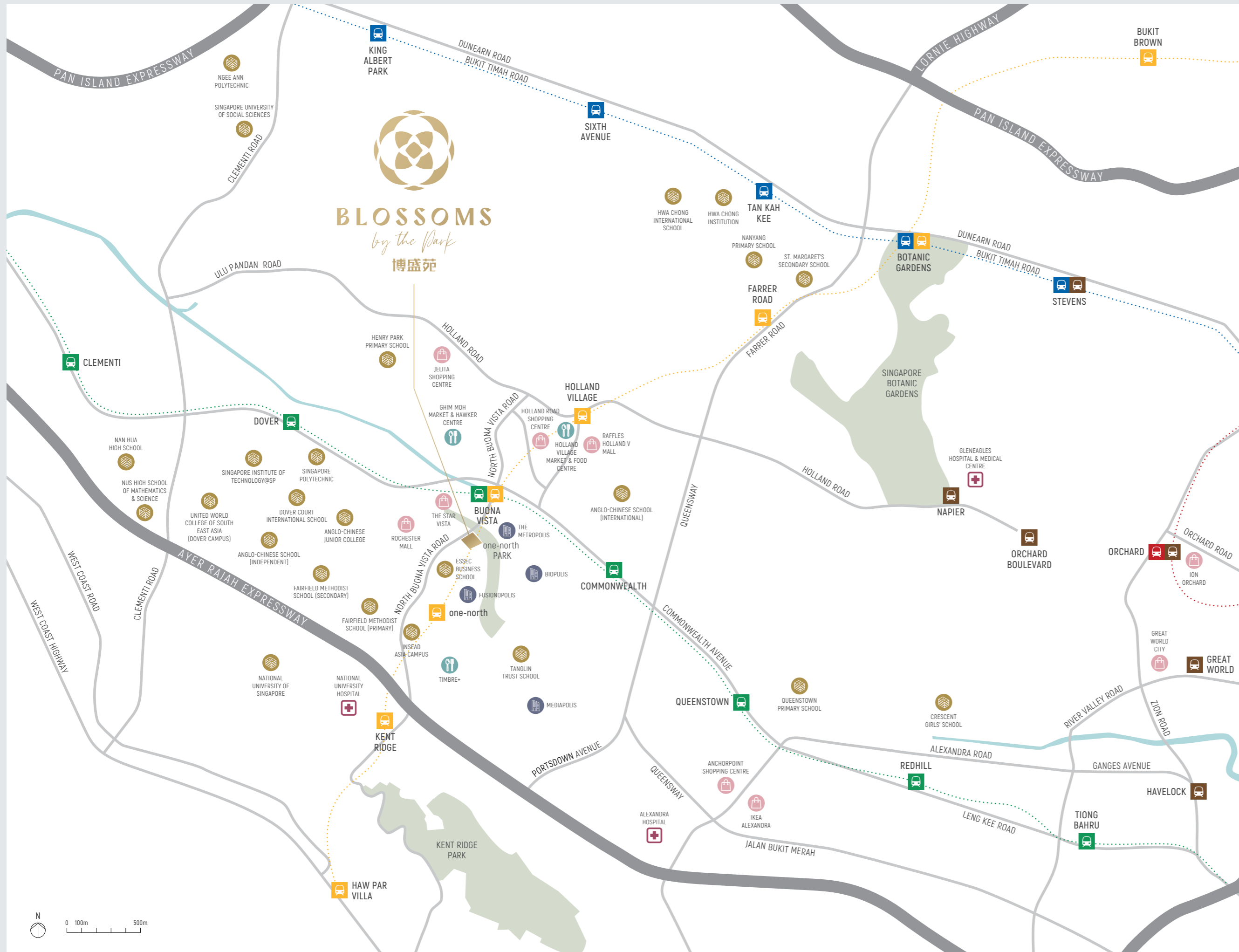
EVERYWHERE

EVERY TIME



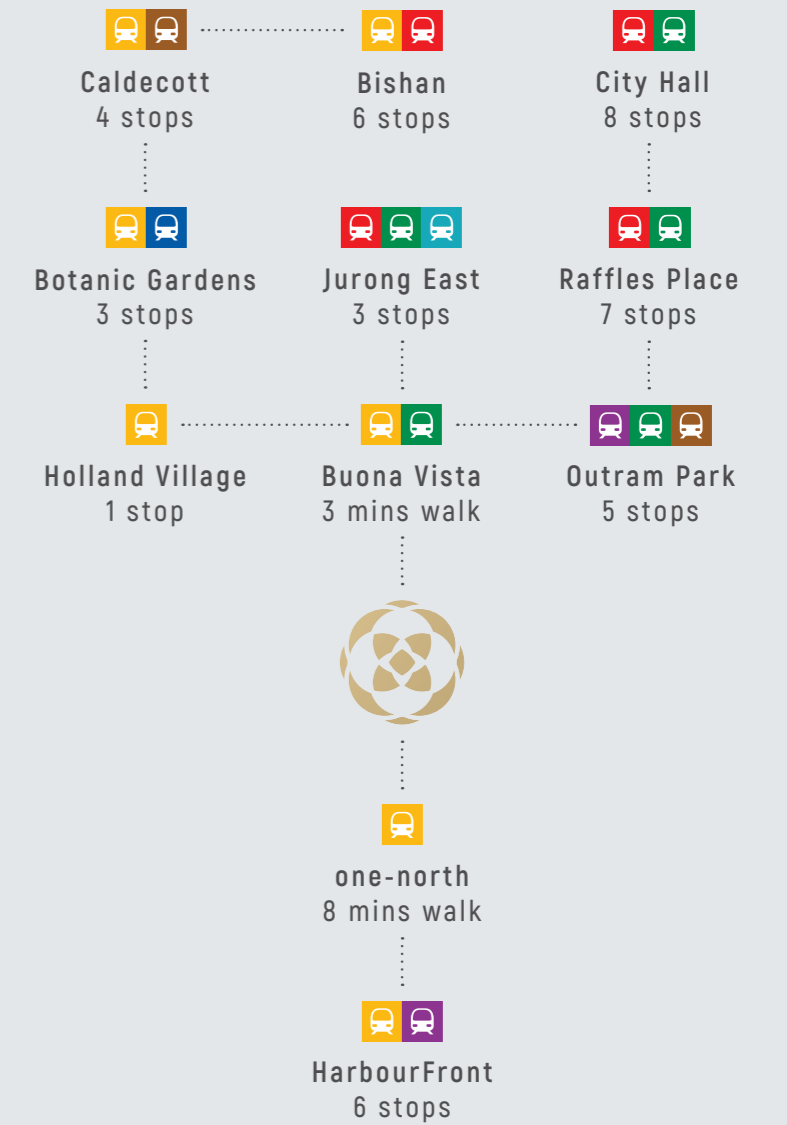
**FANTASTIC PROXIMITY TO A
LIFE MADE EXTRAORDINARY**

one-north is the glittering jewel of Singapore's innovation district. It is nothing short of perfect when it comes to connectivity and its nearness to destinations that make this address in District 5 highly sought after.



A FOUNT OF CONNECTEDNESS

When it comes to transport connectivity, Blossoms by the Park provides proximity to major roads and MRT stations, with the CBD accessible via the Ayer Rajah Expressway in 15 minutes. A short walk takes you to one-north or Buona Vista MRT stations, connecting you to the Circle and East-West Line.





MEDIAPOLIS

For the infocomm, media, physical sciences and engineering sectors, Mediapolis has been created to provide a synergistic business environment for the sector to thrive and grow. From soundstages with green screen capabilities, digital production and broadcasting facilities to digital media schools, work lofts and incubators, and intellectual property creation and digital rights management, Mediapolis has everything and anything that the world of media requires.

AT ONE WITH one-north

A MODERN HUB OF INTELLECTUALISM

BIOPOLIS

Biopolis is the premier research hub from JTC for biomedical sciences, Singapore's engine of economic growth. It is home to leading public and private biomedical research institutes and organisations, and anchors the development of the entire R&D value chain of life sciences. This includes basic drug discovery, clinical development and medical technology research.

Now on its six phase of development, Biopolis is within walking distance to Buona Vista MRT station, and houses multiple restaurants, cafes and eateries.



FUSIONOPOLIS

Thirty acres of land have been dedicated to Fusionopolis, the research and development core of Singapore at one-north. Within its fold lives a conducive environment to incubate the growth of the information and communications technology (ICT), media, physical sciences and engineering industries.

This fertile ground for scientific breakthroughs attracts the smartest from all over the world and in every field for collaborative discoveries. This is your opportune time to be a part of this illustrious community.



BLOSSOMS BY THE PARK LIES AT THE HEART OF one-north WHERE THE SMART COMES TO LIVE, WORK AND PLAY. WITHIN LIES A CRADLE OF INNOVATION - WHERE THE FUTURE IS DREAMT UP.

THE SMARTEST LIVEABLE DISTRICT IN THE MOST LIVEABLE CITY



LEISURE

LEARNING

LIFESTYLES



This is where sophisticates flourish. Where big tech companies and research centres are calling home, and destinations of distinctions are thriving.

For residents at Blossoms by the Park, being surrounded by the best destinations is just one of the pleasures of owning a home here.

SHOPPING & LIFESTYLE CONVENIENCES

Rochester Mall	1 min walk
Rochester Commons (U/C)	2 mins walk
Holland Road Shopping Centre	1 MRT stop
The Clementi Mall	2 MRT stops
VivoCity	6 MRT stops
Jelita Shopping Centre	7 mins drive
IKEA Alexandra	8 mins drive
Great World City	14 mins drive
ION Orchard	14 mins drive



BUSINESS HUBS & MEDICAL CENTRES

Biopolis	5 mins walk
Fusionopolis	9 mins walk
Mediapolis	4 mins drive
Alexandra Hospital	9 mins drive
National University Hospital	2 MRT stops



**FOR DEDICATED FOODIES,
A VERITABLE ARRAY OF
CHOICES AWAITS YOU**



Raise your expectations – your zip code is cuisine-rich. In this enclave where the world's great minds converge, a global gastronomic village is firmly rooted, cooking up local fares and the finest cuisines from around the world.



DINING HUBS

- The Star Vista 5 mins walk
- Timbre+ 12 mins walk

- Holland Village Market & Food Centre 1 MRT stop

- Ghim Moh Market & Hawker Centre 5 mins drive
- Colbar 5 mins drive
- Dempsey 12 mins drive



ONE OF THE BEST-SERVED LOCATIONS FOR ACHIEVERS OF ALL AGES



When it comes to learning institutions, options are a short distance in every direction. Seek and you will most certainly find the pedagogic culture of your choice, from primary schools to institutes of higher learning.



SCHOOLS

- Fairfield Methodist Primary School
7 mins walk
- Fairfield Methodist Secondary School
9 mins walk / 3 mins drive
- Tanglin Trust School
4 mins drive
- Dover Court International School
5 mins drive
- Henry Park Primary School
6 mins drive
- St. Margaret's Secondary School
9 mins drive
- Nanyang Primary School
11 mins drive
- Crescent Girls' School
12 mins drive

HIGHER EDUCATION

- ESSEC Business School
1 min walk
- Anglo-Chinese Junior College
4 mins walk
- INSEAD Asia Campus
8 mins walk
- Anglo-Chinese School (Independent)
5 mins drive
- National University of Singapore
6 mins drive
- United World College of South East Asia
(Dover Campus)
7 mins drive
- Singapore Polytechnic
6 mins drive
- Anglo-Chinese School (International)
7 mins drive
- Singapore Institute of Technology @ SP
7 mins drive
- NUS High School of Math and Science
8 mins drive
- Singapore Institute of Management
11 mins drive



The sensations of nature are all a stone's throw away, ready for you to take them all in. With eyes open and ears pricked up, let your forest bathing experience take place within minutes of you waking up for the day.

NOW STEP INTO THE GOOD LIFE IN ITS MOST NATURAL HABITATS



COASTAL WALK

From historical Fort Siloso to the pristine shores of Tanjung Rimau.



THE SOUTHERN RIDGES

10 km of green, open spaces connecting Mount Faber Park, Telok Blangah Hill Park, HortPark, Kent Ridge Park and Labrador Nature Reserve.



PARK CONNECTORS

A network of park connectors presents a palette of recreational opportunities and enhanced accessibility to natural spaces.

NATURE & RECREATION

one-north Park	Right next door	Singapore Botanic Gardens	12 mins drive
Queenstown Stadium	6 mins drive	MacRitchie Reservoir Park	13 mins drive
The Southern Ridges	8 mins drive	Sentosa	15 mins drive
Mount Faber Park	12 mins drive	The Singapore Island Country Club	15 mins drive



**YOU
WILL BE
IN A
CONSTANT
STATE OF
AWE**



EVERY UNIT,
A WIDE HORIZON

EVERY GLIMPSE,
A VAST NATURE

COMING HOME IS A SWEET RETREAT

Quality materials, earthy colours and openness towards nature help define Blossoms by the Park. At the same time, placing comfort and refined aesthetics in the design helps create a thoroughly contemporary home. A digital smart lock from Igloohome ensures safety and security, while keeping access as convenient as possible.

igloohome



For illustration Only



A RECIPE FOR DELIGHT

A showcase of modern sophistication, the kitchen features finely crafted details, with smart kitchen appliances from Kuche bringing a mark of distinction to your home cooking.

küche

EVERY TURN REVEALS ETHEREAL COMFORTS



For Illustration Only



For Illustration Only

Space. Place. Materials. These elements create the foundation for the 275 units cleverly curated for residents who prefer life in the innovation lane. Fittings and fixtures from Grohe and Geberit help create an atmosphere of newness in luxurious surroundings.



SMART INSIDE AND OUT



Each unit at Blossoms by the Park is pre-wired for an integrated digital system, with in-built digital locks and smart kitchen appliances. Smart facilities integrate technology into your daily lives - bringing you convenience and ease, anytime you want it.



SMART OVEN

Remotely manage your baking with the Smart Oven - with sensors to perfect your dish and help you succeed with your cooking and baking.



SMART HOB

The Smart Hob features an intelligent temperature regulation function that dynamically adjusts the temperature in line with your recipe, keeping the heat constant. An additional flame failure device prevents spillage from entering the hob, ensuring safety and fuss-free maintenance.



SMART HOOD

The Smart Hood filters water vapour and cooking odours out of the air during the cooking process, while staying integrated with the Smart Hob, giving you a hassle-free cooking experience.



DIGITAL LOCK

Security at your fingertips - the Digital Lock from Igloohome ensures you'll always be safe and secure, without going through the hassle of managing keys.



EV FAST CHARGING

Fast EV charging spots ensure you're doing your part for a greener Earth, with a convenient way to charge your electric car - so you can relax, however far you are heading.

NORTH BUONA VISTA ROAD



SITE PLAN

1ST STOREY

- 1 Arrival Courtyard
- 2 Arrival Water Feature
- 3 Bicycle Hub
- 4 Lift 1 (Basement 1 to 2nd Storey)
- 5 Lift 2 (1st to 2nd Storey)
- 6 Public Plaza 3

- A Bin Point
- B Bin Centre
- C Substation
- D Guard Post

2ND STOREY

- 7 Public Plaza 2
- 8 Public Plaza 1
- 9 Kid's Play Area
- 10 Function Room
- 11 Entertainment Room
- 12 Gymnasium
- 13 Male & Female Changing Room with Steam Room
- 14 Yoga Deck
- 15 Greenery Verandah
- 16 Viewing Pavilion
- 17 Social Lawn

- C1 Commercial Unit 2 (Basement 1)
- C2 Commercial Unit 3
- C3 Commercial Unit 4

- 18 Kid's Pool
- 19 Party Lawn
- 20 Family Pavilion
- 21 BBQ Pavilion
- 22 Community Garden
- 23 Water Pavilion
- 24 Wellness Pool
- 25 50m Lap Pool
- 26 Pool Deck
- 27 Side Gate (To one-north Park)
- C4 Commercial Unit 1 (Access from Public Plaza)



SLIM BARRACKS RISE

TO CARPARK

IN OUT

FEDERAL HIGHWAY

SITE PLAN

- E Genset for Residential & Commercial Uses (3rd Storey)
- Roof Water Tank



SCHEMATIC DIAGRAM

9 SLIM BARRACKS RISE S139742

UNIT	FLOOR	1	2	3	4	5	6	7	8	9	10	11
27		C1-PH	C3-PH	C3-PH*	B1-PH	B2-PH	D2-PH	D1-PH	A1-PH	B2-PH	B1-PH*	C2-PH
26		C1	C3	C3*	B1	B2	D2	D1	A1	B2	B1*	C2
25		C1	C3	C3*	B1	B2	D2	D1	A1	B2	B1*	C2
24		C1	C3	C3*	B1	B2	D2	D1	A1	B2	B1*	C2
23		C1	C3	C3*	B1	B2	D2	D1	A1	B2	B1*	C2
22		C1	C3	C3*	B1	B2	D2	D1	A1	B2	B1*	C2
21		C1	C3	C3*	B1	B2	D2	D1	A1	B2	B1*	C2
20		C1	C3	C3*	B1	B2	D2	D1	A1	B2	B1*	C2
19		C1	C3	C3*	B1	B2	D2	D1	A1	B2	B1*	C2
18		C1	C3	C3*	B1	B2	D2	D1	A1	B2	B1*	C2
17		C1	C3	C3*	B1	B2	D2	D1	A1	B2	B1*	C2
16		C1	C3	C3*	B1	B2	D2	D1	A1	B2	B1*	C2
15		C1	C3	C3*	B1	B2	D2	D1	A1	B2	B1*	C2
14		C1	C3	C3*	B1	B2	D2	D1	A1	B2	B1*	C2
13		C1	C3	C3*	B1	B2	D2	D1	A1	B2	B1*	C2
12		C1	C3	C3*	B1	B2	D2	D1	A1	B2	B1*	C2
11		C1	C3	C3*	B1	B2	D2	D1	A1	B2	B1*	C2
10		C1	C3	C3*	B1	B2	D2	D1	A1	B2	B1*	C2
9		C1	C3	C3*	B1	B2	D2	D1	A1	B2	B1*	C2
8		C1	C3	C3*	B1	B2	D2	D1	A1	B2	B1*	C2
7		C1	C3	C3*	B1	B2	D2	D1	A1	B2	B1*	C2
6		C1	C3	C3*	B1	B2	D2	D1	A1	B2	B1*	C2
5		C1	C3	C3*	B1	B2	D2	D1	A1	B2	B1*	C2
4		C1	C3	C3*	B1	B2	D2	D1	A1	B2	B1*	C2
3		C1	C3	C3*	B1	B2	D2	D1	A1	B2	B1*	C2
2		FACILITIES DECK / F&B (ACCESSIBLE ONLY FROM PUBLIC PLAZA)										
1		DROP-OFF / COMMERCIAL CARPARK / F&B										
BASEMENT 1		M&E AREAS / RESIDENTIAL CARPARK / F&B										
BASEMENT 2		M&E AREAS / RESIDENTIAL CARPARK										

- 1 - BEDROOM + STUDY
- 2 - BEDROOM
- 2 - BEDROOM + STUDY
- 3 - BEDROOM
- 3 - BEDROOM DUAL-KEY
- 4 - BEDROOM
- 4 - BEDROOM PREMIUM
- PH PENTHOUSE
- *MIRROR IMAGE



1 - BEDROOM + STUDY

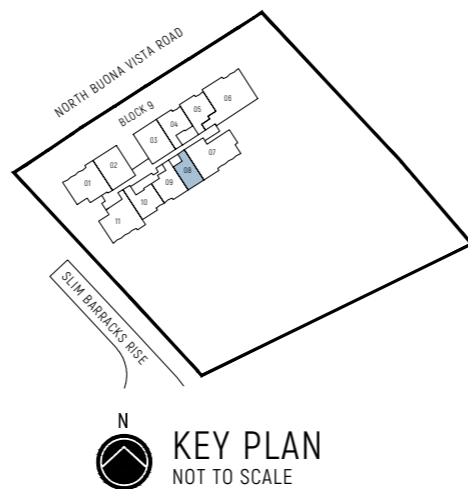
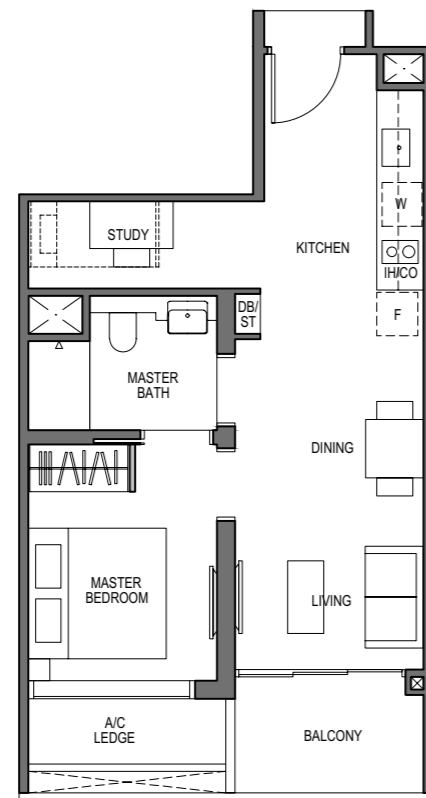
TYPE A1

51 sq m / 549 sq ft

BLOCK 9

UNIT

#03-08 TO #26-08



LEGEND (where applicable):

- Non-Structural Wall
- Structural Wall (no hacking allowed)
- Services Void Space (excluded from strata area)
- F - Fridge
- IH - Induction Hob
- ST - Storage
- W - Washer
- GH - Gas Hob
- DB - Distribution Board
- HS - Household Shelter
- CO - Convection Oven
- WC - Water Closet

* - Mirror Image

The balcony shall not be enclosed. Only approved balcony screens are to be used. For illustration of the approved balcony screen, please refer to diagram annexed hereto as "Annexure A". All plans are subjected to amendments as may be approved by the relevant authorities. Floor areas are approximate measurements and are subjected to final survey. All RC Ledge (Reinforced Concrete Ledge) are excluded from strata area. BP Approval No. A1720-00020-2021-BP02 dated 17/03/2023

1 - BEDROOM + STUDY

TYPE A1-PH

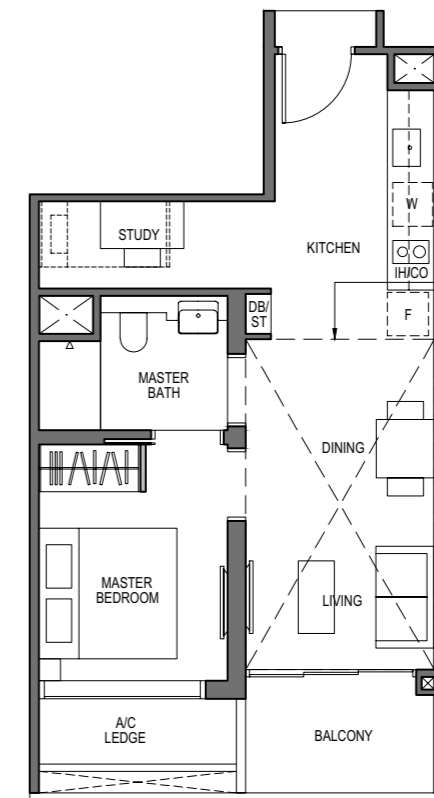
64 sq m / 689 sq ft

[inclusive of 13 sq m / 140 sq ft of void area (high ceiling)]

BLOCK 9

UNIT

#27-08



Dotted Line denotes Strata Void Area for Type A1-PH which is part of the Strata Void

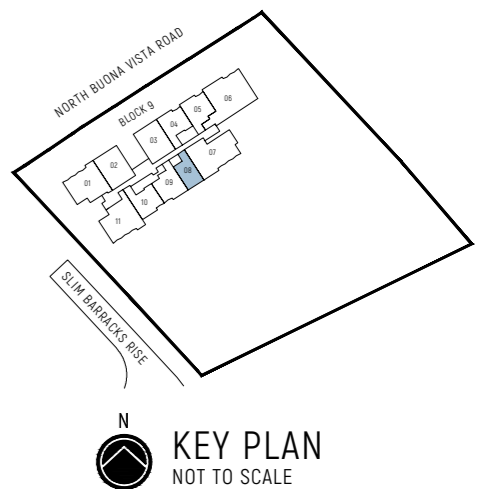


LEGEND (where applicable):

- Non-Structural Wall
- Structural Wall (no hacking allowed)
- Services Void Space (excluded from strata area)
- F - Fridge
- IH - Induction Hob
- ST - Storage
- W - Washer
- GH - Gas Hob
- DB - Distribution Board
- HS - Household Shelter
- CO - Convection Oven
- WC - Water Closet

* - Mirror Image

The balcony shall not be enclosed. Only approved balcony screens are to be used. For illustration of the approved balcony screen, please refer to diagram annexed hereto as "Annexure A". All plans are subjected to amendments as may be approved by the relevant authorities. Floor areas are approximate measurements and are subjected to final survey. All RC Ledge (Reinforced Concrete Ledge) are excluded from strata area. BP Approval No. A1720-00020-2021-BP02 dated 17/03/2023



2 - BEDROOM

TYPE B1

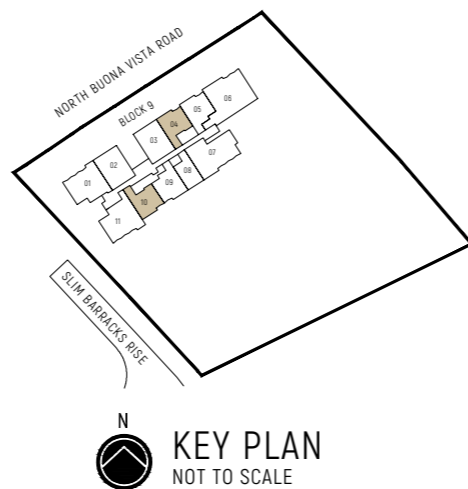
63 sq m / 678 sq ft

BLOCK 9

UNIT

#03-04 TO #26-04

#03-10* TO #26-10*



0 1 3 5M

LEGEND (where applicable):

- Non-Structural Wall
- Structural Wall (no hacking allowed)
- Services Void Space (excluded from strata area)
- F - Fridge
- IH - Induction Hob
- ST - Storage
- W - Washer
- GH - Gas Hob
- DB - Distribution Board
- HS - Household Shelter
- CO - Convection Oven
- WC - Water Closet

* - Mirror Image

The balcony shall not be enclosed. Only approved balcony screens are to be used. For illustration of the approved balcony screen, please refer to diagram annexed hereto as "Annexure A". All plans are subjected to amendments as may be approved by the relevant authorities. Floor areas are approximate measurements and are subjected to final survey. All RC Ledge (Reinforced Concrete Ledge) are excluded from strata area. BP Approval No. A1720-00020-2021-BP02 dated 17/03/2023

2 - BEDROOM

TYPE B1-PH

77 sq m / 829 sq ft

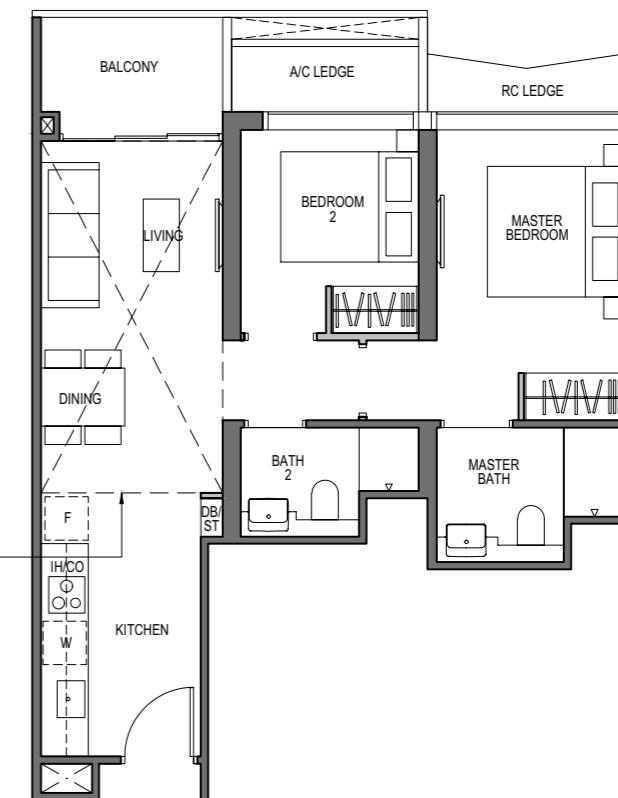
[inclusive of 14 sq m / 151 sq ft of void area (high ceiling)]

BLOCK 9

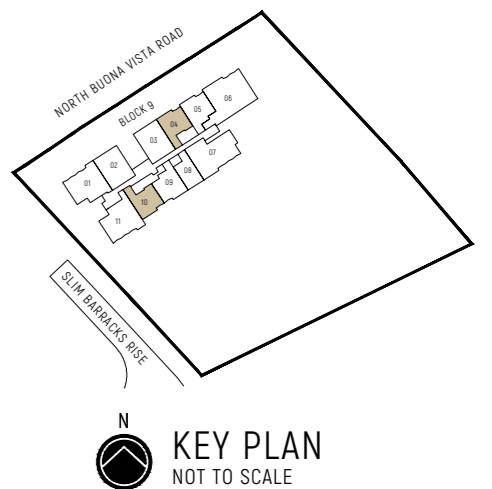
UNIT

#27-04

#27-10*



Dotted Line denotes Strata Void Area for Type B1-PH which is part of the Strata Void



0 1 3 5M

LEGEND (where applicable):

- Non-Structural Wall
- Structural Wall (no hacking allowed)
- Services Void Space (excluded from strata area)
- F - Fridge
- IH - Induction Hob
- ST - Storage
- W - Washer
- GH - Gas Hob
- DB - Distribution Board
- HS - Household Shelter
- CO - Convection Oven
- WC - Water Closet

* - Mirror Image

The balcony shall not be enclosed. Only approved balcony screens are to be used. For illustration of the approved balcony screen, please refer to diagram annexed hereto as "Annexure A". All plans are subjected to amendments as may be approved by the relevant authorities. Floor areas are approximate measurements and are subjected to final survey. All RC Ledge (Reinforced Concrete Ledge) are excluded from strata area. BP Approval No. A1720-00020-2021-BP02 dated 17/03/2023

2 - BEDROOM + STUDY

TYPE B2

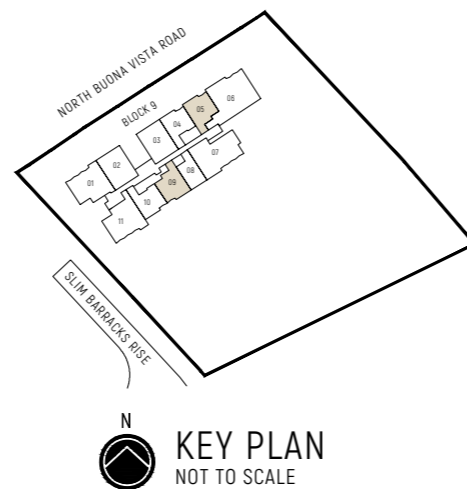
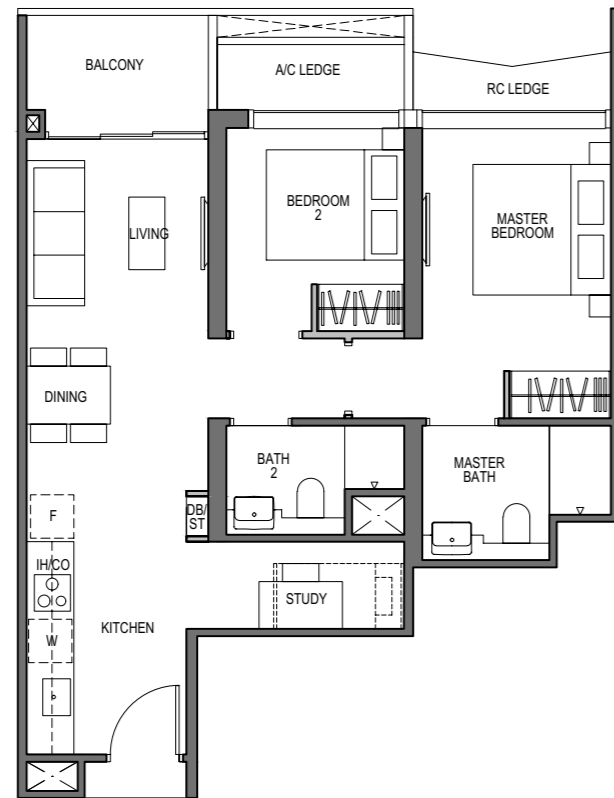
67 sq m / 721 sq ft

BLOCK 9

UNIT

#03-05 TO #26-05

#03-09 TO #26-09



LEGEND (where applicable):

Non-Structural Wall	F - Fridge	W - Washer	HS - Household Shelter
Structural Wall <small>(no hacking allowed)</small>	IH - Induction Hob	GH - Gas Hob	CO - Convection Oven
Services Void Space <small>(excluded from strata area)</small>	ST - Storage	DB - Distribution Board	WC - Water Closet

* - Mirror Image

The balcony shall not be enclosed. Only approved balcony screens are to be used. For illustration of the approved balcony screen, please refer to diagram annexed hereto as "Annexure A". All plans are subjected to amendments as may be approved by the relevant authorities. Floor areas are approximate measurements and are subjected to final survey. All RC Ledge (Reinforced Concrete Ledge) are excluded from strata area. BP Approval No. A1720-00020-2021-BP02 dated 17/03/2023

2 - BEDROOM + STUDY

TYPE B2-PH

81 sq m / 872 sq ft

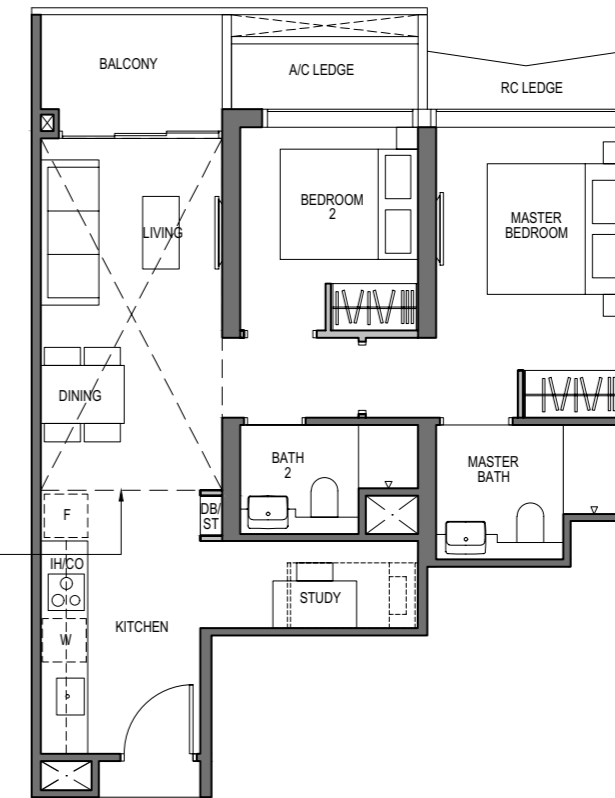
[inclusive of 14 sq m / 151 sq ft of void area (high ceiling)]

BLOCK 9

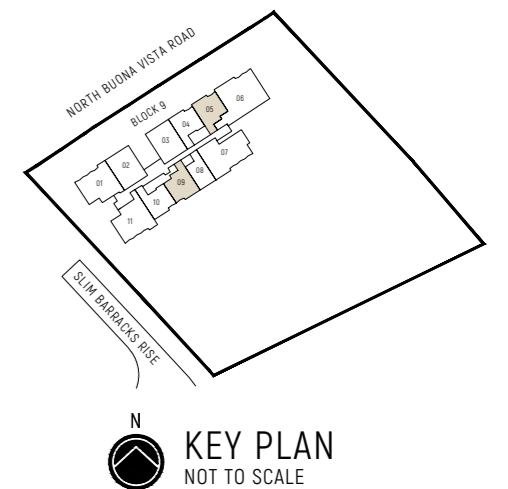
UNIT

#27-05

#27-09



Dotted Line denotes Strata Void Area for Type B2-PH which is part of the Strata Void



LEGEND (where applicable):

Non-Structural Wall	F - Fridge	W - Washer	HS - Household Shelter
Structural Wall <small>(no hacking allowed)</small>	IH - Induction Hob	GH - Gas Hob	CO - Convection Oven
Services Void Space <small>(excluded from strata area)</small>	ST - Storage	DB - Distribution Board	WC - Water Closet

* - Mirror Image

The balcony shall not be enclosed. Only approved balcony screens are to be used. For illustration of the approved balcony screen, please refer to diagram annexed hereto as "Annexure A". All plans are subjected to amendments as may be approved by the relevant authorities. Floor areas are approximate measurements and are subjected to final survey. All RC Ledge (Reinforced Concrete Ledge) are excluded from strata area. BP Approval No. A1720-00020-2021-BP02 dated 17/03/2023

3 - BEDROOM

TYPE C1

97 sq m / 1044 sq ft

BLOCK 9

UNIT

#03-01 TO #26-01

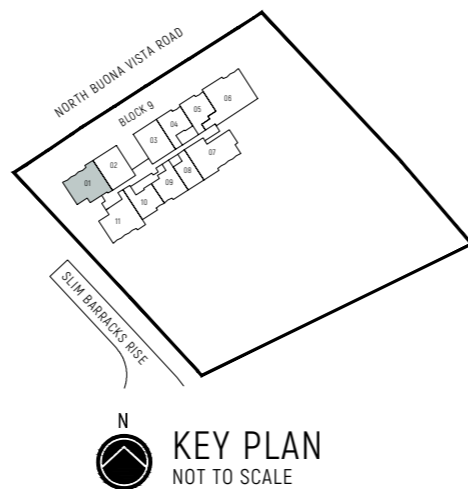


LEGEND (where applicable):

- Non-Structural Wall
- Structural Wall (no hacking allowed)
- Services Void Space (excluded from strata area)
- F - Fridge
- IH - Induction Hob
- GH - Gas Hob
- CO - Convection Oven
- W - Washer
- HS - Household Shelter
- WC - Water Closet
- ST - Storage
- DB - Distribution Board

* - Mirror Image

The balcony shall not be enclosed. Only approved balcony screens are to be used. For illustration of the approved balcony screen, please refer to diagram annexed hereto as "Annexure A". All plans are subjected to amendments as may be approved by the relevant authorities. Floor areas are approximate measurements and are subjected to final survey. All RC Ledge (Reinforced Concrete Ledge) are excluded from strata area. BP Approval No. A1720-00020-2021-BP02 dated 17/03/2023



3 - BEDROOM

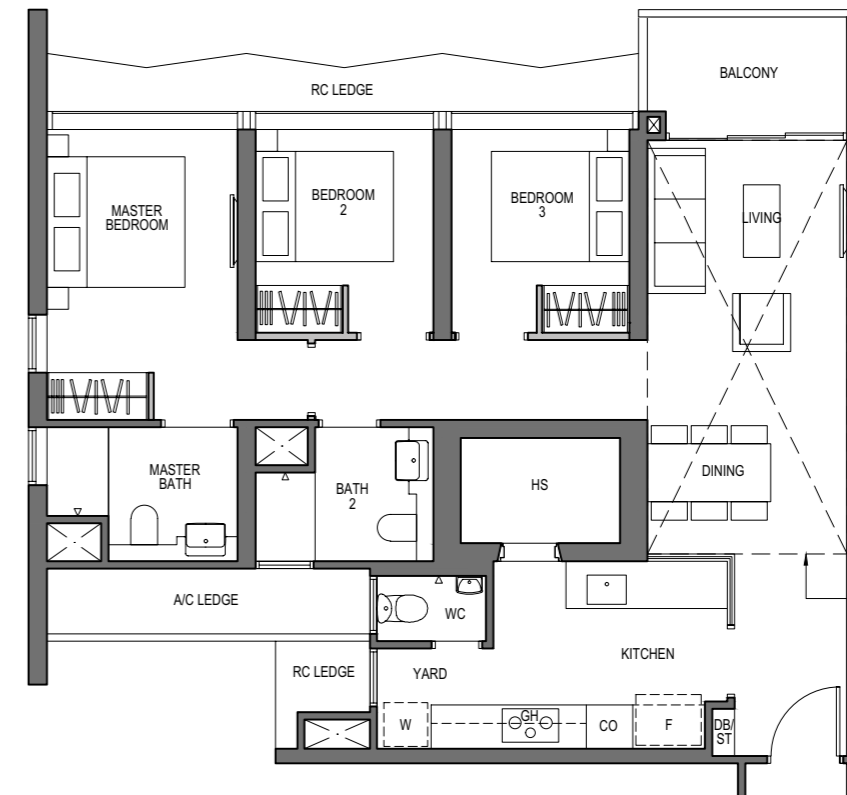
TYPE C1-PH

114 sq m / 1227 sq ft
[inclusive of 17 sq m / 183 sq ft of void area (high ceiling)]

BLOCK 9

UNIT

#27-01



Dotted Line denotes Strata Void Area for Type C1-PH which is part of the Strata Void

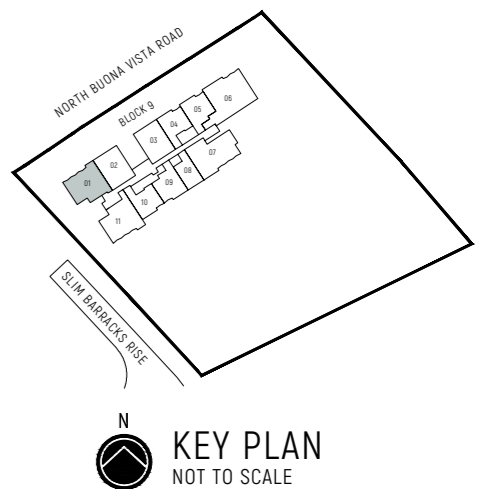


LEGEND (where applicable):

- Non-Structural Wall
- Structural Wall (no hacking allowed)
- Services Void Space (excluded from strata area)
- F - Fridge
- IH - Induction Hob
- GH - Gas Hob
- CO - Convection Oven
- W - Washer
- HS - Household Shelter
- WC - Water Closet
- ST - Storage
- DB - Distribution Board

* - Mirror Image

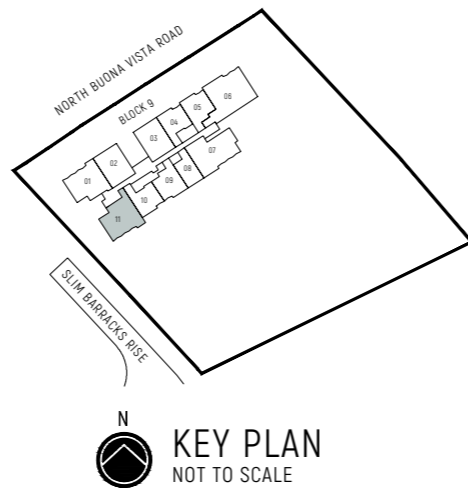
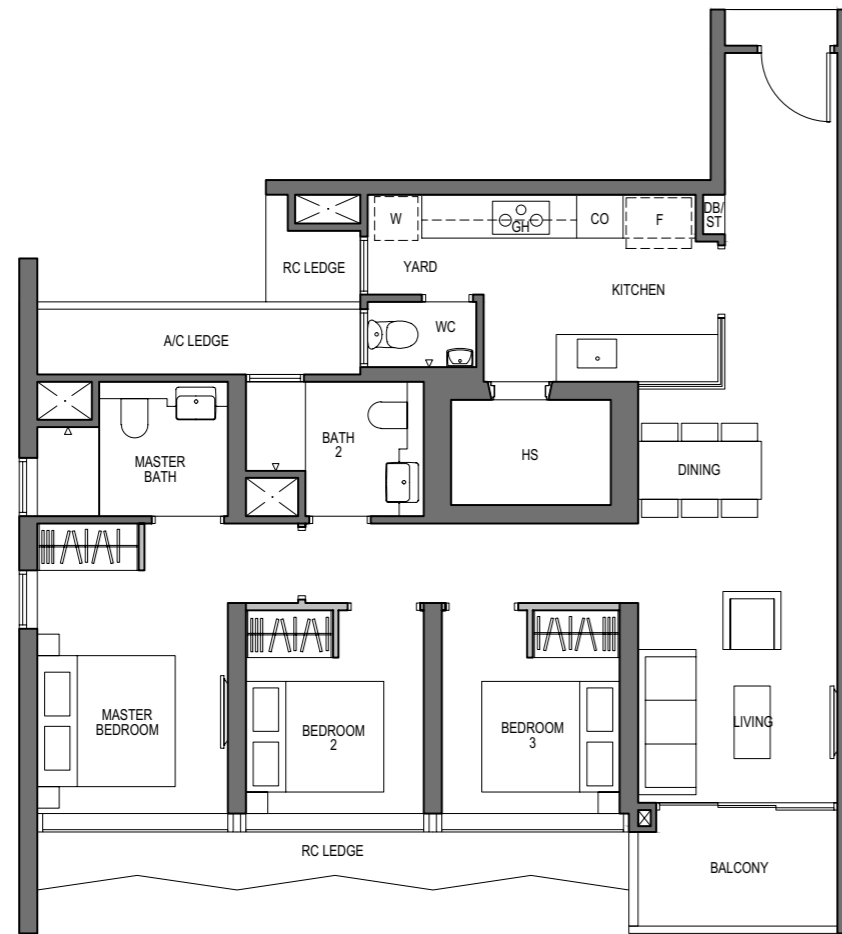
The balcony shall not be enclosed. Only approved balcony screens are to be used. For illustration of the approved balcony screen, please refer to diagram annexed hereto as "Annexure A". All plans are subjected to amendments as may be approved by the relevant authorities. Floor areas are approximate measurements and are subjected to final survey. All RC Ledge (Reinforced Concrete Ledge) are excluded from strata area. BP Approval No. A1720-00020-2021-BP02 dated 17/03/2023



3 - BEDROOM

TYPE C2
100 sq m / 1076 sq ft

BLOCK 9
UNIT
#03-11 TO #26-11



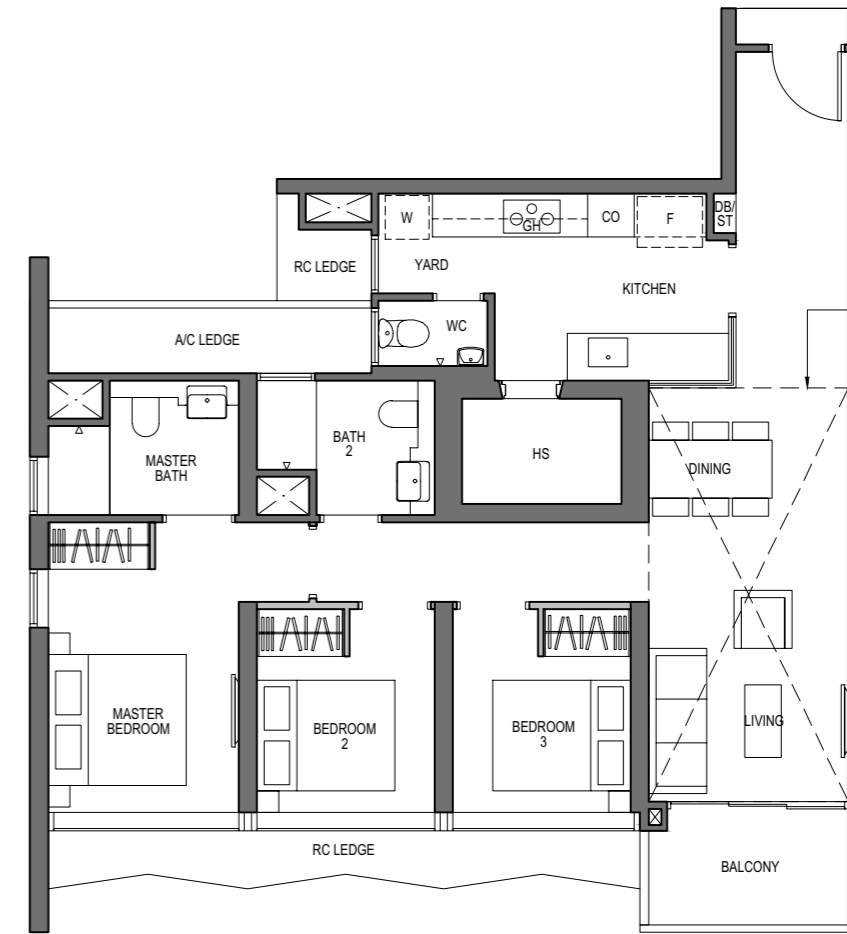
- LEGEND (where applicable):**
- Non-Structural Wall
 - Structural Wall (no hacking allowed)
 - Services Void Space (excluded from strata area)
 - * - Mirror Image
 - F - Fridge
 - IH - Induction Hob
 - ST - Storage
 - W - Washer
 - GH - Gas Hob
 - DB - Distribution Board
 - WC - Water Closet
 - HS - Household Shelter
 - CO - Convection Oven

The balcony shall not be enclosed. Only approved balcony screens are to be used. For illustration of the approved balcony screen, please refer to diagram annexed hereto as "Annexure A". All plans are subjected to amendments as may be approved by the relevant authorities. Floor areas are approximate measurements and are subjected to final survey. All RC Ledge (Reinforced Concrete Ledge) are excluded from strata area. BP Approval No. A1720-00020-2021-BP02 dated 17/03/2023

3 - BEDROOM

TYPE C2-PH
117 sq m / 1259 sq ft
[inclusive of 17 sq m / 183 sq ft of void area (high ceiling)]

BLOCK 9
UNIT
#27-11

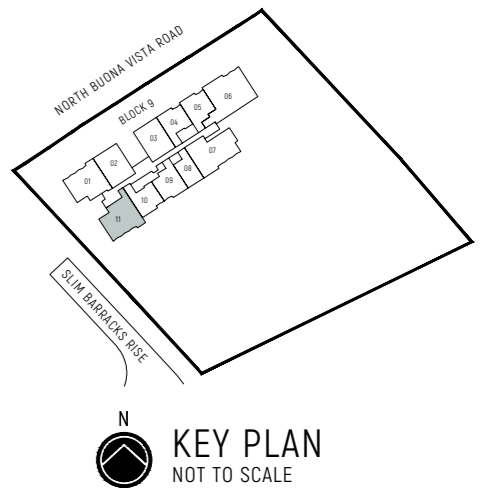


Dotted Line denotes
Strata Void Area for Type C2-PH
which is part of the Strata Void



- LEGEND (where applicable):**
- Non-Structural Wall
 - Structural Wall (no hacking allowed)
 - Services Void Space (excluded from strata area)
 - * - Mirror Image
 - F - Fridge
 - IH - Induction Hob
 - ST - Storage
 - W - Washer
 - GH - Gas Hob
 - DB - Distribution Board
 - WC - Water Closet
 - HS - Household Shelter
 - CO - Convection Oven

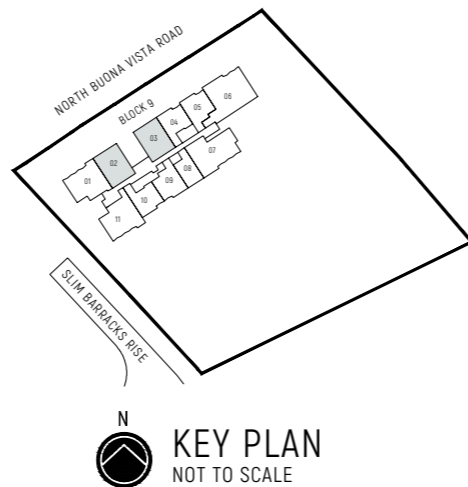
The balcony shall not be enclosed. Only approved balcony screens are to be used. For illustration of the approved balcony screen, please refer to diagram annexed hereto as "Annexure A". All plans are subjected to amendments as may be approved by the relevant authorities. Floor areas are approximate measurements and are subjected to final survey. All RC Ledge (Reinforced Concrete Ledge) are excluded from strata area. BP Approval No. A1720-00020-2021-BP02 dated 17/03/2023



3 - BEDROOM DUAL-KEY

TYPE C3
85 sq m / 915 sq ft

BLOCK 9
UNIT
#03-02 TO #26-02
#03-03* TO #26-03*



0 1 3 5M

LEGEND (where applicable):

- Non-Structural Wall
- Structural Wall (no hacking allowed)
- ⊠ Services Void Space (excluded from strata area)
- F - Fridge
- IH - Induction Hob
- GH - Gas Hob
- CO - Convection Oven
- W - Washer
- ST - Storage
- DB - Distribution Board
- WC - Water Closet
- HS - Household Shelter

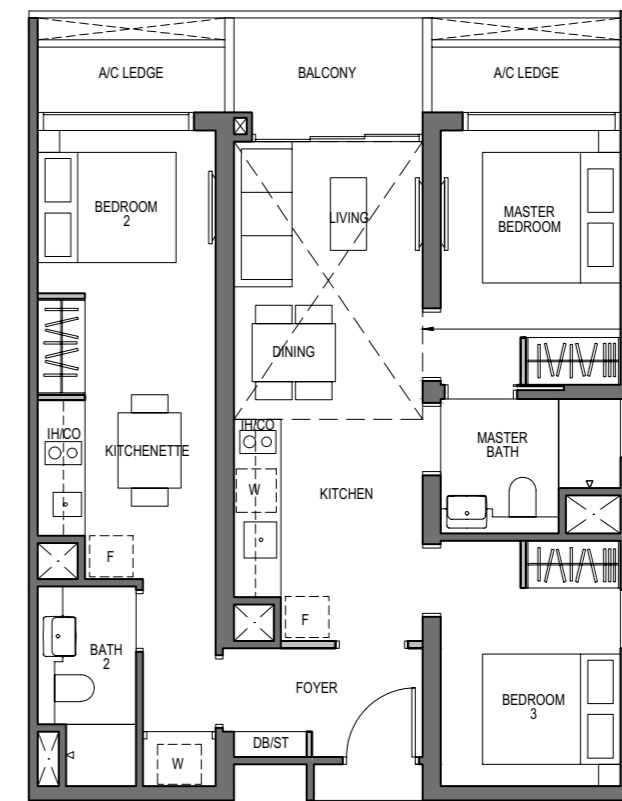
* - Mirror Image

The balcony shall not be enclosed. Only approved balcony screens are to be used. For illustration of the approved balcony screen, please refer to diagram annexed hereto as "Annexure A". All plans are subjected to amendments as may be approved by the relevant authorities. Floor areas are approximate measurements and are subjected to final survey. All RC Ledge (Reinforced Concrete Ledge) are excluded from strata area. BP Approval No. A1720-00020-2021-BP02 dated 17/03/2023

3 - BEDROOM DUAL-KEY

TYPE C3-PH
96 sq m / 1033 sq ft
[inclusive of 11 sq m / 118 sq ft of void area (high ceiling)]

BLOCK 9
UNIT
#27-02
#27-03*



Dotted Line denotes Strata Void Area for Type C3-PH which is part of the Strata Void

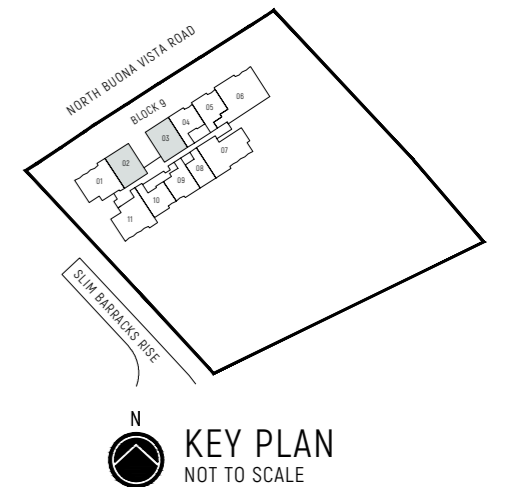
0 1 3 5M

LEGEND (where applicable):

- Non-Structural Wall
- Structural Wall (no hacking allowed)
- ⊠ Services Void Space (excluded from strata area)
- F - Fridge
- IH - Induction Hob
- GH - Gas Hob
- CO - Convection Oven
- W - Washer
- ST - Storage
- DB - Distribution Board
- WC - Water Closet
- HS - Household Shelter

* - Mirror Image

The balcony shall not be enclosed. Only approved balcony screens are to be used. For illustration of the approved balcony screen, please refer to diagram annexed hereto as "Annexure A". All plans are subjected to amendments as may be approved by the relevant authorities. Floor areas are approximate measurements and are subjected to final survey. All RC Ledge (Reinforced Concrete Ledge) are excluded from strata area. BP Approval No. A1720-00020-2021-BP02 dated 17/03/2023



4 - BEDROOM

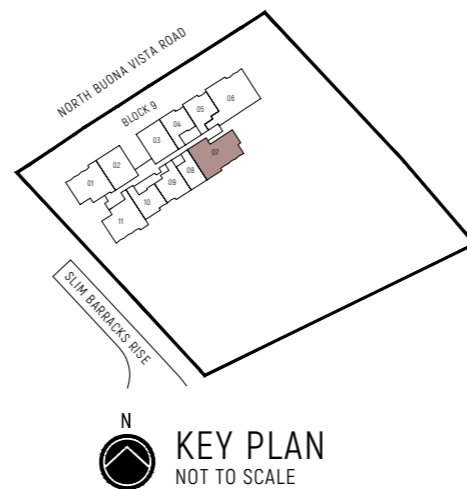
TYPE D1

121 sq m / 1302 sq ft

BLOCK 9

UNIT

#03-07 TO #26-07



0 1 3 5M

LEGEND (where applicable):

- Non-Structural Wall
- Structural Wall (no hacking allowed)
- ⊠ Services Void Space (excluded from strata area)
- * - Mirror Image
- F - Fridge
- IH - Induction Hob
- ST - Storage
- W - Washer
- GH - Gas Hob
- DB - Distribution Board
- HS - Household Shelter
- CO - Convection Oven
- WC - Water Closet

The balcony shall not be enclosed. Only approved balcony screens are to be used. For illustration of the approved balcony screen, please refer to diagram annexed hereto as "Annexure A". All plans are subjected to amendments as may be approved by the relevant authorities. Floor areas are approximate measurements and are subjected to final survey. All RC Ledge (Reinforced Concrete Ledge) are excluded from strata area. BP Approval No. A1720-00020-2021-BP02 dated 17/03/2023

4 - BEDROOM

TYPE D1-PH

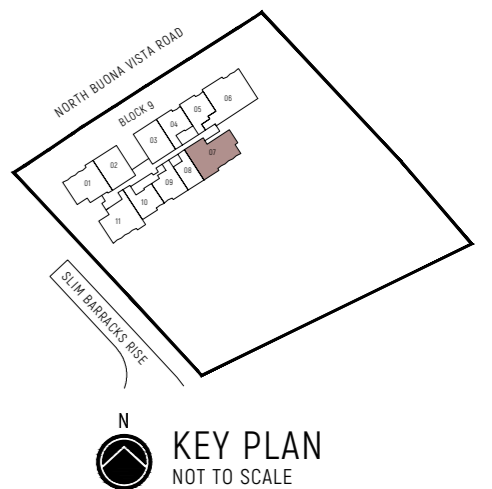
143 sq m / 1539 sq ft
[inclusive of 22 sq m / 237 sq ft of void area (high ceiling)]

BLOCK 9

UNIT

#27-07

Dotted Line denotes Strata Void Area for Type D1-PH which is part of the Strata Void



0 1 3 5M

LEGEND (where applicable):

- Non-Structural Wall
- Structural Wall (no hacking allowed)
- ⊠ Services Void Space (excluded from strata area)
- * - Mirror Image
- F - Fridge
- IH - Induction Hob
- ST - Storage
- W - Washer
- GH - Gas Hob
- DB - Distribution Board
- HS - Household Shelter
- CO - Convection Oven
- WC - Water Closet

The balcony shall not be enclosed. Only approved balcony screens are to be used. For illustration of the approved balcony screen, please refer to diagram annexed hereto as "Annexure A". All plans are subjected to amendments as may be approved by the relevant authorities. Floor areas are approximate measurements and are subjected to final survey. All RC Ledge (Reinforced Concrete Ledge) are excluded from strata area. BP Approval No. A1720-00020-2021-BP02 dated 17/03/2023

4 - BEDROOM PREMIUM

TYPE D2

140 sq m / 1507 sq ft

BLOCK 9

UNIT

#03-06 TO #26-06

4 - BEDROOM PREMIUM

TYPE D2-PH

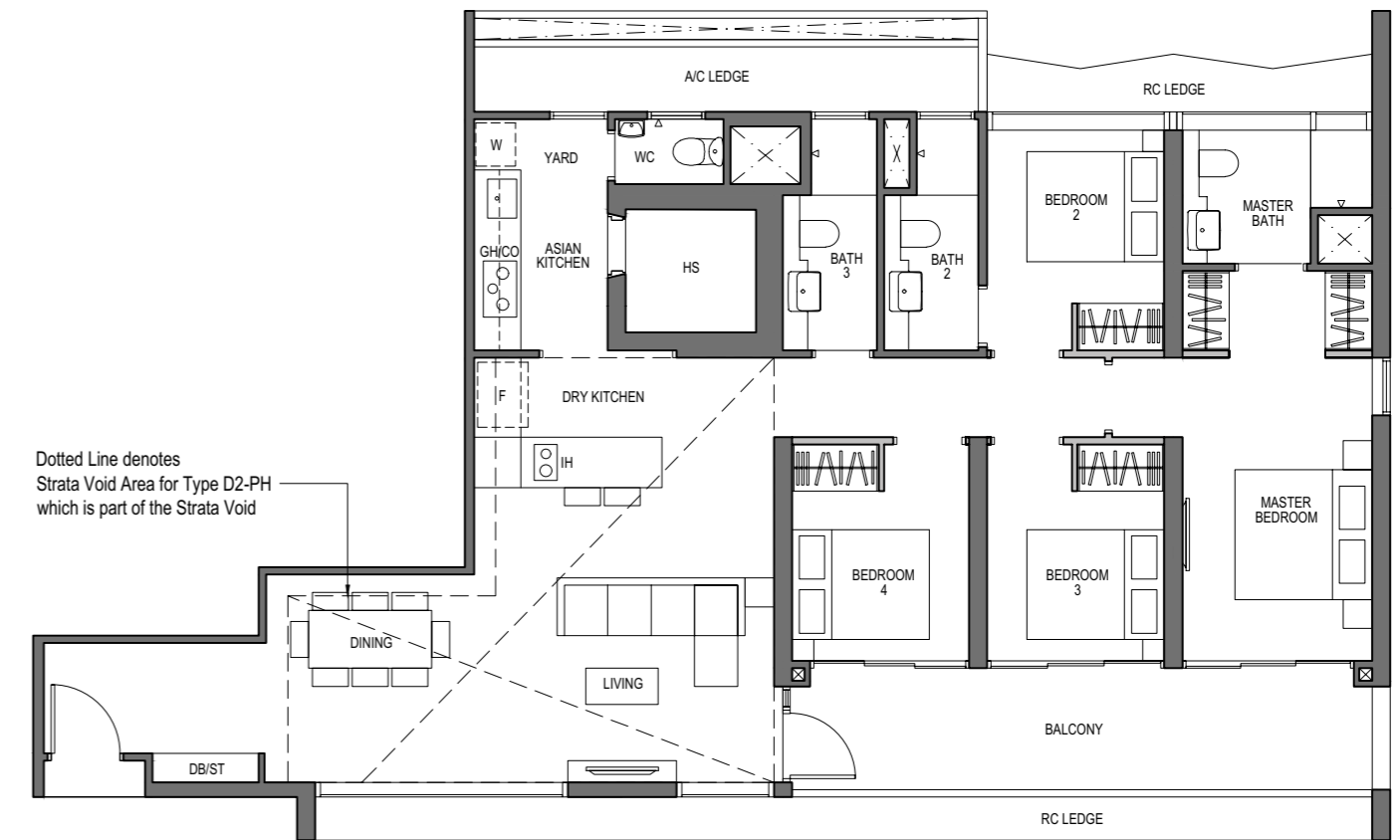
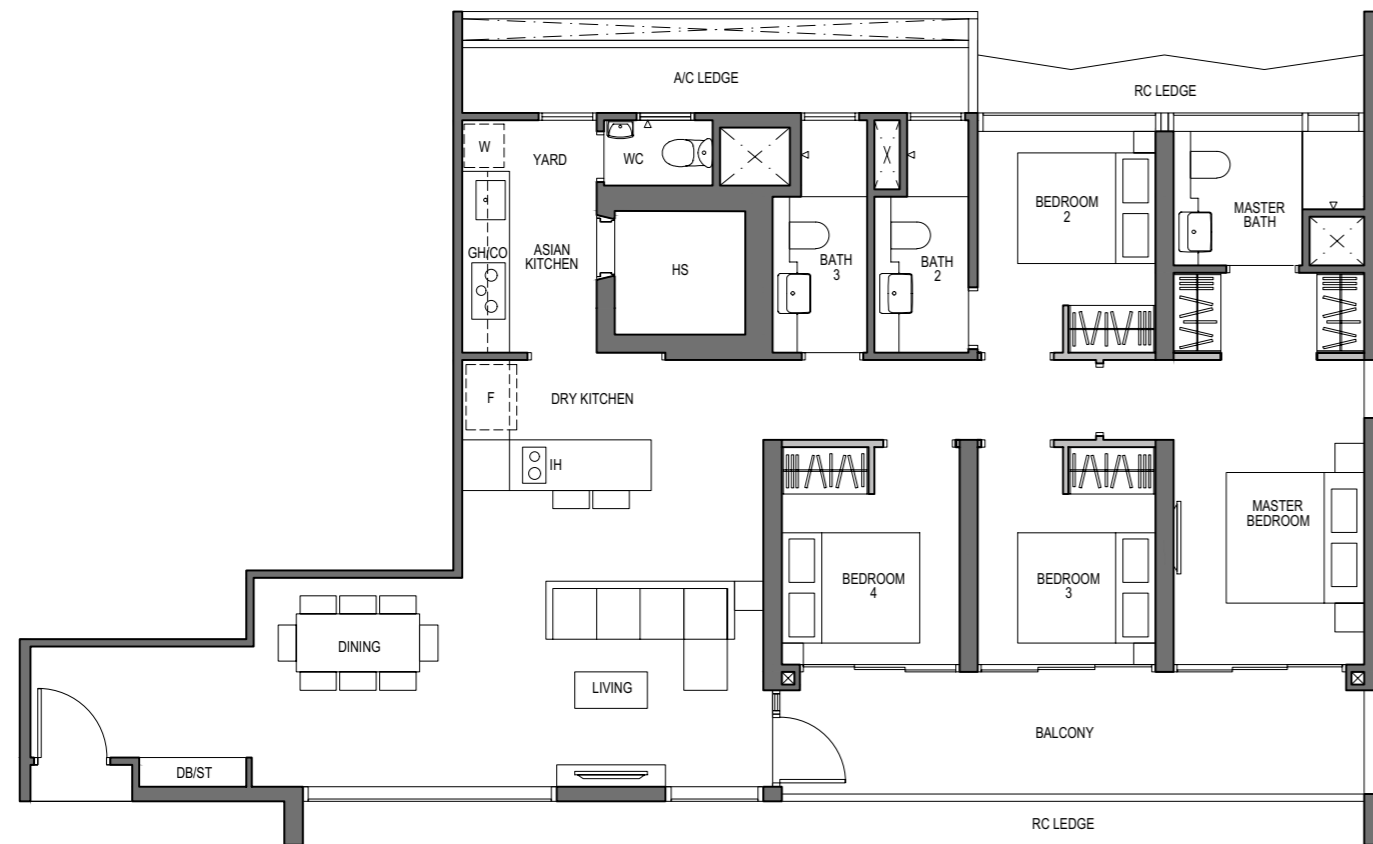
175 sq m / 1884 sq ft

[inclusive of 35 sq m / 377 sq ft of void area (high ceiling)]

BLOCK 9

UNIT

#27-06



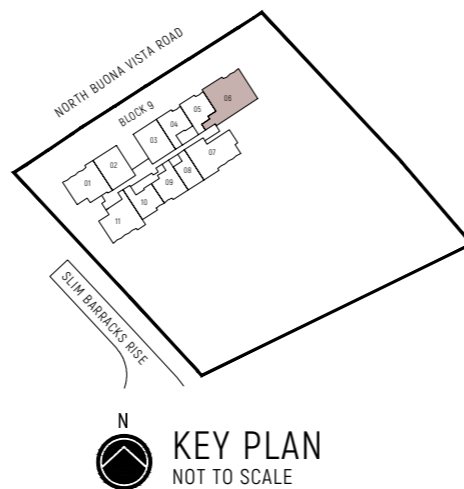
Dotted Line denotes Strata Void Area for Type D2-PH which is part of the Strata Void

0 1 3 5M

LEGEND (where applicable):

- Non-Structural Wall
- Structural Wall (no hacking allowed)
- ⊠ Services Void Space (excluded from strata area)
- F - Fridge
- IH - Induction Hob
- ST - Storage
- W - Washer
- GH - Gas Hob
- DB - Distribution Board
- HS - Household Shelter
- CO - Convection Oven
- WC - Water Closet

* - Mirror Image



The balcony shall not be enclosed. Only approved balcony screens are to be used. For illustration of the approved balcony screen, please refer to diagram annexed hereto as "Annexure A". All plans are subjected to amendments as may be approved by the relevant authorities. Floor areas are approximate measurements and are subjected to final survey.

All RC Ledge (Reinforced Concrete Ledge) are excluded from strata area.

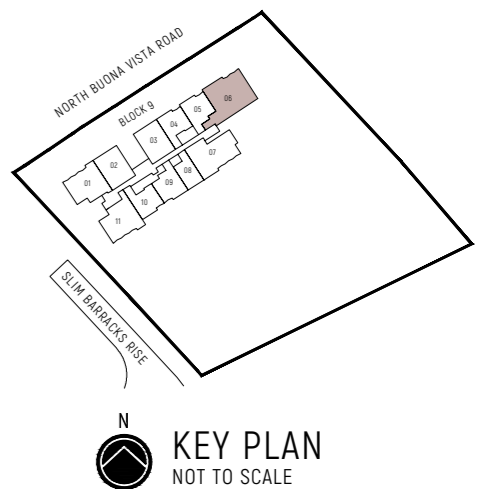
BP Approval No. A1720-00020-2021-BP02 dated 17/03/2023

0 1 3 5M

LEGEND (where applicable):

- Non-Structural Wall
- Structural Wall (no hacking allowed)
- ⊠ Services Void Space (excluded from strata area)
- F - Fridge
- IH - Induction Hob
- ST - Storage
- W - Washer
- GH - Gas Hob
- DB - Distribution Board
- HS - Household Shelter
- CO - Convection Oven
- WC - Water Closet

* - Mirror Image

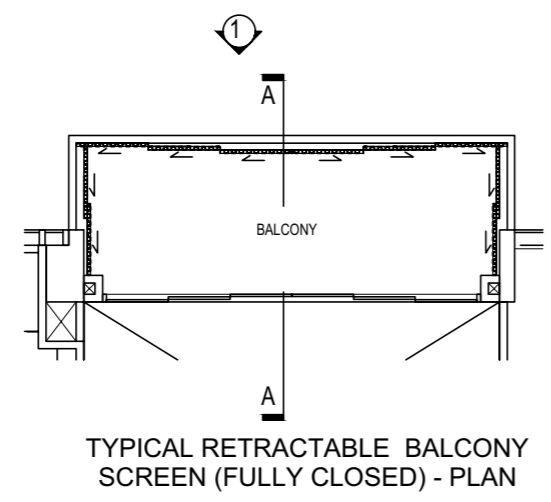


The balcony shall not be enclosed. Only approved balcony screens are to be used. For illustration of the approved balcony screen, please refer to diagram annexed hereto as "Annexure A". All plans are subjected to amendments as may be approved by the relevant authorities. Floor areas are approximate measurements and are subjected to final survey.

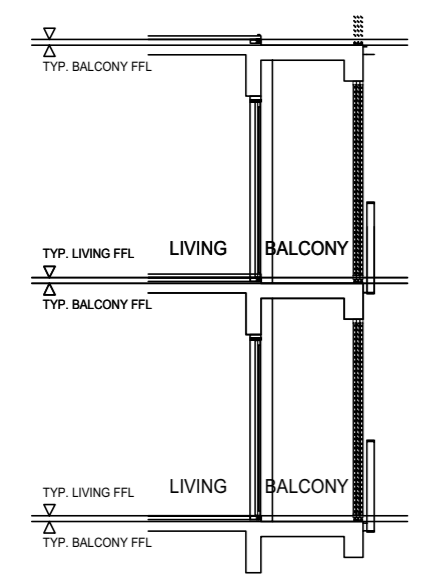
All RC Ledge (Reinforced Concrete Ledge) are excluded from strata area.

BP Approval No. A1720-00020-2021-BP02 dated 17/03/2023

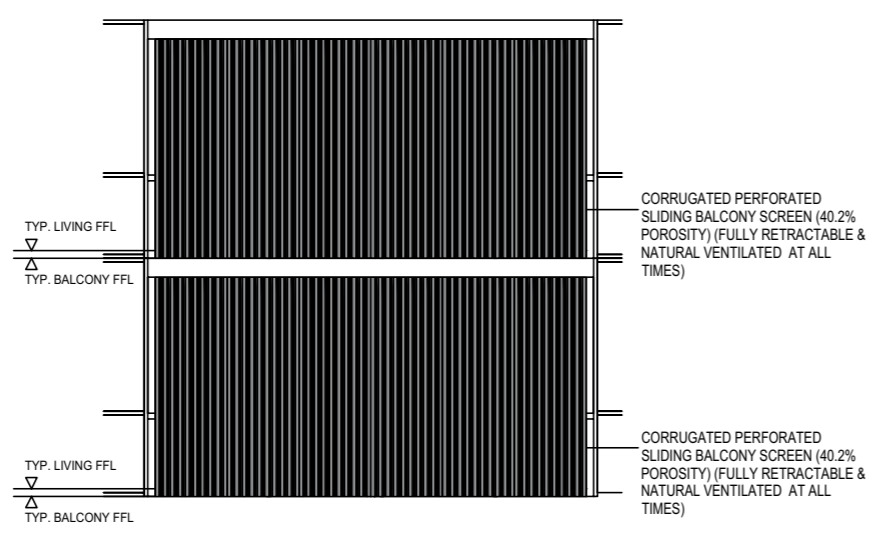
ANNEXURE A



TYPICAL RETRACTABLE BALCONY SCREEN (FULLY CLOSED) - PLAN



TYPICAL RETRACTABLE BALCONY SCREEN - SECTION AA



TYPICAL RETRACTABLE BALCONY SCREEN (CLOSED) - ELEVATION 1



SkySuites 17



La Fiesta



Parc Riviera



Symphony Suites

Note:
 The balcony screen shall be not enclosed unless with the approved balcony screen as shown above.
 The cost of screen and installation shall be borne by the Purchaser.
 The design of the Balcony Screen is displayed at the Sales Gallery.

EL Development Pte Ltd first started as a business unit within one of Singapore's leading builders, Evan Lim & Co. Pte Ltd, before its inception as a separate company in June 2007. The company has developed more than 3,000 homes in Singapore, including Illuminaire on Devonshire, Parc Centennial in Kampong Java Road, Symphony Suites in Yishun and Parc Riviera in West Coast Vale.

In late 2021, the company embarked on its first hotel development – the first Pullman Hotel in Singapore, managed by Accor. Located at Hill Street, this luxurious 10-storey business hotel comprises 350 rooms with outstanding facilities.

In recognition of its emphasis on quality, design and sustainability, EL Development has won prestigious awards such as FIABCI World Prix d'Excellence Awards (2020 & 2021), FIABCI Singapore Property Awards (2018 & 2019), Asia Pacific Property Awards (2018 - 2019 & 2021 - 2022), Asia Property Awards Singapore (2017 & 2020), BCI Asia Top Ten Developers Award (2016, 2017 & 2020), BCA Green Mark Award (2016 & 2018), BCA Quality Mark Excellent Award 2019 & 2021, EdgeProp Excellence Awards 2020, SME One Asia Awards (2013) and Enterprise 50 Awards (2012).



BLOSSOMS

by the Park

博盛苑

FOR ENQUIRIES CALL 8189 1690

www.blossoms.com.sg

Developer: EL Development (Buona Vista) Pte. Ltd. (UEN 202135422N), EL Development (One-North) Pte. Ltd. (UEN 202135415N) - Sales Licence No.: C1444 - Tenure of Land: Leasehold estate of 99 years commencing from 10 Jan 2022 - Encumbrances: Caveat(s)/Mortgage(s) in favour of United Overseas Bank Limited - Expected Date of Vacant Possession: 31 Dec 2027 - Expected Date of Legal Completion: 31 Dec 2030 - Location: Lot 05582V of Mukim 03 at Slim Barracks Rise - BP Approval No. A1720-00020-2021-BP02 dated 17/03/2023

While every reasonable care has been taken in preparing this brochure and in constructing the models and showflat, the Developer and Marketing Agents cannot be held responsible for inaccuracies or omissions. Visual Representations, models, showflat display, illustrations, photographs, art renderings and other graphic representations and references are intended to portray only artist's impressions of the development and cannot be regarded as representations of fact.

All information, specifications, renderings, visual representations and plans are correct at the time of publication and are subject to changes as may be required by us and/or the competent authorities and shall not form part of any offer or contract nor constitute any warranty by us and shall not be regarded as statements or representations of fact. All facts are subject to amendments as directed and/or approved by the building authorities. All areas are approximate measurements only and subject to Final Survey. The Sale and Purchase Agreement shall form the entire agreement between us as the Developer and the Purchaser and shall supersede all statements, representations or promises made prior to the signing of the Sale & Purchase Agreement and shall in no way be modified by any statements, representations or promises made by us or the Marketing Agents.

