





LEGEND:

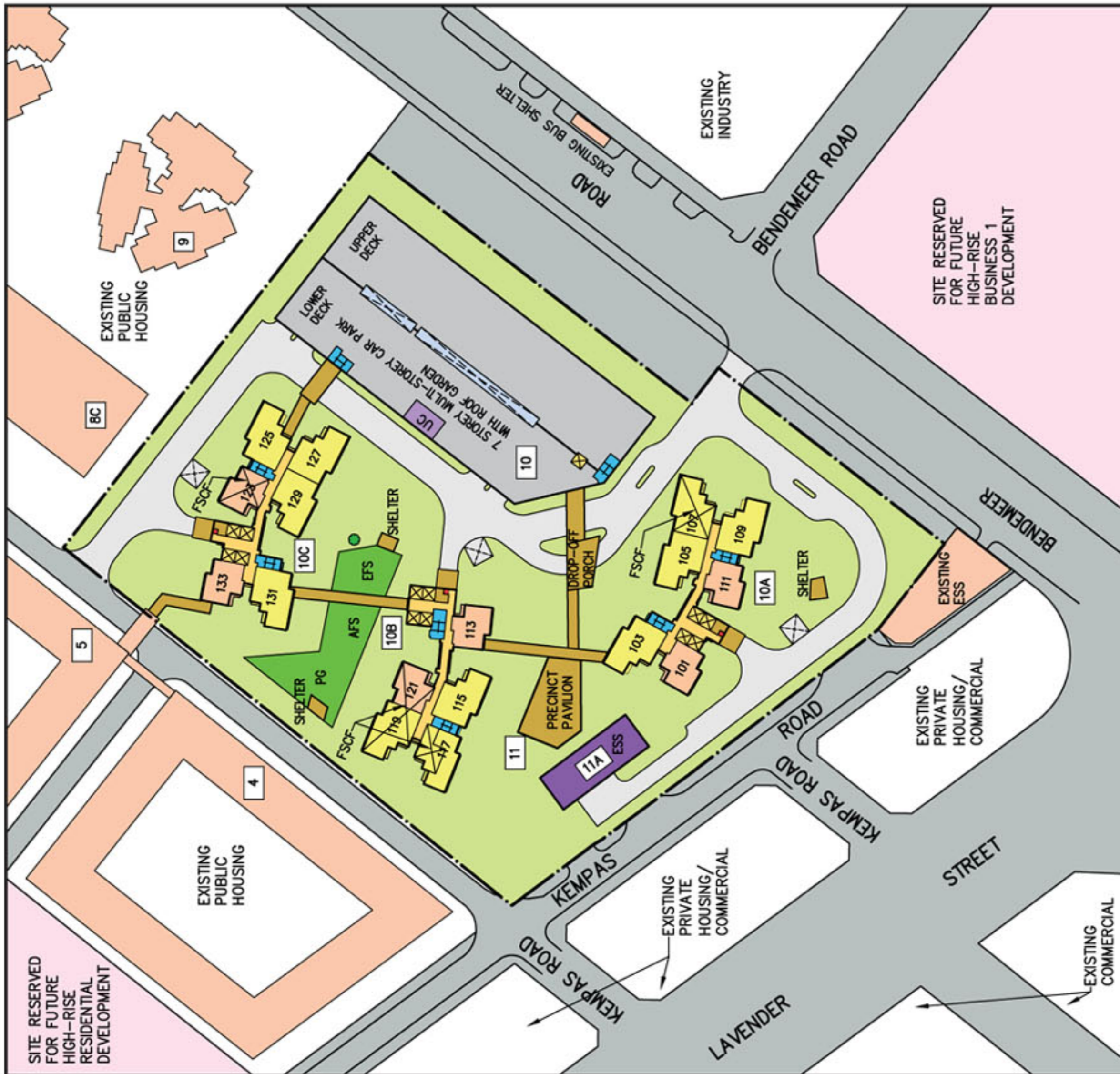
-  MRT Line & Station
-  MRT Line & Station (u/c)
- (u/c) Under Construction



LEGEND

- 3 - Room
- 4 - Room
- Surrounding Buildings
- Reserved for / Existing Development
- Linkway / Precinct Pavilion / Drop-off Porch / Shelter
- Children Playground (PG) / Adult Fitness Station (AFS) / Elderly Fitness Station (EFS)
- Future Social Communal Facility (FSCF)
- Electrical Sub-Station (ESS)
- Utility Centre (UC) at 1st. Storey
- Multi-Storey Carpark
- Air-well
- Open Space
- Staircase
- Driveway
- Centralised Refuse Chute
- Corridor
- Lift
- Service Bay
- Existing Tree

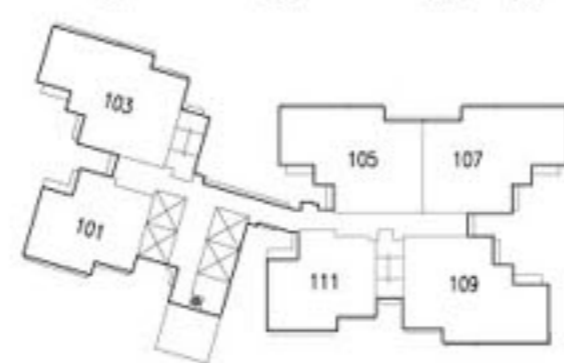
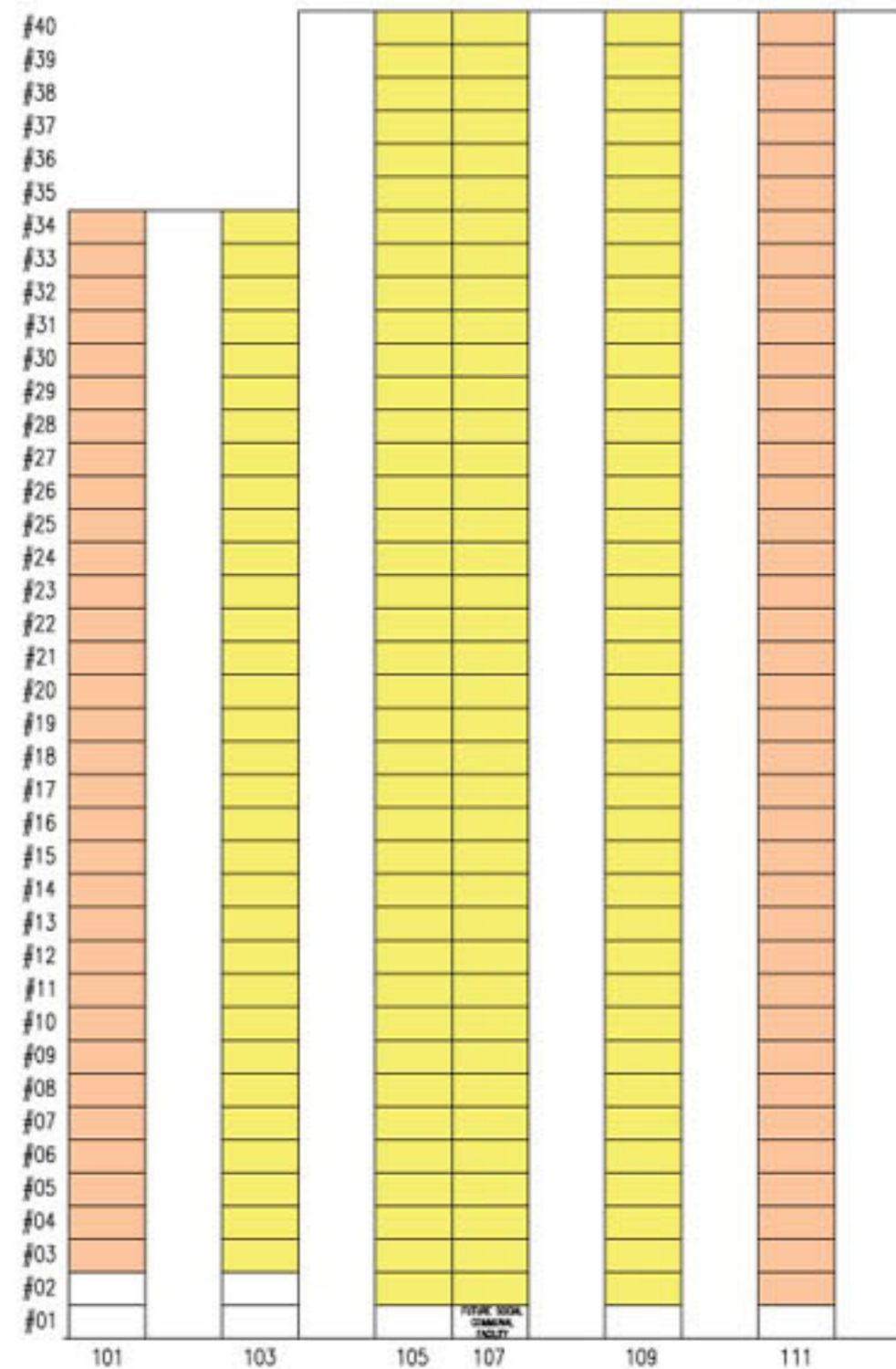
Block Number	Number of storeys	3 Room	4 Room	Total	Lift opens at
10A	34/40	71	149	220	Every storey
10B	34/40	70	114	184	Every storey
10C	34/40	71	149	220	Every storey
Total		212	412	624	



BENDEMEER LIGHT
Standard Flats
KWN C50A

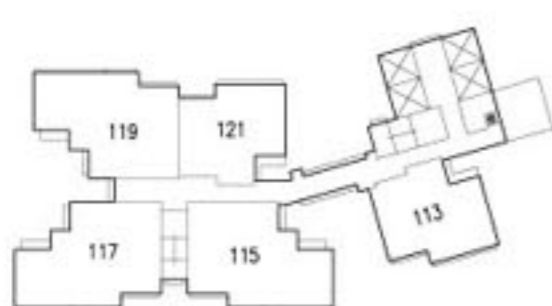
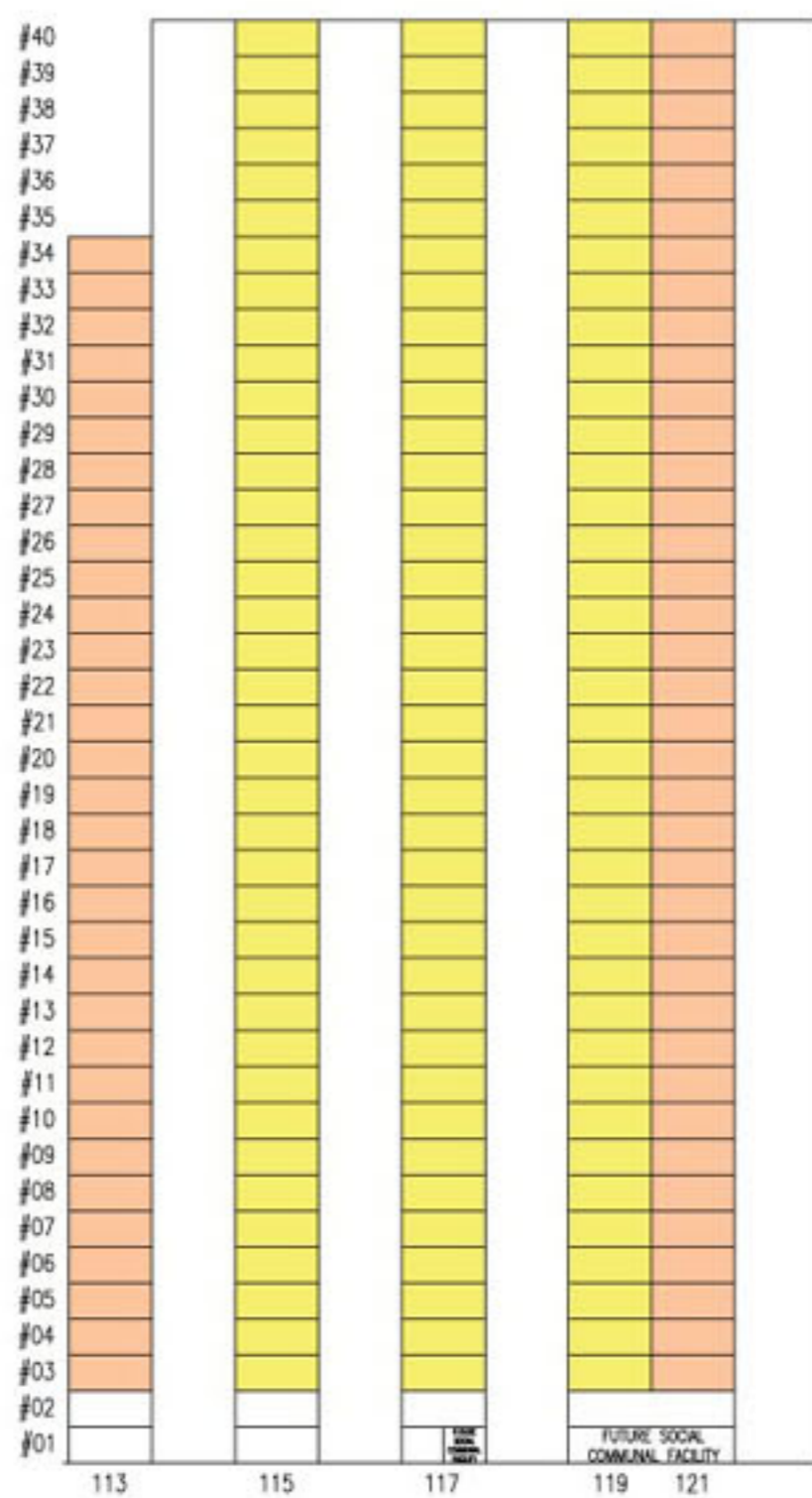
Applicants are encouraged to visit the place before booking a flat.

Unit Distributions



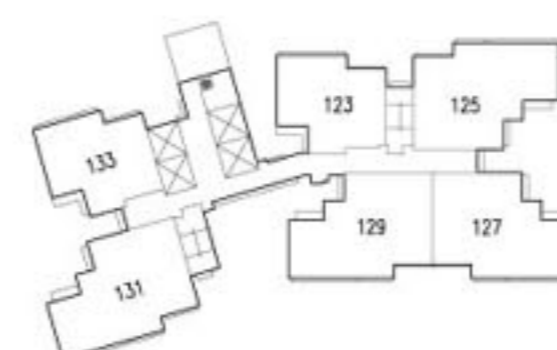
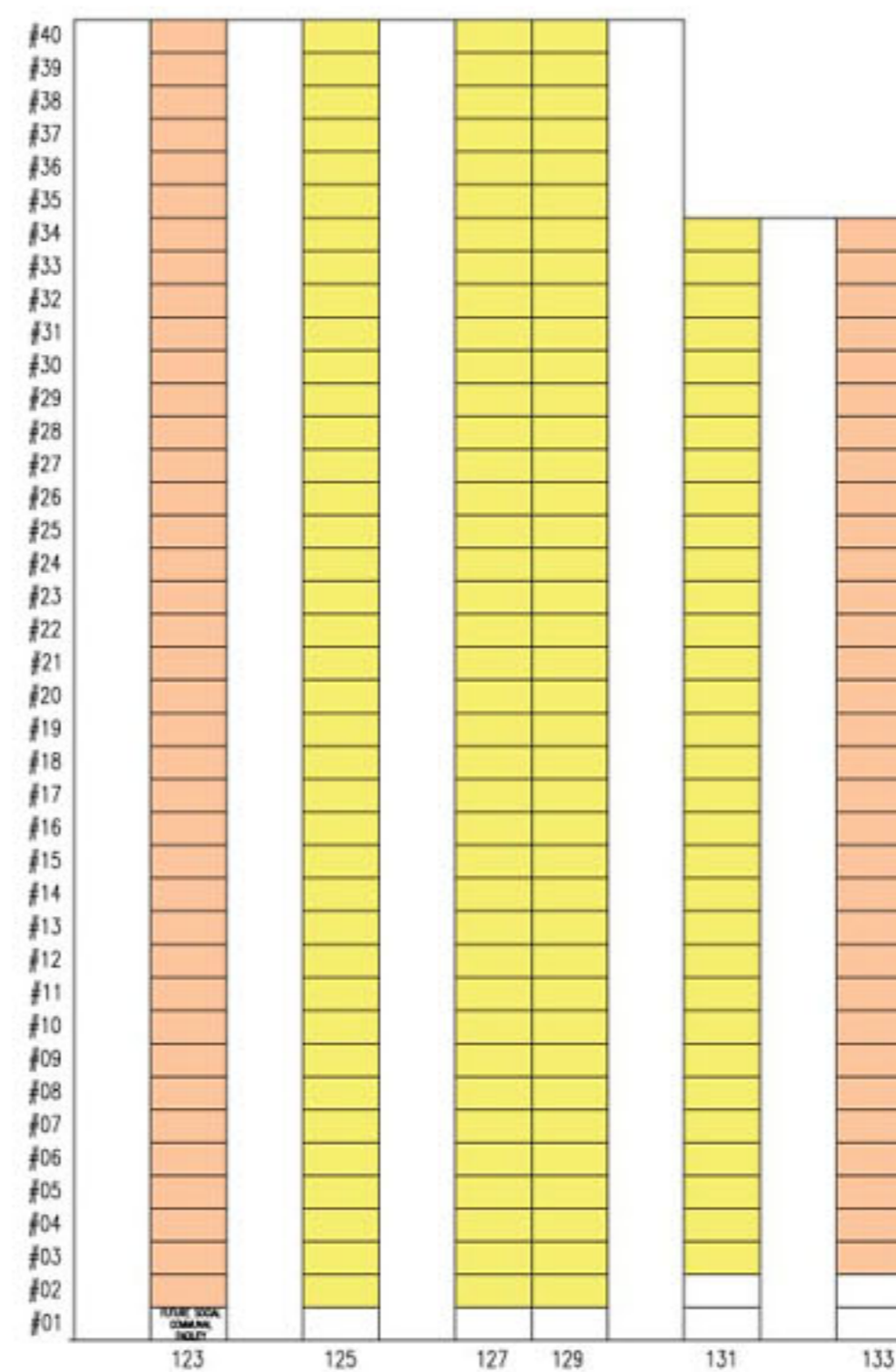
BLOCK 10A

- 3 ROOM
- 4 ROOM



BLOCK 10B

- 3 ROOM
- 4 ROOM



BLOCK 10C

- 3 ROOM
- 4 ROOM

GENERAL SPECIFICATIONS FOR BENDEMEER LIGHT

Foundation

Piled foundations.

Structure

Reinforced concrete structural framework with reinforced concrete slabs.

Roof

Reinforced concrete roof slab with precast concrete secondary roofing.

Walls

All external and internal walls are constructed with reinforced concrete/solid blocks/bricks with cement plastering/ precast panels/precast lightweight concrete partitions.

Windows

Aluminium framed windows with tinted glass.

Doors

Entrance	: decorative solid timber door and metal gate
Bedrooms	: laminated semi-solid timber door (Type D9a) (optional)
Bathrooms/WC	: laminated semi-solid timber door (Type D9a) (optional)
Household Shelter	: metal door
Service Yard	: aluminium framed door with glass

Finishes

Ceiling	: skim-coated or plastered and painted
Kitchen/Bathrooms/WC Wall	: ceramic tiles
Other Walls	: skim-coated or plastered and painted
Living/Dining/Bedrooms Floor	: polished porcelain tiles with timber skirting (optional)
Kitchen/Bathrooms/WC Floor	: ceramic tiles
Service Yard Floor	: ceramic tiles with tile skirting
Household Shelter Floor	: ceramic tiles

Fittings

Quality locksets.
 Quality sanitary fittings.
 Clothes drying rack.
 Wash Basin for Bath/WC for 3-Room and 4-Room.

Services

Gas services and concealed water supply pipes.
 Concealed electrical wiring to lighting and power points (including water heater and air-conditioning points).
 Television points.
 Telephone points.

Important Notes:

- 1) The Household Shelter is designed for use as civil defence shelter. The walls, ceiling, floor and door of the Household Shelter shall not be hacked, drilled, altered or removed.
- 2) Air-con panel in the main bedroom will be not provided.
- 3) Any unused or unoccupied open spaces in front of or nearby / adjacent to the flat units are not available for purchase and that the HDB will not entertain any requests from the flat owners to purchase and / or enclose the unused or unoccupied open spaces.

You are advised to visit HDB's website at www.hdb.gov.sg for information on renovations rules.