

Waterway **V I E W**



Moments to remember



BUILD-TO-ORDER SEP 2013



Waterfront Living



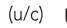
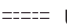

Waterway View is bounded by Edgedale Plains, My Waterway@Punggol and a water tributary. The development comprises 1,057 units of 3-, 4- and 5-room Premium flats housed in 10 residential blocks ranging from 6 to 17 storeys in height.

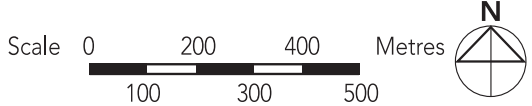
At Waterway View, you can take in scenic views of the nearby waters by heading to the many viewing decks and rest shelters located at the periphery of the development. These spaces also serve as excellent areas for rest and relaxation.





LEGEND:

-  MRT Line & Station
-  LRT Line & Station
-  (u/c) Under Construction
-  Under Construction/ Future Road
-  CG Common Green





Activity Spaces for Everyone

The open landscaped deck within Waterway View serves as a hub for both active and passive pursuits. Here, you can work up a sweat at the adult and elderly fitness corners while the young ones have fun at the children's playgrounds. Precinct pavilions and rest shelters are also provided for both large-scale and intimate gatherings.

Alternatively, you can choose to visit the rooftop garden adorning the multi-storey car park for relaxation amid lush greenery. Sky gardens can also be found atop some of the residential blocks. These are open to the public and serve as great viewing platforms.

For added convenience, a childcare centre and a Residents' Committee Centre will be provided within the development.



Eco-Friendly Living

Waterway View is designed to fulfil the vision of establishing Punggol as an Eco-Town. To support this vision, the development has numerous eco-friendly features:

- Sustainable and recycled products are used in certain parts of the development
- Separate refuse chutes are provided for recyclable wastes
- Motion sensor lights are installed at common staircases to reduce energy consumption
- A rainwater harvesting system is provided to store rainwater for washing of common areas
- Bicycle stands are provided to encourage use of these environmentally friendly forms of transport



A Welcoming Abode

Waterway View offers 3-, 4- and 5-room Premium flats. All of these units come with full height windows in the living/dining area and three-quarter height windows in the bedrooms. Some 4- and 5-room flats come with a balcony at either the living room or main bedroom.

All flats will come with floor finishes in the kitchen, household shelter, service yard and bathrooms. Wall tiles will also be provided in the bathroom and kitchen. For added convenience, you may opt in to have floor finishes installed in the living/dining room and bedrooms of your selected flat. You may also opt in to have sanitary fittings in the bathrooms - wash basin, water tap and shower mixer. These sanitary fittings, together with internal doors, will be offered as a package. The cost of installing these optional components will be added to the selling price of your flat.

To provide a sense of spaciousness and greater flexibility in furniture layout and design, units in Waterway View come with an open kitchen concept. You can carry out the necessary extensions to the electrical, water and gas points provided in the kitchen as part of your renovation plans. Alternatively, you may opt in to have a partition wall installed between the living/dining area and kitchen. The cost of this optional wall will be added to the selling price of the flat.

Open Kitchen Concept (Default)



LAYOUT IDEAS FOR 3-ROOM
APPROX. FLOOR AREA 68 sqm
(Inclusive of Internal Floor Area of 65 sqm and Air-Con Ledge)

With Kitchen Partition Wall



LAYOUT IDEAS FOR 3-ROOM
APPROX. FLOOR AREA 68 sqm
(Inclusive of Internal Floor Area of 65 sqm and Air-Con Ledge)

Open Kitchen Concept (Default)



LAYOUT IDEAS FOR 4-ROOM
APPROX. FLOOR AREA 93 sqm
(Inclusive of Internal Floor Area of 90 sqm and Air-Con Ledge)

With Kitchen Partition Wall



LAYOUT IDEAS FOR 4-ROOM
APPROX. FLOOR AREA 93 sqm
(Inclusive of Internal Floor Area of 90 sqm and Air-Con Ledge)



LAYOUT IDEAS FOR 4-ROOM
APPROX. FLOOR AREA 93 sqm
(Inclusive of Internal Floor Area of 90 sqm and Air-Con Ledge)



LAYOUT IDEAS FOR 4-ROOM
APPROX. FLOOR AREA 93 sqm
(Inclusive of Internal Floor Area of 90 sqm and Air-Con Ledge)



LAYOUT IDEAS FOR 4-ROOM
APPROX. FLOOR AREA 93 sqm
(Inclusive of Internal Floor Area of 90 sqm and Air-Con Ledge)



LAYOUT IDEAS FOR 4-ROOM
APPROX. FLOOR AREA 93 sqm
(Inclusive of Internal Floor Area of 90 sqm and Air-Con Ledge)

Open Kitchen Concept (Default)

With Kitchen Partition Wall



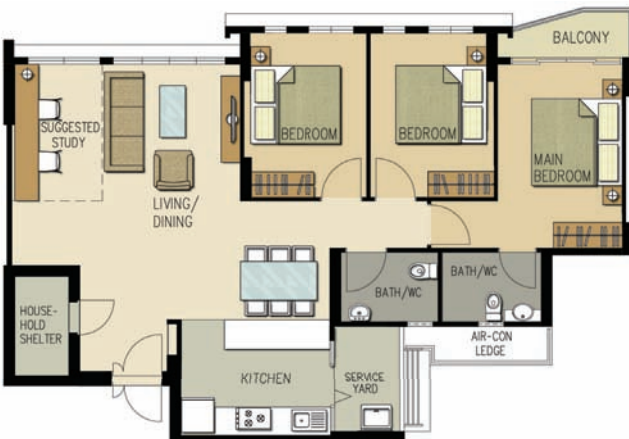
LAYOUT IDEAS FOR 5-ROOM
APPROX. FLOOR AREA 113 sqm
(Inclusive of Internal Floor Area of 110 sqm and Air-Con Ledge)

LAYOUT IDEAS FOR 5-ROOM
APPROX. FLOOR AREA 113 sqm
(Inclusive of Internal Floor Area of 110 sqm and Air-Con Ledge)



LAYOUT IDEAS FOR 5-ROOM
APPROX. FLOOR AREA 113 sqm
(Inclusive of Internal Floor Area of 110 sqm and Air-Con Ledge)

LAYOUT IDEAS FOR 5-ROOM
APPROX. FLOOR AREA 113 sqm
(Inclusive of Internal Floor Area of 110 sqm and Air-Con Ledge)



LAYOUT IDEAS FOR 5-ROOM
APPROX. FLOOR AREA 113 sqm
(Inclusive of Internal Floor Area of 110 sqm and Air-Con Ledge)

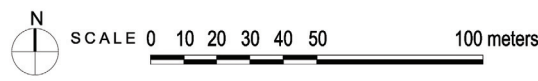
LAYOUT IDEAS FOR 5-ROOM
APPROX. FLOOR AREA 113 sqm
(Inclusive of Internal Floor Area of 110 sqm and Air-Con Ledge)



LEGEND

- 3-Room
 - 4-Room
 - 5-Room
 - Surrounding Buildings
 - Trellis / Pergola
 - Linkway / Precinct Pavilion/ Drop-off Porch/ Shelter
 - Linkbridge at 9th Storey
 - Future Social Community Facilities (FSCF) / Residents' Committee Centre (RCC) / Child Care Centre (CCC) at 1st Storey
 - Reserved for / Existing Development
 - Children Playground (PG) / Adult Fitness Station (AFS) / Elderly Fitness Station (EFS) at 1st Storey
 - Open Space at 1st Storey
 - Open Space
 - Utility Centre (UC) at 1st Storey
 - Electrical Sub-Station (ESS) at 1st Storey
 - Airwell
 - Staircase
 - Embankment
 - Ramp
 - Multi-storey Carpark
 - Driveway
 - Centralised Refuse Chute / Chute for Recyclable Refuse
 - Corridor
 - Lift
 - Service Bay
- (U/C) Under Construction

BLOCK NUMBER	NUMBER OF STOREYS	3 ROOM	4 ROOM	5 ROOM	TOTAL	LIFT OPENS AT
682A	17	31	64	32	127	EVERY STOREY
682B	17	-	48	32	80	EVERY STOREY
682C	17	32	32	32	96	EVERY STOREY
683A	17	63	64	-	127	EVERY STOREY
683B	6/17	32	44	-	76	EVERY STOREY
683C	6/15	-	40	40	80	EVERY STOREY
684A	9/17	-	64	64	128	EVERY STOREY
684B	8/17	-	32	83	115	EVERY STOREY
684C	8/17	32	62	48	142	EVERY STOREY
684D	6/17	-	76	10	86	EVERY STOREY
TOTAL		190	526	341	1057	EVERY STOREY



Applicants are encouraged to visit the place before booking a flat. Premium Flats



LEGEND:

- 3 ROOM
- 4 ROOM
- 5 ROOM

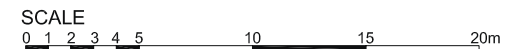
WINDOW LEGEND :

- W1 - FULL HEIGHT WINDOW (APPROX. 300 mm HIGH PARAPET WALL)
- W2 - THREE QUARTER HEIGHT WINDOW (APPROX. 500mm HIGH PARAPET WALL)

UNLESS OTHERWISE INDICATED, ALL WINDOWS WILL BE STANDARD HEIGHT WINDOWS.

BLOCK 682A
(2ND,3RD & 13TH STOREY PLAN)

The coloured floor plan is not intended to demarcate the boundary of the flat.





LEGEND:

- 3 ROOM
- 4 ROOM
- 5 ROOM

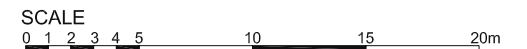
WINDOW LEGEND :

- W1 - FULL HEIGHT WINDOW (APPROX. 300 mm HIGH PARAPET WALL)
- W2 - THREE QUARTER HEIGHT WINDOW (APPROX. 500mm HIGH PARAPET WALL)

UNLESS OTHERWISE INDICATED, ALL WINDOWS WILL BE STANDARD HEIGHT WINDOWS.

BLOCK 682A
(4TH,5TH,10TH TO 12TH STOREY PLAN)

The coloured floor plan is not intended to demarcate the boundary of the flat.





- LEGEND:**
- 3 ROOM
 - 4 ROOM
 - 5 ROOM

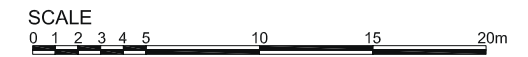
WINDOW LEGEND :
 W1 - FULL HEIGHT WINDOW (APPROX. 300 mm HIGH PARAPET WALL)
 W2 - THREE QUARTER HEIGHT WINDOW (APPROX. 500mm HIGH PARAPET WALL)

UNLESS OTHERWISE INDICATED, ALL WINDOWS WILL BE STANDARD HEIGHT WINDOWS.

BLOCK 682A

(6TH TO 8TH, 14TH & 15TH STOREY PLAN)

The coloured floor plan is not intended to demarcate the boundary of the flat.





- LEGEND:**
- 3 ROOM
 - 4 ROOM
 - 5 ROOM

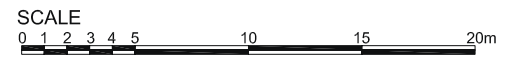
WINDOW LEGEND :

W1 - FULL HEIGHT WINDOW (APPROX. 300 mm HIGH PARAPET WALL)
 W2 - THREE QUARTER HEIGHT WINDOW (APPROX. 500mm HIGH PARAPET WALL)

UNLESS OTHERWISE INDICATED, ALL WINDOWS WILL BE STANDARD HEIGHT WINDOWS.

BLOCK 682A
 (9TH STOREY PLAN)

The coloured floor plan is not intended to demarcate the boundary of the flat.





LEGEND:

- 3 ROOM
- 4 ROOM
- 5 ROOM

WINDOW LEGEND :

- W1 - FULL HEIGHT WINDOW (APPROX. 300 mm HIGH PARAPET WALL)
- W2 - THREE QUARTER HEIGHT WINDOW (APPROX. 500mm HIGH PARAPET WALL)

UNLESS OTHERWISE INDICATED, ALL WINDOWS WILL BE STANDARD HEIGHT WINDOWS.

BLOCK 682A
(16TH & 17TH STOREY PLAN)

The coloured floor plan is not intended to demarcate the boundary of the flat.





LEGEND:

- 4 ROOM
- 5 ROOM

WINDOW LEGEND :

- W1 - FULL HEIGHT WINDOW (APPROX. 300 mm HIGH PARAPET WALL)
- W2 - THREE QUARTER HEIGHT WINDOW (APPROX. 500mm HIGH PARAPET WALL)

UNLESS OTHERWISE INDICATED, ALL WINDOWS WILL BE STANDARD HEIGHT WINDOWS.

BLOCK 682B
(4TH, 5TH, 10TH TO 12TH STOREY PLAN)

The coloured floor plan is not intended to demarcate the boundary of the flat.





LEGEND:

- 4 ROOM
- 5 ROOM

WINDOW LEGEND :

- W1 - FULL HEIGHT WINDOW (APPROX. 300 mm HIGH PARAPET WALL)
- W2 - THREE QUARTER HEIGHT WINDOW (APPROX. 500mm HIGH PARAPET WALL)

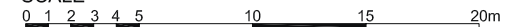
UNLESS OTHERWISE INDICATED, ALL WINDOWS WILL BE STANDARD HEIGHT WINDOWS.

BLOCK 682B

(6TH TO 8TH,14TH & 15TH STOREY PLAN)

The coloured floor plan is not intended to demarcate the boundary of the flat.

SCALE





LEGEND:

4 ROOM

5 ROOM

WINDOW LEGEND :

W1 - FULL HEIGHT WINDOW (APPROX. 300 mm HIGH PARAPET WALL)

W2 - THREE QUARTER HEIGHT WINDOW (APPROX. 500mm HIGH PARAPET WALL)

UNLESS OTHERWISE INDICATED, ALL WINDOWS WILL BE STANDARD HEIGHT WINDOWS.

BLOCK 682B
(16TH & 17TH STOREY PLAN)

The coloured floor plan is not intended to demarcate the boundary of the flat.





LEGEND:

- 3 ROOM
- 4 ROOM
- 5 ROOM

WINDOW LEGEND :

- W1 - FULL HEIGHT WINDOW (APPROX. 300 mm HIGH PARAPET WALL)
- W2 - THREE QUARTER HEIGHT WINDOW (APPROX. 500mm HIGH PARAPET WALL)

UNLESS OTHERWISE INDICATED, ALL WINDOWS WILL BE STANDARD HEIGHT WINDOWS.

BLOCK 682C
(2ND,3RD,9TH & 13TH STOREY PLAN)

The coloured floor plan is not intended to demarcate the boundary of the flat.





LEGEND:

- 3 ROOM
- 4 ROOM
- 5 ROOM

WINDOW LEGEND :

- W1 - FULL HEIGHT WINDOW (APPROX. 300 mm HIGH PARAPET WALL)
- W2 - THREE QUARTER HEIGHT WINDOW (APPROX. 500mm HIGH PARAPET WALL)

UNLESS OTHERWISE INDICATED, ALL WINDOWS WILL BE STANDARD HEIGHT WINDOWS.

BLOCK 682C
(4TH,5TH,10TH TO 12TH STOREY PLAN)

The coloured floor plan is not intended to demarcate the boundary of the flat.





LEGEND:

- 3 ROOM
- 4 ROOM
- 5 ROOM

WINDOW LEGEND :

- W1 - FULL HEIGHT WINDOW (APPROX. 300 mm HIGH PARAPET WALL)
- W2 - THREE QUARTER HEIGHT WINDOW (APPROX. 500mm HIGH PARAPET WALL)

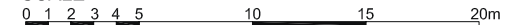
UNLESS OTHERWISE INDICATED, ALL WINDOWS WILL BE STANDARD HEIGHT WINDOWS.

BLOCK 682C

(6TH TO 8TH, 14TH & 15TH STOREY PLAN)

The coloured floor plan is not intended to demarcate the boundary of the flat.

SCALE





LEGEND:

- 3 ROOM
- 4 ROOM
- 5 ROOM

WINDOW LEGEND :

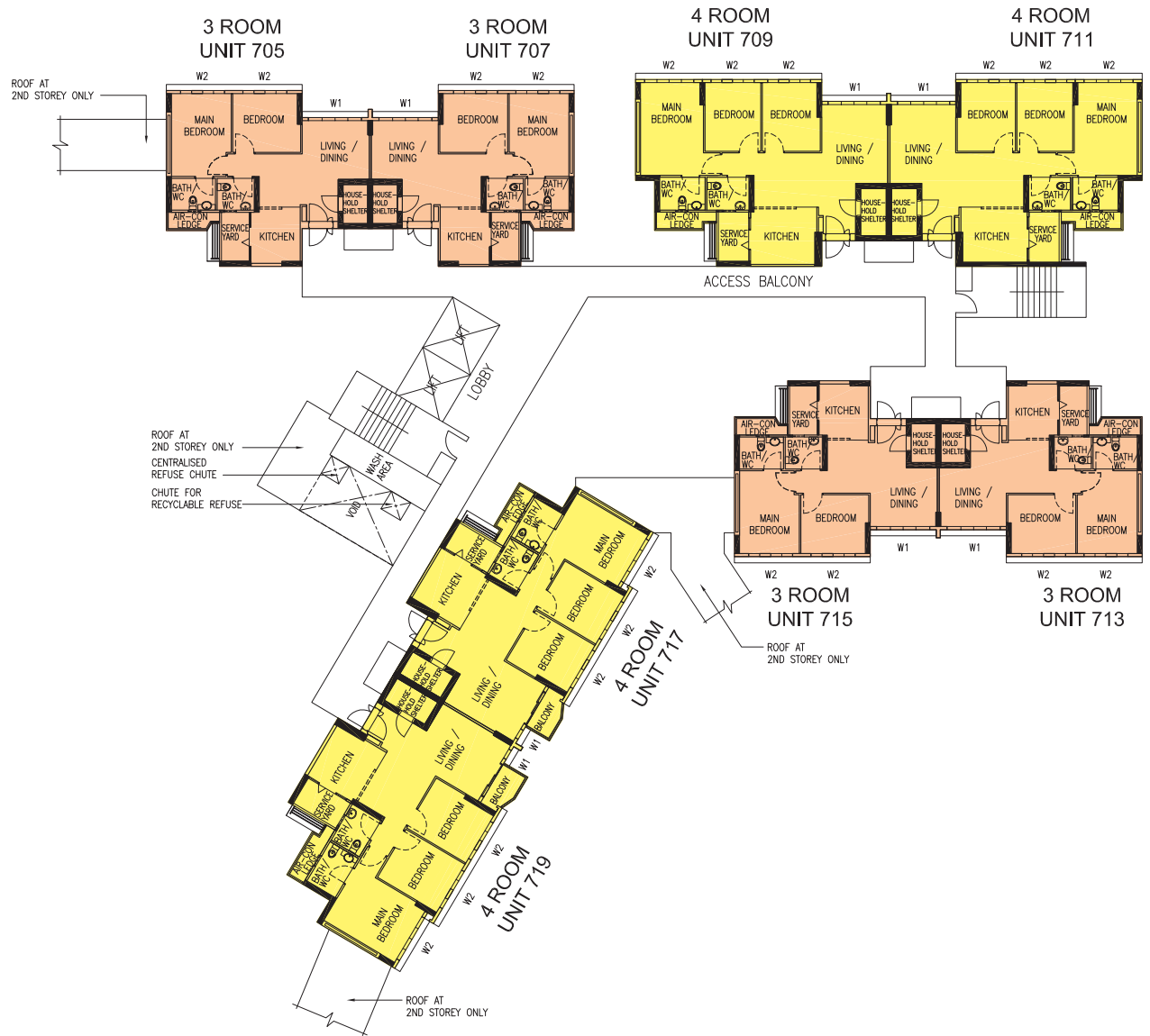
- W1 - FULL HEIGHT WINDOW (APPROX. 300 mm HIGH PARAPET WALL)
- W2 - THREE QUARTER HEIGHT WINDOW (APPROX. 500mm HIGH PARAPET WALL)

UNLESS OTHERWISE INDICATED, ALL WINDOWS WILL BE STANDARD HEIGHT WINDOWS.

BLOCK 682C
(16TH & 17TH STOREY PLAN)

The coloured floor plan is not intended to demarcate the boundary of the flat.





LEGEND:

- 3 ROOM
- 4 ROOM

WINDOW LEGEND :

- W1 - FULL HEIGHT WINDOW (APPROX. 300 mm HIGH PARAPET WALL)
- W2 - THREE QUARTER HEIGHT WINDOW (APPROX. 500mm HIGH PARAPET WALL)

UNLESS OTHERWISE INDICATED, ALL WINDOWS WILL BE STANDARD HEIGHT WINDOWS.

BLOCK 683A
(2ND,3RD & 13TH STOREY PLAN)

The coloured floor plan is not intended to demarcate the boundary of the flat.





LEGEND:

- 3 ROOM
- 4 ROOM

WINDOW LEGEND :

- W1 - FULL HEIGHT WINDOW (APPROX. 300 mm HIGH PARAPET WALL)
- W2 - THREE QUARTER HEIGHT WINDOW (APPROX. 500mm HIGH PARAPET WALL)

UNLESS OTHERWISE INDICATED, ALL WINDOWS WILL BE STANDARD HEIGHT WINDOWS.

BLOCK 683A
(4TH,5TH,10TH TO 12TH STOREY PLAN)

The coloured floor plan is not intended to demarcate the boundary of the flat.





LEGEND:

- 3 ROOM
- 4 ROOM

WINDOW LEGEND :

- W1 - FULL HEIGHT WINDOW (APPROX. 300 mm HIGH PARAPET WALL)
- W2 - THREE QUARTER HEIGHT WINDOW (APPROX. 500mm HIGH PARAPET WALL)

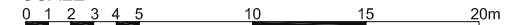
UNLESS OTHERWISE INDICATED, ALL WINDOWS WILL BE STANDARD HEIGHT WINDOWS.

BLOCK 683A

(6TH TO 8TH, 14TH & 15TH STOREY PLAN)

The coloured floor plan is not intended to demarcate the boundary of the flat.

SCALE





LEGEND:

- 3 ROOM
- 4 ROOM

WINDOW LEGEND :

- W1 - FULL HEIGHT WINDOW (APPROX. 300 mm HIGH PARAPET WALL)
- W2 - THREE QUARTER HEIGHT WINDOW (APPROX. 500mm HIGH PARAPET WALL)

UNLESS OTHERWISE INDICATED, ALL WINDOWS WILL BE STANDARD HEIGHT WINDOWS.

BLOCK 683A
(9TH STOREY PLAN)

The coloured floor plan is not intended to demarcate the boundary of the flat.





LEGEND:
 3 ROOM
 4 ROOM

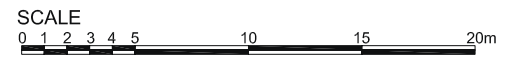
WINDOW LEGEND :
W1 - FULL HEIGHT WINDOW (APPROX. 300 mm HIGH PARAPET WALL)
W2 - THREE QUARTER HEIGHT WINDOW (APPROX. 500mm HIGH PARAPET WALL)

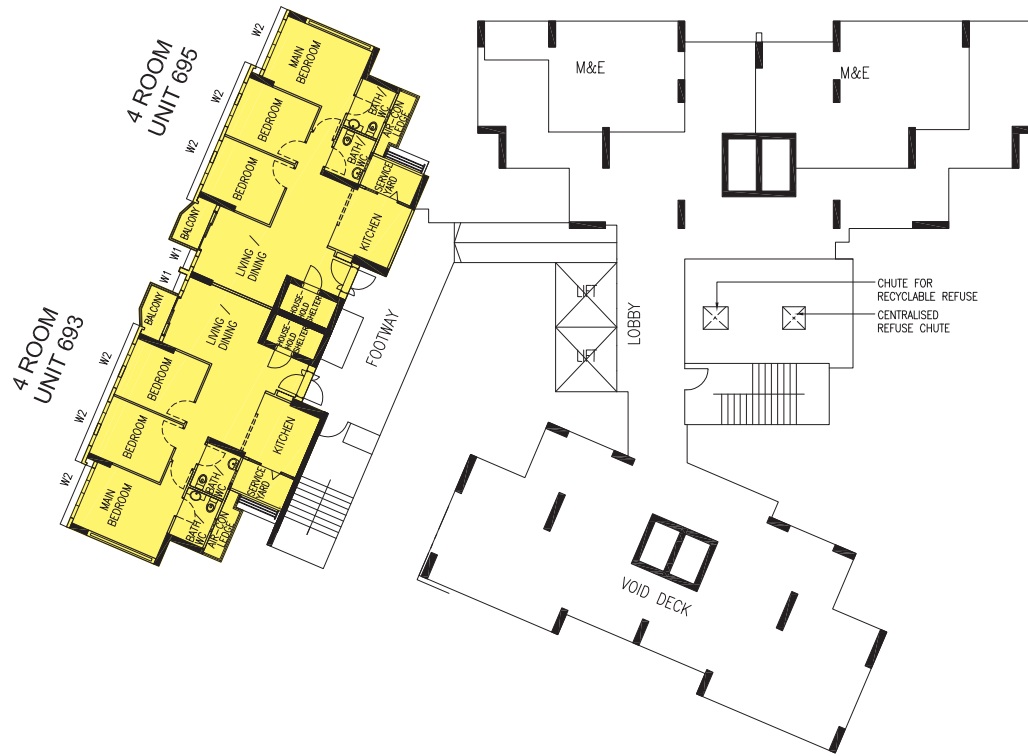
UNLESS OTHERWISE INDICATED, ALL WINDOWS WILL BE STANDARD HEIGHT WINDOWS.

BLOCK 683A

(16TH & 17TH STOREY PLAN)

The coloured floor plan is not intended to demarcate the boundary of the flat.





LEGEND:

- 3 ROOM
- 4 ROOM

WINDOW LEGEND :

- W1 - FULL HEIGHT WINDOW (APPROX. 300 mm HIGH PARAPET WALL)
- W2 - THREE QUARTER HEIGHT WINDOW (APPROX. 500mm HIGH PARAPET WALL)

UNLESS OTHERWISE INDICATED, ALL WINDOWS WILL BE STANDARD HEIGHT WINDOWS.

BLOCK 683B
(1ST STOREY PLAN)

The coloured floor plan is not intended to demarcate the boundary of the flat.





LEGEND:

- 3 ROOM
- 4 ROOM

WINDOW LEGEND :

- W1 - FULL HEIGHT WINDOW (APPROX. 300 mm HIGH PARAPET WALL)
- W2 - THREE QUARTER HEIGHT WINDOW (APPROX. 500mm HIGH PARAPET WALL)

UNLESS OTHERWISE INDICATED, ALL WINDOWS WILL BE STANDARD HEIGHT WINDOWS.

BLOCK 683B
(2ND & 3RD STOREY PLAN)

The coloured floor plan is not intended to demarcate the boundary of the flat.





LEGEND:

- 3 ROOM
- 4 ROOM

WINDOW LEGEND :

- W1 - FULL HEIGHT WINDOW (APPROX. 300 mm HIGH PARAPET WALL)
- W2 - THREE QUARTER HEIGHT WINDOW (APPROX. 500mm HIGH PARAPET WALL)

UNLESS OTHERWISE INDICATED, ALL WINDOWS WILL BE STANDARD HEIGHT WINDOWS.

BLOCK 683B
(4TH & 5TH STOREY PLAN)

The coloured floor plan is not intended to demarcate the boundary of the flat.





BLOCK 683B
(6TH STOREY PLAN)

LEGEND:

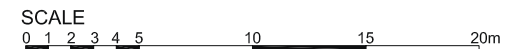
- 3 ROOM
- 4 ROOM

WINDOW LEGEND :

- W1 - FULL HEIGHT WINDOW (APPROX. 300 mm HIGH PARAPET WALL)
- W2 - THREE QUARTER HEIGHT WINDOW (APPROX. 500mm HIGH PARAPET WALL)

UNLESS OTHERWISE INDICATED, ALL WINDOWS WILL BE STANDARD HEIGHT WINDOWS.

The coloured floor plan is not intended to demarcate the boundary of the flat.





LEGEND:

- 3 ROOM
- 4 ROOM

WINDOW LEGEND :

- W1 - FULL HEIGHT WINDOW (APPROX. 300 mm HIGH PARAPET WALL)
- W2 - THREE QUARTER HEIGHT WINDOW (APPROX. 500mm HIGH PARAPET WALL)

UNLESS OTHERWISE INDICATED, ALL WINDOWS WILL BE STANDARD HEIGHT WINDOWS.

The coloured floor plan is not intended to demarcate the boundary of the flat.

BLOCK 683B
(7TH TO 17TH STOREY PLAN)





LEGEND:

- 4 ROOM
- 5 ROOM

WINDOW LEGEND :

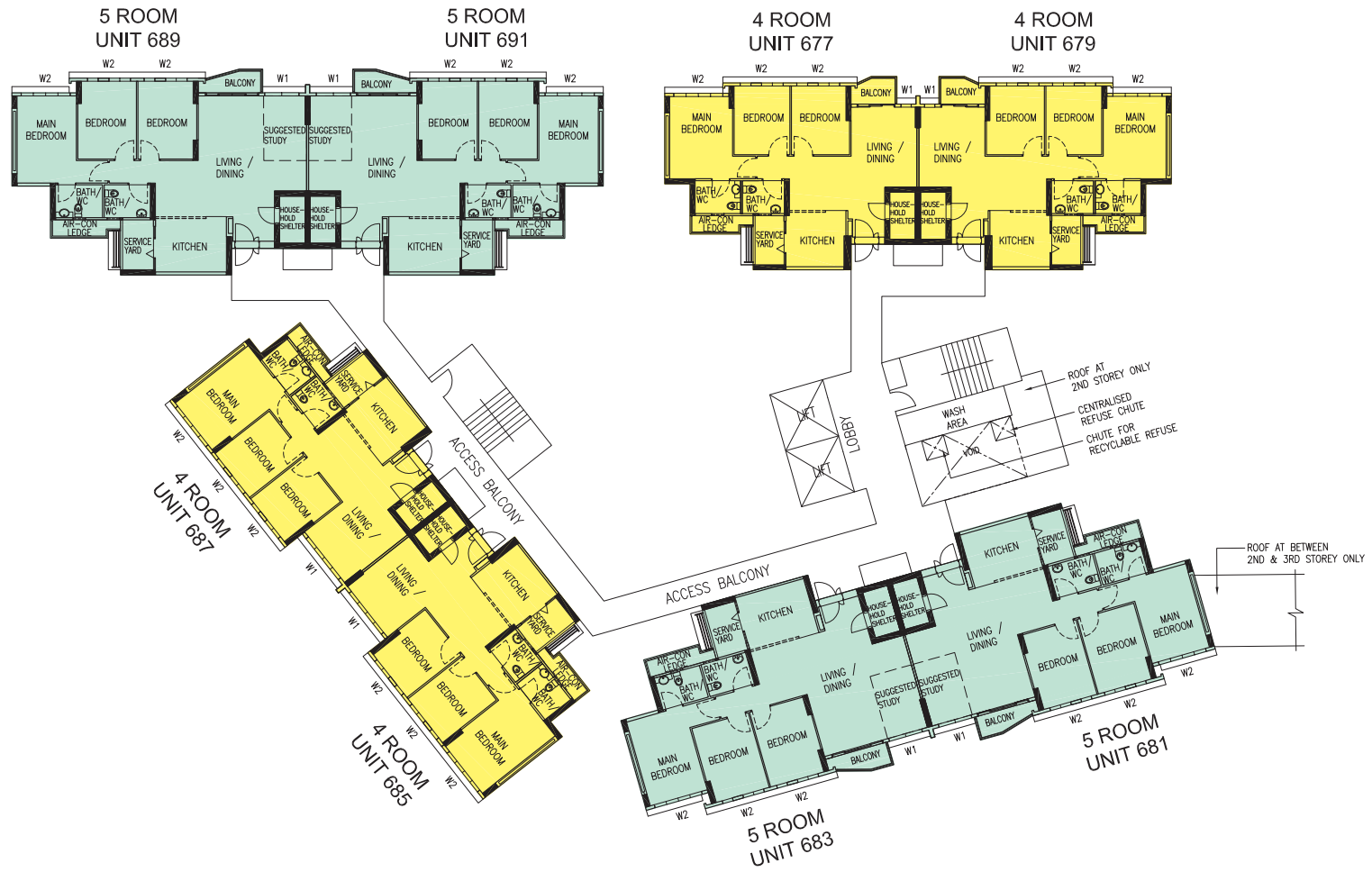
- W1 - FULL HEIGHT WINDOW (APPROX. 300 mm HIGH PARAPET WALL)
- W2 - THREE QUARTER HEIGHT WINDOW (APPROX. 500mm HIGH PARAPET WALL)

UNLESS OTHERWISE INDICATED, ALL WINDOWS WILL BE STANDARD HEIGHT WINDOWS.

BLOCK 683C
(1ST STOREY PLAN)

The coloured floor plan is not intended to demarcate the boundary of the flat.





LEGEND:

- 4 ROOM
- 5 ROOM

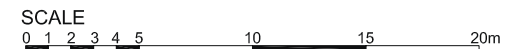
WINDOW LEGEND :

- W1 - FULL HEIGHT WINDOW (APPROX. 300 mm HIGH PARAPET WALL)
- W2 - THREE QUARTER HEIGHT WINDOW (APPROX. 500mm HIGH PARAPET WALL)

UNLESS OTHERWISE INDICATED, ALL WINDOWS WILL BE STANDARD HEIGHT WINDOWS.

BLOCK 683C
(2ND & 3RD STOREY PLAN)

The coloured floor plan is not intended to demarcate the boundary of the flat.





LEGEND:

- 4 ROOM
- 5 ROOM

WINDOW LEGEND :

- W1 - FULL HEIGHT WINDOW (APPROX. 300 mm HIGH PARAPET WALL)
- W2 - THREE QUARTER HEIGHT WINDOW (APPROX. 500mm HIGH PARAPET WALL)

UNLESS OTHERWISE INDICATED, ALL WINDOWS WILL BE STANDARD HEIGHT WINDOWS.

BLOCK 683C
(4TH & 5TH STOREY PLAN)

The coloured floor plan is not intended to demarcate the boundary of the flat.





LEGEND:

- 4 ROOM
- 5 ROOM

WINDOW LEGEND :

- W1 - FULL HEIGHT WINDOW (APPROX. 300 mm HIGH PARAPET WALL)
- W2 - THREE QUARTER HEIGHT WINDOW (APPROX. 500mm HIGH PARAPET WALL)

UNLESS OTHERWISE INDICATED, ALL WINDOWS WILL BE STANDARD HEIGHT WINDOWS.

BLOCK 683C
(6TH STOREY PLAN)

The coloured floor plan is not intended to demarcate the boundary of the flat.





LEGEND:

4 ROOM

5 ROOM

WINDOW LEGEND :

W1 - FULL HEIGHT WINDOW (APPROX. 300 mm HIGH PARAPET WALL)

W2 - THREE QUARTER HEIGHT WINDOW (APPROX. 500mm HIGH PARAPET WALL)

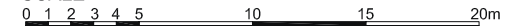
UNLESS OTHERWISE INDICATED, ALL WINDOWS WILL BE STANDARD HEIGHT WINDOWS.

BLOCK 683C

(7TH,8TH,14TH & 15TH STOREY PLAN)

The coloured floor plan is not intended to demarcate the boundary of the flat.

SCALE





LEGEND:

4 ROOM

5 ROOM

WINDOW LEGEND :

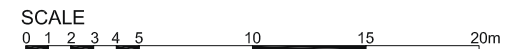
W1 - FULL HEIGHT WINDOW (APPROX. 300 mm HIGH PARAPET WALL)

W2 - THREE QUARTER HEIGHT WINDOW (APPROX. 500mm HIGH PARAPET WALL)

UNLESS OTHERWISE INDICATED, ALL WINDOWS WILL BE STANDARD HEIGHT WINDOWS.

BLOCK 683C
(9TH & 13TH STOREY PLAN)

The coloured floor plan is not intended to demarcate the boundary of the flat.





LEGEND:

- 4 ROOM
- 5 ROOM

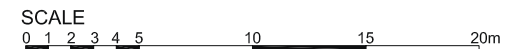
WINDOW LEGEND :

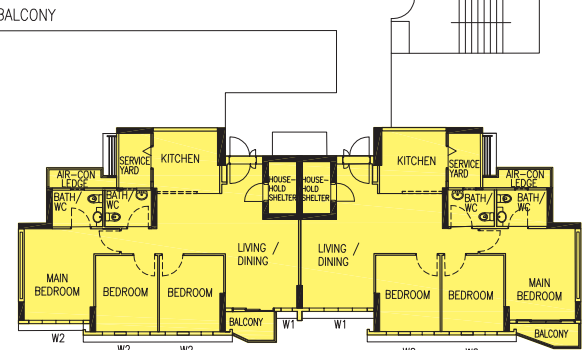
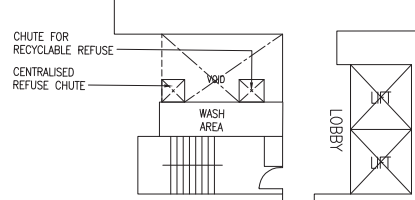
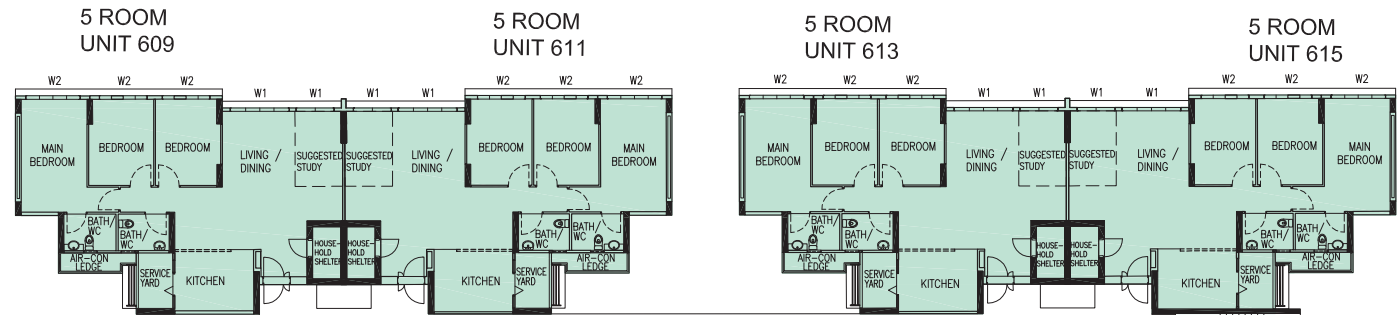
- W1 - FULL HEIGHT WINDOW (APPROX. 300 mm HIGH PARAPET WALL)
- W2 - THREE QUARTER HEIGHT WINDOW (APPROX. 500mm HIGH PARAPET WALL)

UNLESS OTHERWISE INDICATED, ALL WINDOWS WILL BE STANDARD HEIGHT WINDOWS.

BLOCK 683C
(10TH TO 12TH STOREY PLAN)

The coloured floor plan is not intended to demarcate the boundary of the flat.





LEGEND:

- 4 ROOM
- 5 ROOM

WINDOW LEGEND :

- W1 - FULL HEIGHT WINDOW (APPROX. 300 mm HIGH PARAPET WALL)
- W2 - THREE QUARTER HEIGHT WINDOW (APPROX. 500mm HIGH PARAPET WALL)

UNLESS OTHERWISE INDICATED, ALL WINDOWS WILL BE STANDARD HEIGHT WINDOWS.

BLOCK 684A
(4TH & 5TH STOREY PLAN)

The coloured floor plan is not intended to demarcate the boundary of the flat.





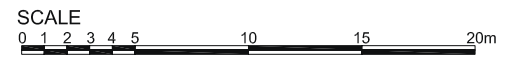
LEGEND:
 4 ROOM
 5 ROOM

WINDOW LEGEND :
W1 - FULL HEIGHT WINDOW (APPROX. 300 mm HIGH PARAPET WALL)
W2 - THREE QUARTER HEIGHT WINDOW (APPROX. 500mm HIGH PARAPET WALL)

UNLESS OTHERWISE INDICATED, ALL WINDOWS WILL BE STANDARD HEIGHT WINDOWS.

BLOCK 684A
(6TH TO 8TH STOREY PLAN)

The coloured floor plan is not intended to demarcate the boundary of the flat.





LEGEND:

- 4 ROOM
- 5 ROOM

WINDOW LEGEND :

- W1 - FULL HEIGHT WINDOW (APPROX. 300 mm HIGH PARAPET WALL)
- W2 - THREE QUARTER HEIGHT WINDOW (APPROX. 500mm HIGH PARAPET WALL)

UNLESS OTHERWISE INDICATED, ALL WINDOWS WILL BE STANDARD HEIGHT WINDOWS.

BLOCK 684A
(10TH TO 12TH STOREY PLAN)

The coloured floor plan is not intended to demarcate the boundary of the flat.





LEGEND:

- 4 ROOM
- 5 ROOM

WINDOW LEGEND :

- W1 - FULL HEIGHT WINDOW (APPROX. 300 mm HIGH PARAPET WALL)
- W2 - THREE QUARTER HEIGHT WINDOW (APPROX. 500mm HIGH PARAPET WALL)

UNLESS OTHERWISE INDICATED, ALL WINDOWS WILL BE STANDARD HEIGHT WINDOWS.

BLOCK 684A
(13TH STOREY PLAN)

The coloured floor plan is not intended to demarcate the boundary of the flat.





LEGEND:

- 4 ROOM
- 5 ROOM

WINDOW LEGEND :

- W1 - FULL HEIGHT WINDOW (APPROX. 300 mm HIGH PARAPET WALL)
- W2 - THREE QUARTER HEIGHT WINDOW (APPROX. 500mm HIGH PARAPET WALL)

UNLESS OTHERWISE INDICATED, ALL WINDOWS WILL BE STANDARD HEIGHT WINDOWS.

BLOCK 684A
(14TH & 15TH STOREY PLAN)

The coloured floor plan is not intended to demarcate the boundary of the flat.





LEGEND:

- 4 ROOM
- 5 ROOM

WINDOW LEGEND :

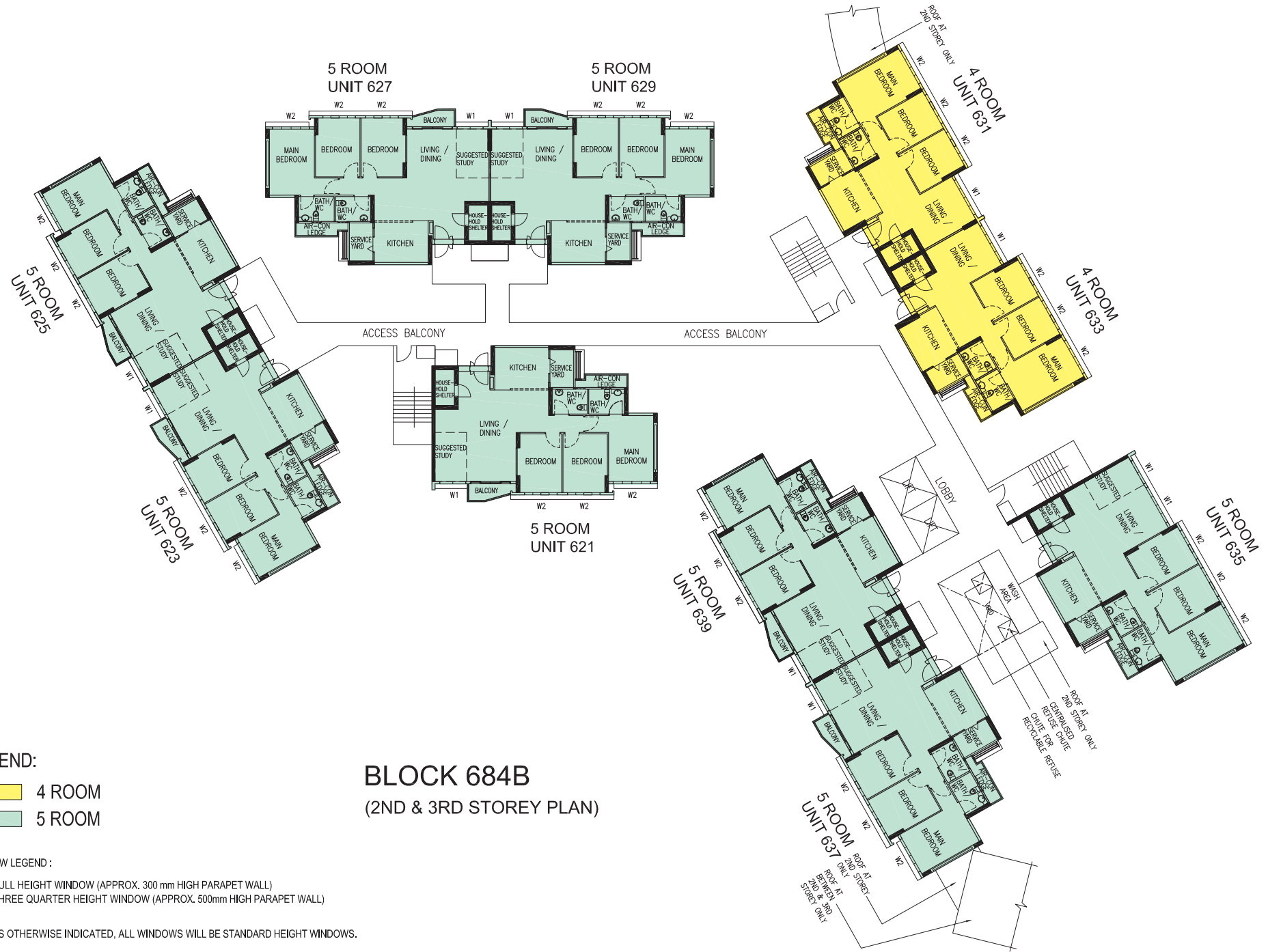
- W1 - FULL HEIGHT WINDOW (APPROX. 300 mm HIGH PARAPET WALL)
- W2 - THREE QUARTER HEIGHT WINDOW (APPROX. 500mm HIGH PARAPET WALL)

UNLESS OTHERWISE INDICATED, ALL WINDOWS WILL BE STANDARD HEIGHT WINDOWS.

BLOCK 684A
(16TH & 17TH STOREY PLAN)

The coloured floor plan is not intended to demarcate the boundary of the flat.





LEGEND:

- 4 ROOM
- 5 ROOM

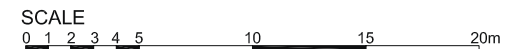
WINDOW LEGEND :

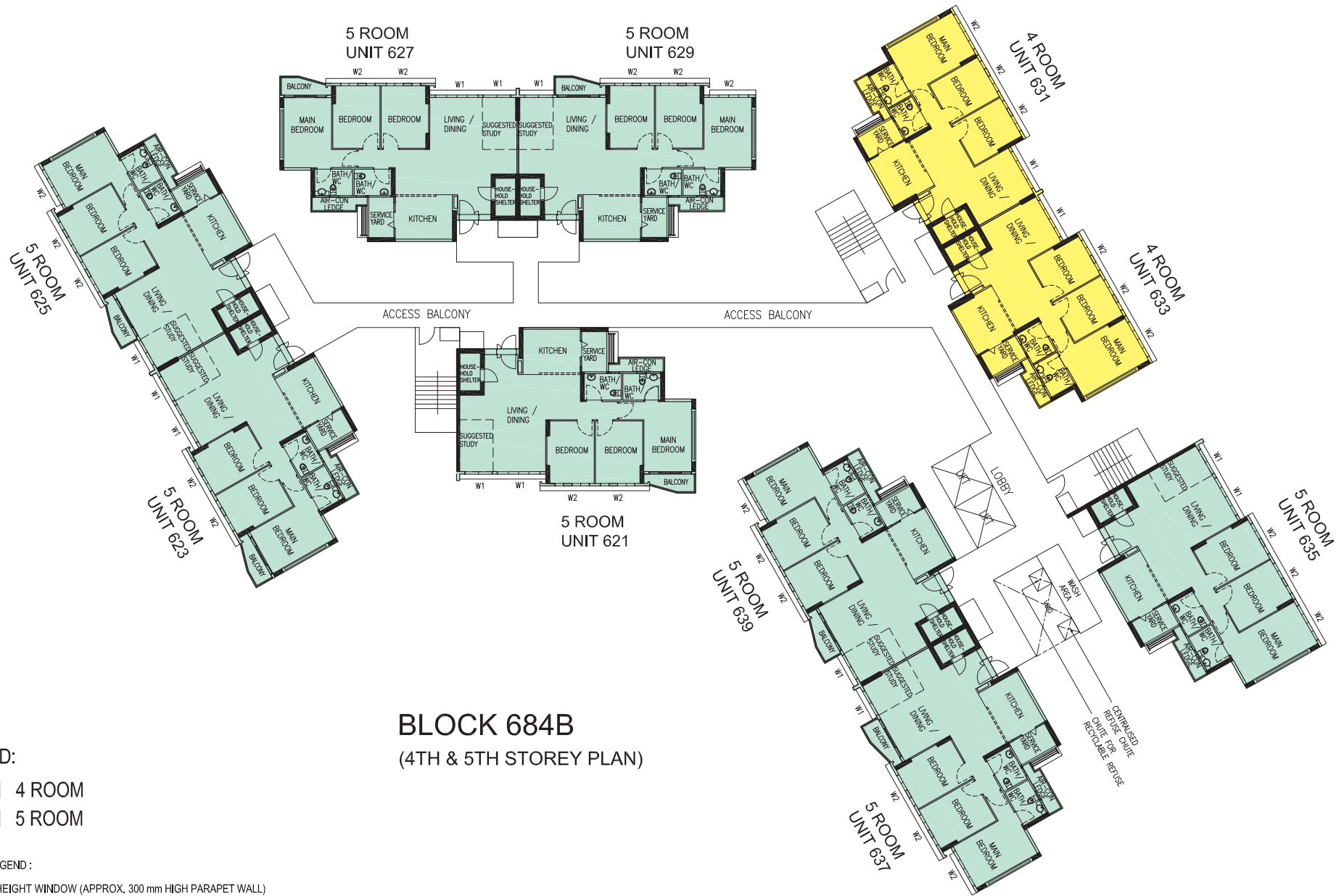
- W1 - FULL HEIGHT WINDOW (APPROX. 300 mm HIGH PARAPET WALL)
- W2 - THREE QUARTER HEIGHT WINDOW (APPROX. 500mm HIGH PARAPET WALL)

UNLESS OTHERWISE INDICATED, ALL WINDOWS WILL BE STANDARD HEIGHT WINDOWS.

BLOCK 684B
(2ND & 3RD STOREY PLAN)

The coloured floor plan is not intended to demarcate the boundary of the flat.





BLOCK 684B
(4TH & 5TH STOREY PLAN)

LEGEND:

- 4 ROOM
- 5 ROOM

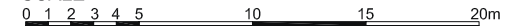
WINDOW LEGEND :

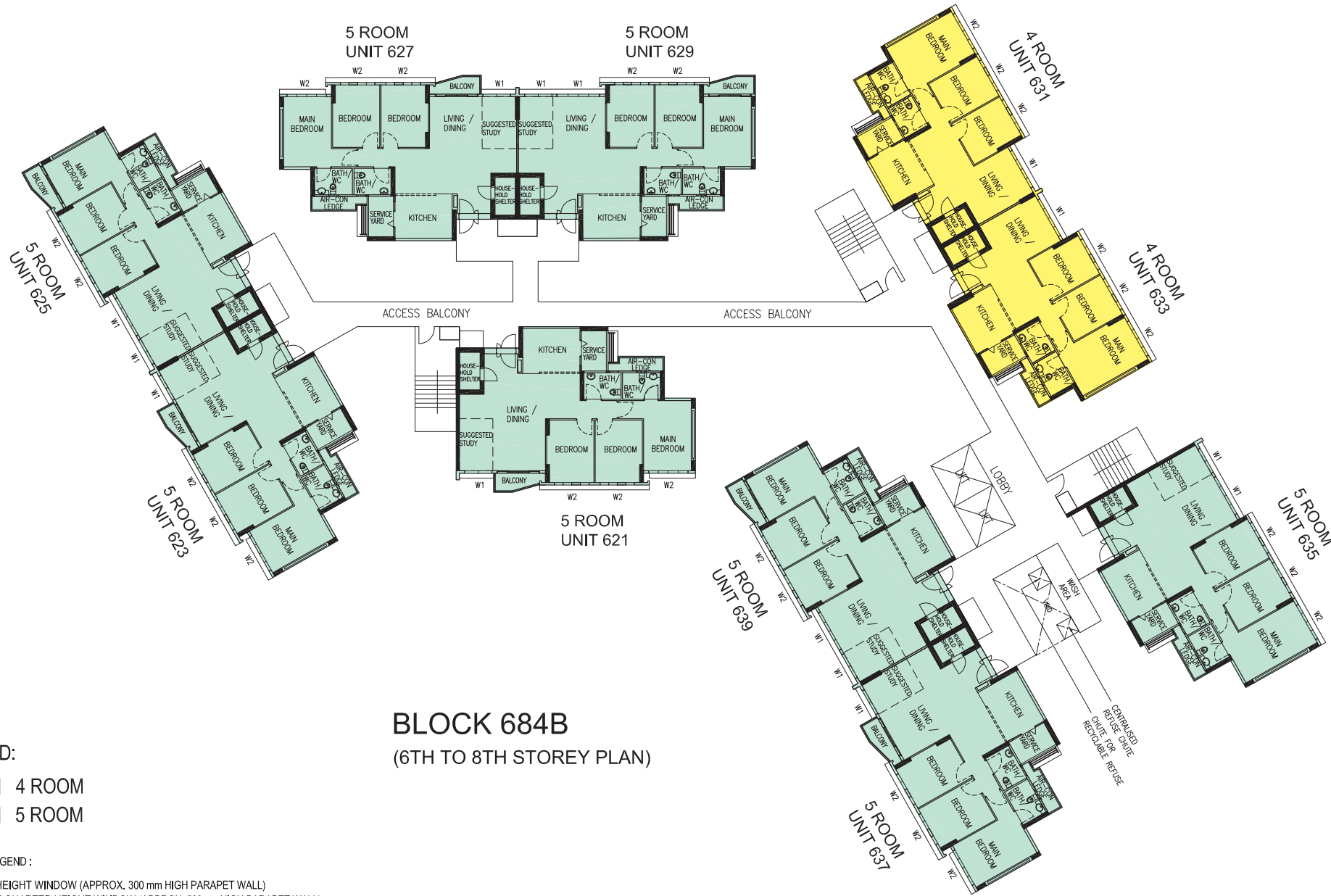
- W1 - FULL HEIGHT WINDOW (APPROX. 300 mm HIGH PARAPET WALL)
- W2 - THREE QUARTER HEIGHT WINDOW (APPROX. 500mm HIGH PARAPET WALL)

UNLESS OTHERWISE INDICATED, ALL WINDOWS WILL BE STANDARD HEIGHT WINDOWS.

The coloured floor plan is not intended to demarcate the boundary of the flat.

SCALE





BLOCK 684B
(6TH TO 8TH STOREY PLAN)

LEGEND:

- 4 ROOM
- 5 ROOM

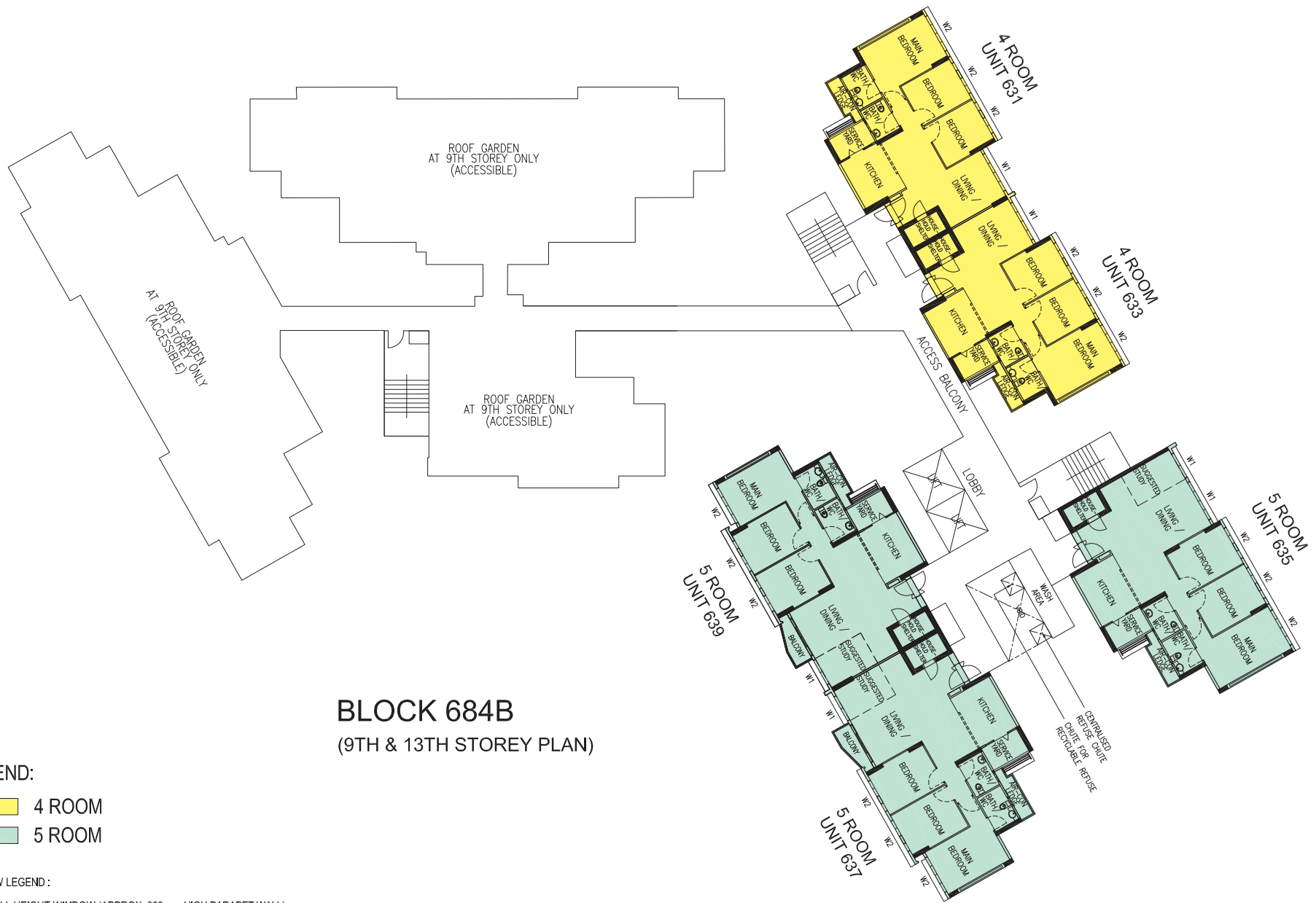
WINDOW LEGEND :

- W1 - FULL HEIGHT WINDOW (APPROX. 300 mm HIGH PARAPET WALL)
- W2 - THREE QUARTER HEIGHT WINDOW (APPROX. 500mm HIGH PARAPET WALL)

UNLESS OTHERWISE INDICATED, ALL WINDOWS WILL BE STANDARD HEIGHT WINDOWS.

The coloured floor plan is not intended to demarcate the boundary of the flat.





BLOCK 684B
(9TH & 13TH STOREY PLAN)

LEGEND:

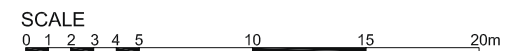
- 4 ROOM
- 5 ROOM

WINDOW LEGEND :

- W1 - FULL HEIGHT WINDOW (APPROX. 300 mm HIGH PARAPET WALL)
- W2 - THREE QUARTER HEIGHT WINDOW (APPROX. 500mm HIGH PARAPET WALL)

UNLESS OTHERWISE INDICATED, ALL WINDOWS WILL BE STANDARD HEIGHT WINDOWS.

The coloured floor plan is not intended to demarcate the boundary of the flat.





LEGEND:

- 4 ROOM
- 5 ROOM

BLOCK 684B
(10TH TO 12TH STOREY PLAN)

WINDOW LEGEND :

- W1 - FULL HEIGHT WINDOW (APPROX. 300 mm HIGH PARAPET WALL)
- W2 - THREE QUARTER HEIGHT WINDOW (APPROX. 500mm HIGH PARAPET WALL)

UNLESS OTHERWISE INDICATED, ALL WINDOWS WILL BE STANDARD HEIGHT WINDOWS.

The coloured floor plan is not intended to demarcate the boundary of the flat.



BLOCK 684B (14TH & 15TH STOREY PLAN)

LEGEND:

- 4 ROOM
- 5 ROOM

WINDOW LEGEND :

- W1 - FULL HEIGHT WINDOW (APPROX. 300 mm HIGH PARAPET WALL)
- W2 - THREE QUARTER HEIGHT WINDOW (APPROX. 500mm HIGH PARAPET WALL)

UNLESS OTHERWISE INDICATED, ALL WINDOWS WILL BE STANDARD HEIGHT WINDOWS.



The coloured floor plan is not intended to demarcate the boundary of the flat.



BLOCK 684B (16TH & 17TH STOREY PLAN)

LEGEND:

- 4 ROOM
- 5 ROOM

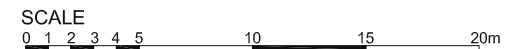
WINDOW LEGEND :

- W1 - FULL HEIGHT WINDOW (APPROX. 300 mm HIGH PARAPET WALL)
- W2 - THREE QUARTER HEIGHT WINDOW (APPROX. 500mm HIGH PARAPET WALL)

UNLESS OTHERWISE INDICATED, ALL WINDOWS WILL BE STANDARD HEIGHT WINDOWS.



The coloured floor plan is not intended to demarcate the boundary of the flat.





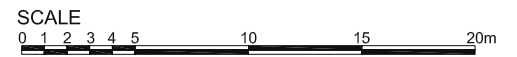
- LEGEND:**
- 3 ROOM
 - 4 ROOM
 - 5 ROOM

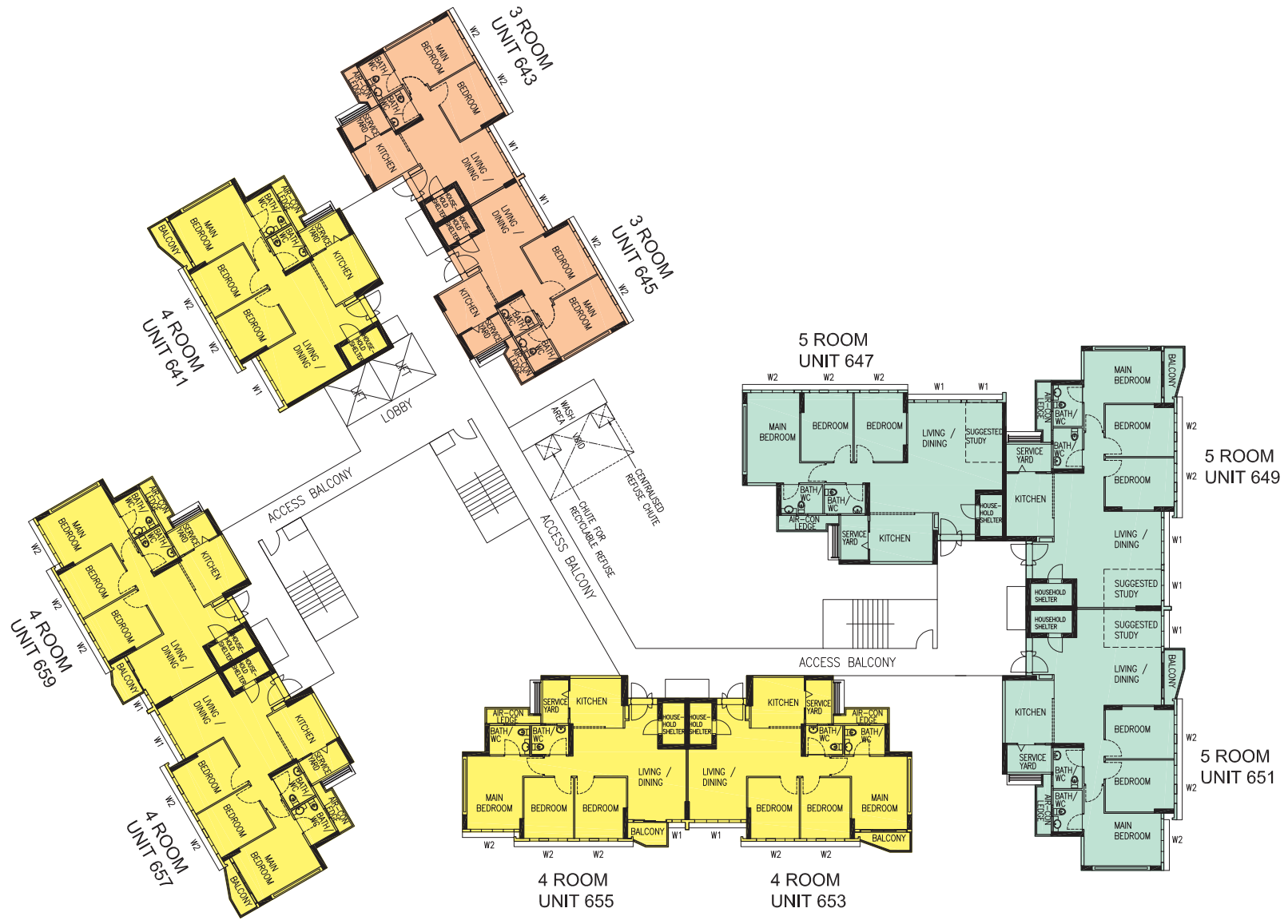
WINDOW LEGEND :
 W1 - FULL HEIGHT WINDOW (APPROX. 300 mm HIGH PARAPET WALL)
 W2 - THREE QUARTER HEIGHT WINDOW (APPROX. 500mm HIGH PARAPET WALL)

UNLESS OTHERWISE INDICATED, ALL WINDOWS WILL BE STANDARD HEIGHT WINDOWS.

BLOCK 684C (2ND & 3RD STOREY PLAN)

The coloured floor plan is not intended to demarcate the boundary of the flat.





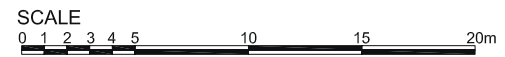
- LEGEND:**
- 3 ROOM
 - 4 ROOM
 - 5 ROOM

WINDOW LEGEND :
 W1 - FULL HEIGHT WINDOW (APPROX. 300 mm HIGH PARAPET WALL)
 W2 - THREE QUARTER HEIGHT WINDOW (APPROX. 500mm HIGH PARAPET WALL)

UNLESS OTHERWISE INDICATED, ALL WINDOWS WILL BE STANDARD HEIGHT WINDOWS.

BLOCK 684C
 (4TH & 5TH STOREY PLAN)

The coloured floor plan is not intended to demarcate the boundary of the flat.





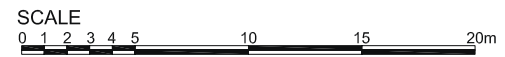
- LEGEND:**
- 3 ROOM
 - 4 ROOM
 - 5 ROOM

WINDOW LEGEND :
 W1 - FULL HEIGHT WINDOW (APPROX. 300 mm HIGH PARAPET WALL)
 W2 - THREE QUARTER HEIGHT WINDOW (APPROX. 500mm HIGH PARAPET WALL)

UNLESS OTHERWISE INDICATED, ALL WINDOWS WILL BE STANDARD HEIGHT WINDOWS.

BLOCK 684C (6TH TO 8TH STOREY PLAN)

The coloured floor plan is not intended to demarcate the boundary of the flat.





LEGEND:

- 3 ROOM
- 4 ROOM
- 5 ROOM

WINDOW LEGEND :

- W1 - FULL HEIGHT WINDOW (APPROX. 300 mm HIGH PARAPET WALL)
- W2 - THREE QUARTER HEIGHT WINDOW (APPROX. 500mm HIGH PARAPET WALL)

UNLESS OTHERWISE INDICATED, ALL WINDOWS WILL BE STANDARD HEIGHT WINDOWS.

BLOCK 684C
(9TH & 13TH STOREY PLAN)

The coloured floor plan is not intended to demarcate the boundary of the flat.





LEGEND:

- 3 ROOM
- 4 ROOM
- 5 ROOM

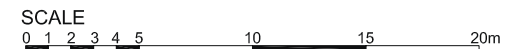
WINDOW LEGEND :

- W1 - FULL HEIGHT WINDOW (APPROX. 300 mm HIGH PARAPET WALL)
- W2 - THREE QUARTER HEIGHT WINDOW (APPROX. 500mm HIGH PARAPET WALL)

UNLESS OTHERWISE INDICATED, ALL WINDOWS WILL BE STANDARD HEIGHT WINDOWS.

BLOCK 684C
(10TH TO 12TH STOREY PLAN)

The coloured floor plan is not intended to demarcate the boundary of the flat.





LEGEND:

- 3 ROOM
- 4 ROOM
- 5 ROOM

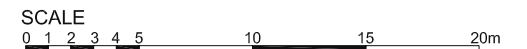
WINDOW LEGEND :

- W1 - FULL HEIGHT WINDOW (APPROX. 300 mm HIGH PARAPET WALL)
- W2 - THREE QUARTER HEIGHT WINDOW (APPROX. 500mm HIGH PARAPET WALL)

UNLESS OTHERWISE INDICATED, ALL WINDOWS WILL BE STANDARD HEIGHT WINDOWS.

BLOCK 684C
(14TH & 15TH STOREY PLAN)

The coloured floor plan is not intended to demarcate the boundary of the flat.





LEGEND:

- 3 ROOM
- 4 ROOM
- 5 ROOM

WINDOW LEGEND :

- W1 - FULL HEIGHT WINDOW (APPROX. 300 mm HIGH PARAPET WALL)
- W2 - THREE QUARTER HEIGHT WINDOW (APPROX. 500mm HIGH PARAPET WALL)

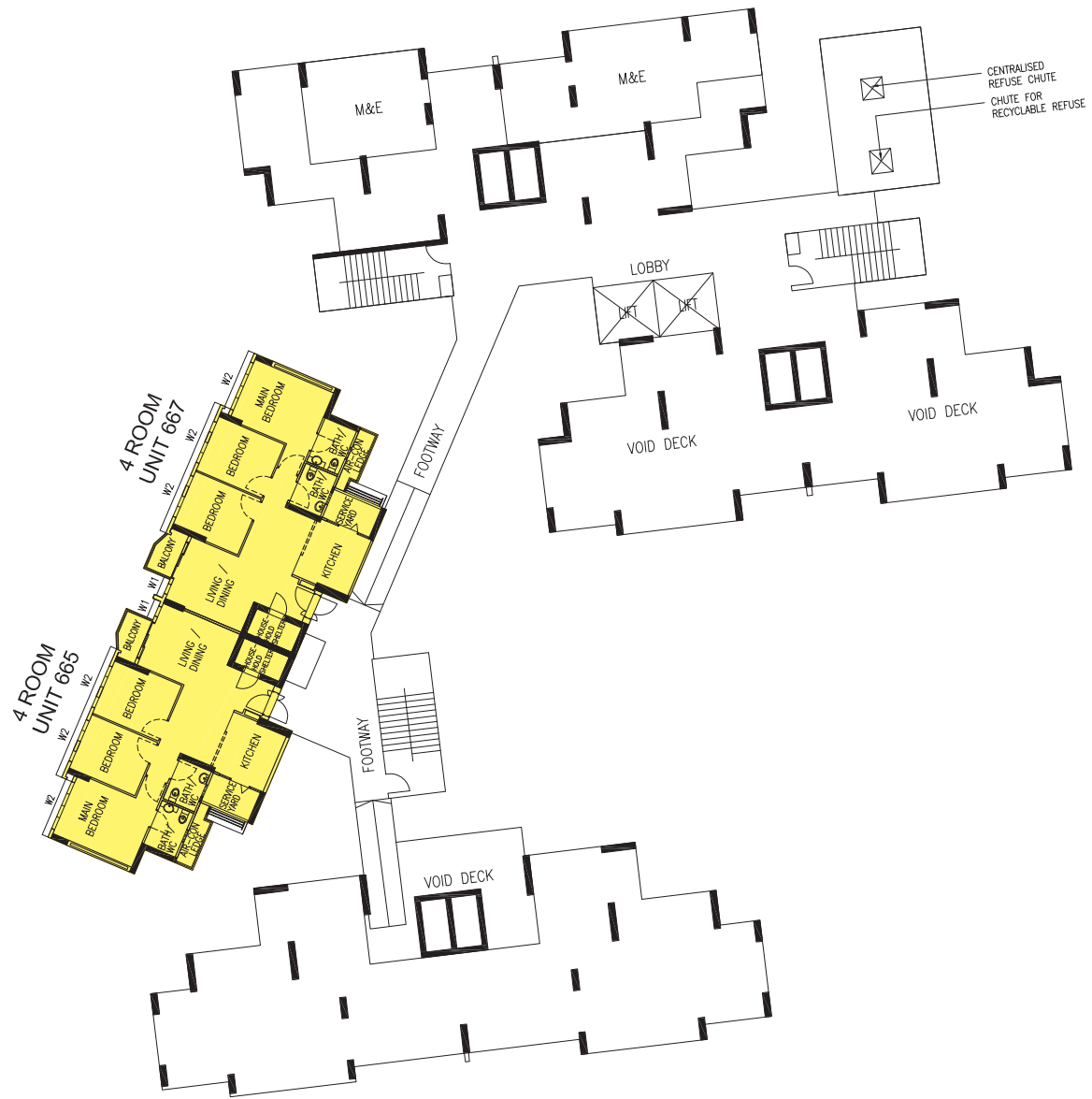
UNLESS OTHERWISE INDICATED, ALL WINDOWS WILL BE STANDARD HEIGHT WINDOWS.

BLOCK 684C
(16TH & 17TH STOREY PLAN)

The coloured floor plan is not intended to demarcate the boundary of the flat.



BLOCK 684D (1ST STOREY PLAN)



LEGEND:

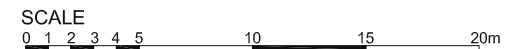
- 4 ROOM
- 5 ROOM

WINDOW LEGEND :

- W1 - FULL HEIGHT WINDOW (APPROX. 300 mm HIGH PARAPET WALL)
- W2 - THREE QUARTER HEIGHT WINDOW (APPROX. 500mm HIGH PARAPET WALL)

UNLESS OTHERWISE INDICATED, ALL WINDOWS WILL BE STANDARD HEIGHT WINDOWS.

The coloured floor plan is not intended to demarcate the boundary of the flat.



BLOCK 684D (2ND & 3RD STOREY PLAN)



LEGEND:

- 4 ROOM
- 5 ROOM

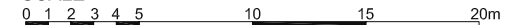
WINDOW LEGEND :

- W1 - FULL HEIGHT WINDOW (APPROX. 300 mm HIGH PARAPET WALL)
- W2 - THREE QUARTER HEIGHT WINDOW (APPROX. 500mm HIGH PARAPET WALL)

UNLESS OTHERWISE INDICATED, ALL WINDOWS WILL BE STANDARD HEIGHT WINDOWS.

The coloured floor plan is not intended to demarcate the boundary of the flat.

SCALE



BLOCK 684D

(4TH & 5TH STOREY PLAN)



LEGEND:

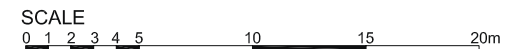
- 4 ROOM
- 5 ROOM

WINDOW LEGEND :

- W1 - FULL HEIGHT WINDOW (APPROX. 300 mm HIGH PARAPET WALL)
- W2 - THREE QUARTER HEIGHT WINDOW (APPROX. 500mm HIGH PARAPET WALL)

UNLESS OTHERWISE INDICATED, ALL WINDOWS WILL BE STANDARD HEIGHT WINDOWS.

The coloured floor plan is not intended to demarcate the boundary of the flat.



BLOCK 684D (6TH STOREY PLAN)



LEGEND:

- 4 ROOM
- 5 ROOM

WINDOW LEGEND :

- W1 - FULL HEIGHT WINDOW (APPROX. 300 mm HIGH PARAPET WALL)
- W2 - THREE QUARTER HEIGHT WINDOW (APPROX. 500mm HIGH PARAPET WALL)

UNLESS OTHERWISE INDICATED, ALL WINDOWS WILL BE STANDARD HEIGHT WINDOWS.

The coloured floor plan is not intended to demarcate the boundary of the flat.



BLOCK 684D

(7TH, 8TH, 14TH & 15TH STOREY PLAN)



LEGEND:

- 4 ROOM
- 5 ROOM

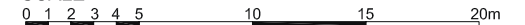
WINDOW LEGEND :

- W1 - FULL HEIGHT WINDOW (APPROX. 300 mm HIGH PARAPET WALL)
- W2 - THREE QUARTER HEIGHT WINDOW (APPROX. 500mm HIGH PARAPET WALL)

UNLESS OTHERWISE INDICATED, ALL WINDOWS WILL BE STANDARD HEIGHT WINDOWS.

The coloured floor plan is not intended to demarcate the boundary of the flat.

SCALE





LEGEND:

- 4 ROOM
- 5 ROOM

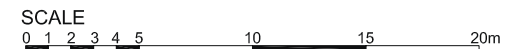
WINDOW LEGEND :

- W1 - FULL HEIGHT WINDOW (APPROX. 300 mm HIGH PARAPET WALL)
- W2 - THREE QUARTER HEIGHT WINDOW (APPROX. 500mm HIGH PARAPET WALL)

UNLESS OTHERWISE INDICATED, ALL WINDOWS WILL BE STANDARD HEIGHT WINDOWS.

BLOCK 684D
(9TH & 13TH STOREY PLAN)

The coloured floor plan is not intended to demarcate the boundary of the flat.





LEGEND:

- 4 ROOM
- 5 ROOM

WINDOW LEGEND :

- W1 - FULL HEIGHT WINDOW (APPROX. 300 mm HIGH PARAPET WALL)
- W2 - THREE QUARTER HEIGHT WINDOW (APPROX. 500mm HIGH PARAPET WALL)

UNLESS OTHERWISE INDICATED, ALL WINDOWS WILL BE STANDARD HEIGHT WINDOWS.

BLOCK 684D
(10TH TO 12TH STOREY PLAN)

The coloured floor plan is not intended to demarcate the boundary of the flat.





LEGEND:

- 4 ROOM
- 5 ROOM

WINDOW LEGEND :

- W1 - FULL HEIGHT WINDOW (APPROX. 300 mm HIGH PARAPET WALL)
- W2 - THREE QUARTER HEIGHT WINDOW (APPROX. 500mm HIGH PARAPET WALL)

UNLESS OTHERWISE INDICATED, ALL WINDOWS WILL BE STANDARD HEIGHT WINDOWS.

BLOCK 684D
(16TH & 17TH STOREY PLAN)

The coloured floor plan is not intended to demarcate the boundary of the flat.



General Specifications For Waterway View

Foundation

Piled foundations.

Structure

Reinforced concrete structural framework with reinforced concrete slabs.

Roof

Reinforced concrete roof slab with precast concrete secondary roofing.

Walls

All external and internal walls are constructed with reinforced concrete/solid blocks/bricks with cement plastering/precast panels/precast lightweight concrete partitions / drywall partition system.

Windows

Aluminium framed windows with tinted glass.

Doors

Entrance	: decorative solid timber door and metal gate
Bedrooms	: decorative solid timber doors (Type D10) (optional)
Bathrooms/WC	: laminated semi-solid timber doors (Type D10a) (optional)
Household Shelter	: metal door
Service Yard	: aluminium framed door with glass
Balcony (where applicable)	: aluminium framed door with glass

Finishes

Ceilings	: skim coated or plastered and painted
Kitchen/Bathrooms/WC walls	: ceramic tiles
Other Walls	: skim coated or plastered and painted
Living/Dining floor	: polished porcelain tiles with timber skirting (optional)
Bedrooms floor	: timber strip flooring with timber skirting (optional)
Kitchen floor	: glazed porcelain tiles
Bathrooms/WC floor	: ceramic tiles
Service Yard floor	: glazed porcelain tiles with tile skirting
Household shelter floor	: glazed porcelain tiles
Balcony floor(where applicable)	: Structured Homogenous tiles with tile skirting (optional)

Fittings

Quality locksets
Water Closet suite
Vanity top wash basin at attached Bathroom/WC, wash basin for other Bathroom/WC (optional)
Bath/Shower mixer with shower set, tap mixer (optional)
Clothes Drying Rack

Services

Gas services and concealed water supply pipes
Concealed electrical wiring to lighting and power points (including water heater and air-conditioning points)
Television points
Telephone points

Important Notes

- 1) The Household Shelter is designed for use as civil defence shelter. The walls, ceiling, floor and door of the Household Shelter shall not be hacked, drilled, altered or removed.
- 2) Air-con panel in the main bedroom will not be provided.
- 3) Any unused or unoccupied open spaces in front of or nearby / adjacent to the flat units are not available for purchase and that the HDB will not entertain any requests from the flat owners to purchase and / or enclose the unused or unoccupied open spaces.

You are advised to visit HDB's website at www.hdb.gov.sg for information on renovation rules.

Disclaimer

- (i) All information, maps and plans in this brochure are the copyright of the HDB.
- (ii) The information provided in this brochure are not statements or representations of fact. They are not intended to form part of any offer or contract for the sale of the flats.
- (iii) Visual representations like pictures, art renderings, depictions, illustrations, photographs, drawings and other graphic representations and references are only artistic impressions. They are not representations of fact.
- (iv) The information on this project including but not limited to the dimensions, areas, plans, colour schemes, descriptions and specifications are subject to change or review without notice at HDB's sole discretion or if required by the competent authorities.
- (v) HDB may at any time, without any notice and at its sole discretion, change any aspect of this project, including but not limited to the omission, amalgamation, increasing or reducing the number of communal facilities, amenities, colour schemes, design features and specifications shown.
- (vi) HDB will not entertain any request for alteration of the layout or specifications of a flat, to suit individual needs.
- (vii) HDB does not warrant the accuracy of the information and will not be responsible in any way for any inaccuracy or omission of information in the brochure or for any loss suffered by any person as a result of relying on the information.
- (viii) The floor areas are scaled strata areas.
- (ix) The proposed facilities, their locations and surrounding land-use shown in the maps and plans are indicative only and subject to change or review. These facilities may include other ancillary uses allowed under URA's prevailing Development Control guidelines.
- (x) HDB reserves the right to use the void deck in any apartment block for facilities such as child care centres, elderly-related facilities, education centres, residents' committee centres, day activity centres and such other facilities as HDB shall deem fit.



Copyright © Housing & Development Board
All rights reserved. Printed in October 2013