

# WHAMPOA DEW

BUILD-TO-ORDER JAN 2013



*Homes for all your happily ever afters*

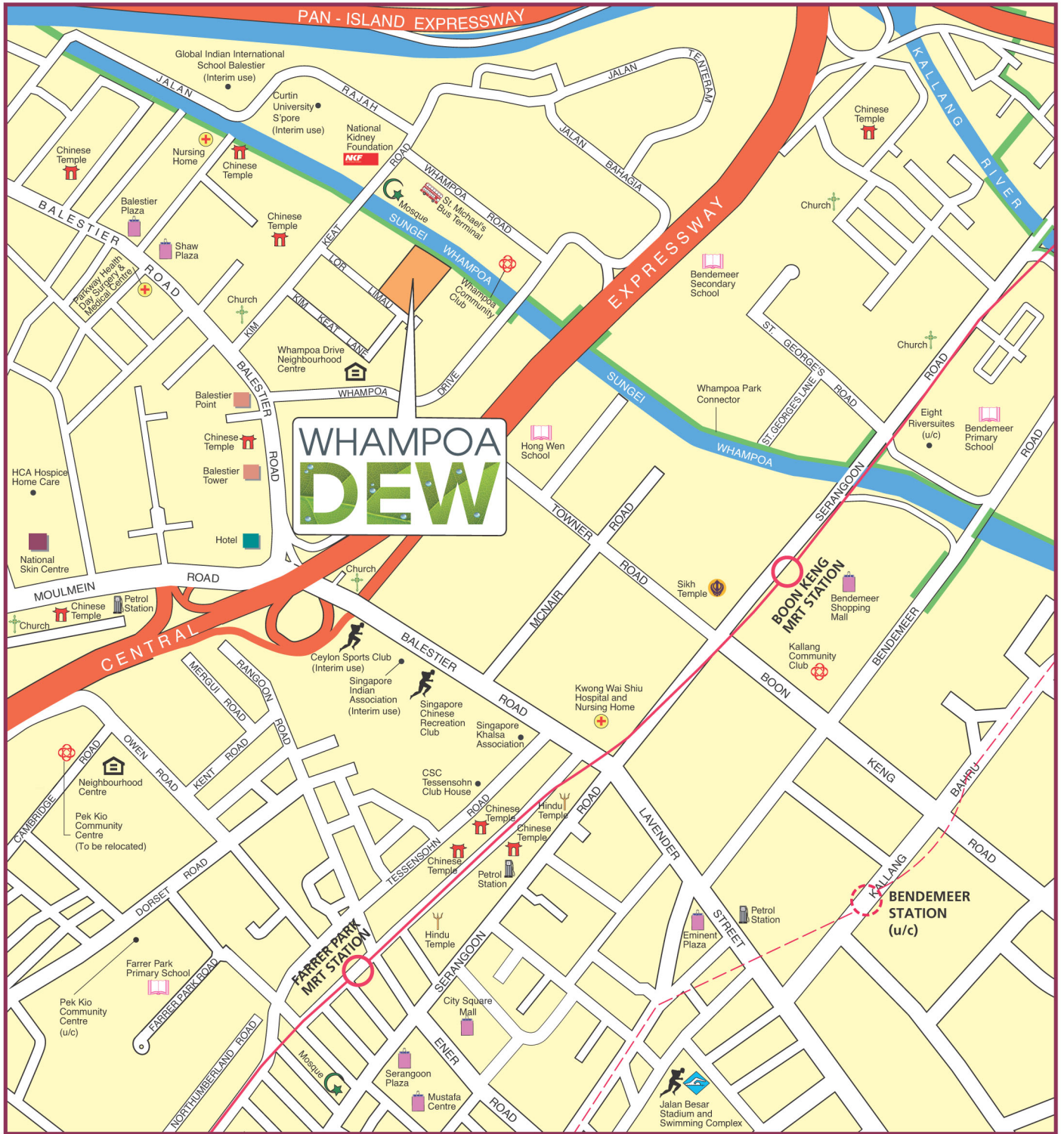


## Rejuvenation Awaits



Located along Lorong Limau, Whampoa Dew consists of a residential block with staggering height ranging from 30 to 40 storeys. Choose from 405 units of Studio Apartments and 4-room Standard Flats.

Whampoa Dew is located near Sungei Whampoa. The name Whampoa Dew is inspired by the water-themed elements found throughout the design of the precinct elements, including the roof design of the residential block.





**LEGEND:**

-  MRT Line & Station
-  MRT Line & Station (u/c)
- (u/c) Under Construction





*Artist's Impression*

## Community in Bloom

Enjoy a range of recreational facilities at your doorstep. The children can play in the children's playground while the adults and elderly work out at the adult and elderly fitness corners. Residents can relax and interact with their family and friends in the pergolas and resting shelters. Larger social gatherings can be held at the precinct pavilion.

Seniors can visit the Senior Activity Centre to make friends and engage in regular social activities.



# Delightful Homes

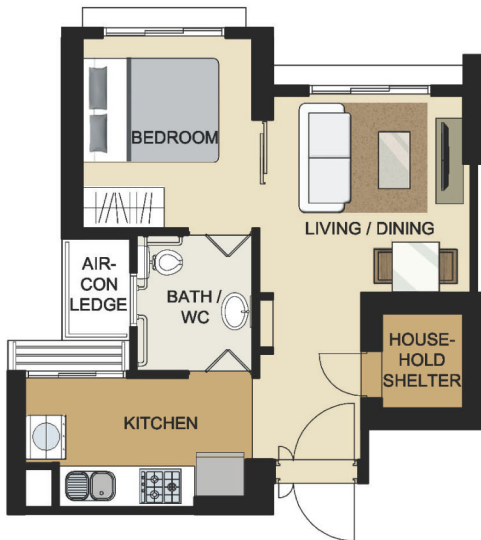
Whampoa Dew offers Studio Apartments and 4-room Standard Flats.

The 4-room flats come with three-quarter height windows in the living/ dining area and half-height windows in other rooms.

The Studio Apartments are designed specially to meet the needs of those 55 years old and above. Each Studio Apartment comes with a built-in kitchen cabinet with cooker hood and stove. Buyers can choose from two height options for the kitchen cabinet – default dimensions based on industry standard or lowered cabinets to suit the needs of wheelchair bound residents. For the convenience of residents, elderly-friendly fixtures are also provided within the units. These include grab bars to provide support, ramp at the unit entrance to assist movement, bigger switches and an alert alarm system.

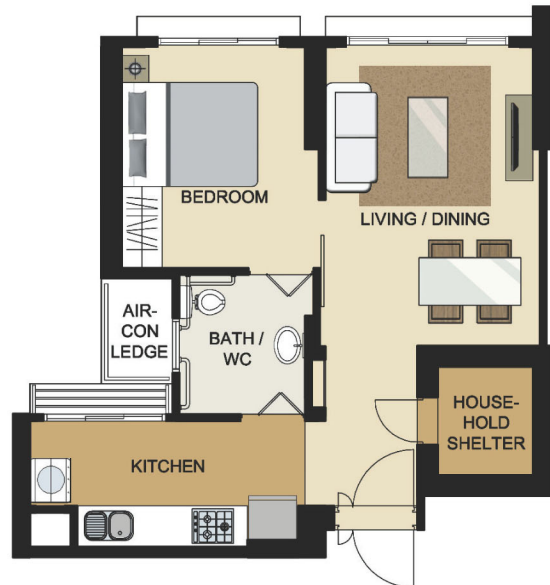


Move in hassle-free as each Studio Apartment will be in a ready-to-move-in condition. Each apartment will be furnished with a built-in wardrobe, floor tiles in the entire flat and wall tiles in the bathroom and kitchen. Three-quarter height windows are provided in the living/dining area and bedroom.



**LAYOUT IDEAS FOR  
STUDIO APARTMENT  
(TYPE A)**

APPROX. FLOOR AREA 37 sqm  
( Inclusive of Internal Floor Area 35 sqm and Air-con Ledge )



**LAYOUT IDEAS FOR  
STUDIO APARTMENT  
(TYPE B)**

APPROX. FLOOR AREA 47 sqm  
( Inclusive of Internal Floor Area 45 sqm and Air-con Ledge )

The 4-room flats come with floor finishes in the kitchen, household shelter, service yard and bathrooms. For added convenience, you may opt in to have floor finishes installed in the living/dining room and bedrooms of your selected flat. You may also opt in to have sanitary fittings in the bathrooms - wash basin, water tap and shower mixer. These sanitary fittings, together with internal doors, will be offered as a package. The cost of installing these optional components will be added to the selling price of the flat.



**LAYOUT IDEAS FOR  
4 ROOM**  
APPROX. FLOOR AREA 93 sqm  
( Inclusive of Internal Floor Area 90 sqm and Air-con Ledge )



**LEGEND**

- Studio Apartment Type A
- Studio Apartment Type B
- 4 - Room
- Linkway / Precinct Pavilion / Drop-Off Porch / Shelter / Pergola
- Future Social Community Facilities (FSCF) / Senior Activity Centre (SAC) at 1st storey
- Surrounding Buildings
- Reserved for / Existing Development
- Children Playground (PG) / Elderly Fitness Station (EFS) / Adult Fitness Station (AFS) /
- Utility Centre (UC) at 1st storey
- Electrical Substation (ESS)
- Open Space
- Carparking
- Drainage Reserve
- Driveway
- Air-well
- Staircase
- Centralised Refuse Chute
- X Lift
- Corridor
- X Service Bay

Block Number	Number of Storeys	Studio Apartment		4 Room	Total	Lift opens at
		( type A )	( type B )			
78	30 / 36 / 40	78	78	249	405	Every storey
<b>Total</b>		<b>78</b>	<b>78</b>	<b>249</b>	<b>405</b>	





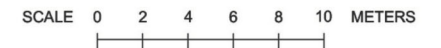
## BLOCK 78 (2ND TO 30TH STOREY FLOOR PLAN)

### LEGEND :

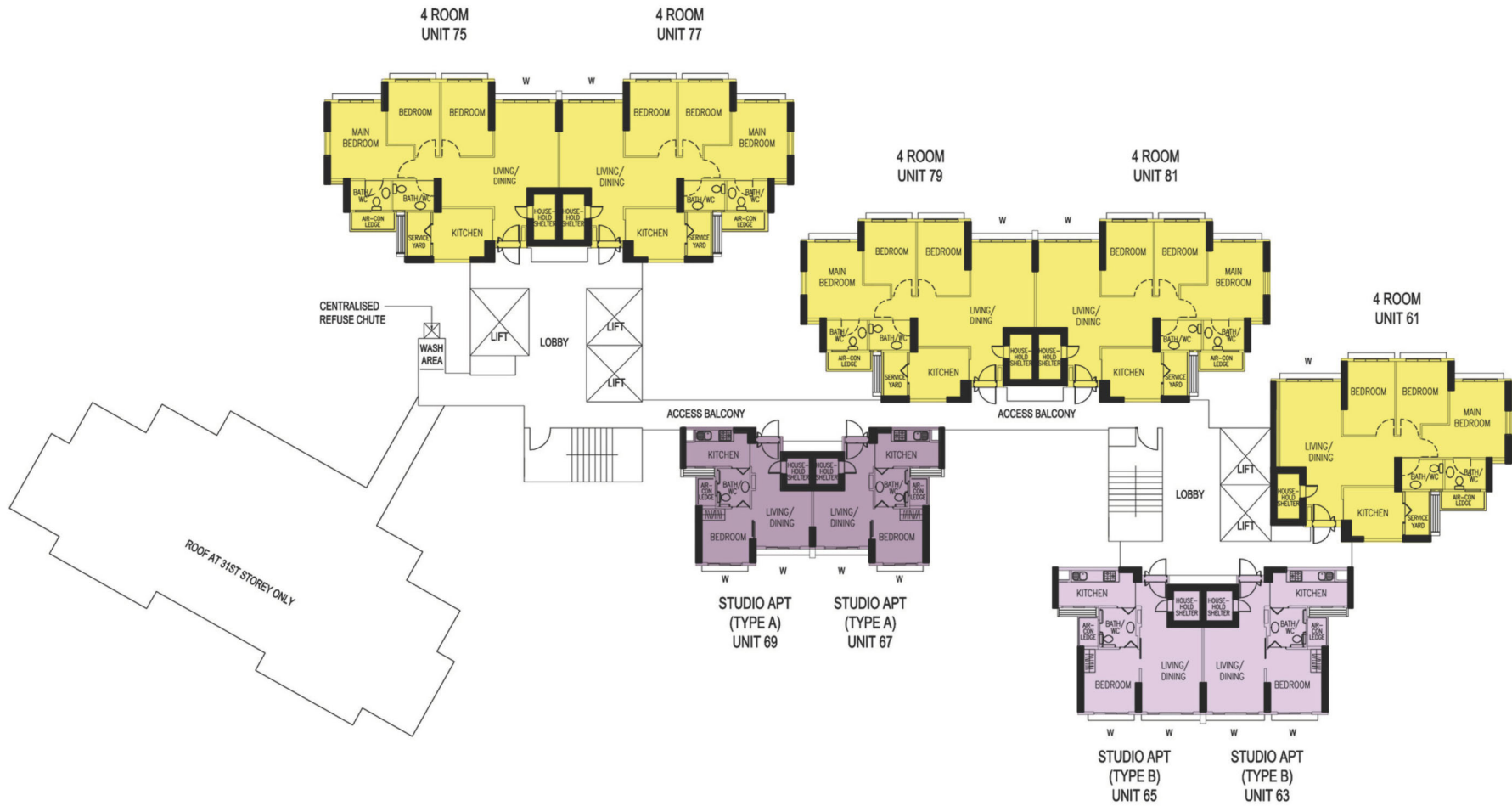
- STUDIO APARTMENT TYPE A
- STUDIO APARTMENT TYPE B
- 4 ROOM

W - THREE QUARTER HEIGHT WINDOW (APPROX. 500mm HIGH PARAPET WALL)  
UNLESS OTHERWISE INDICATED, ALL WINDOWS WILL BE STANDARD HEIGHT WINDOWS

The coloured floor plan is not intended to demarcate the boundary of the flat.







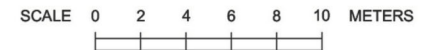
## BLOCK 78 (31ST TO 36TH STOREY FLOOR PLAN)

**LEGEND :**

- STUDIO APARTMENT TYPE A
- STUDIO APARTMENT TYPE B
- 4 ROOM

W - THREE QUARTER HEIGHT WINDOW (APPROX. 500mm HIGH PARAPET WALL)  
UNLESS OTHERWISE INDICATED, ALL WINDOWS WILL BE STANDARD HEIGHT WINDOWS

The coloured floor plan is not intended to demarcate the boundary of the flat.





## BLOCK 78 (37TH TO 40TH STOREY FLOOR PLAN)

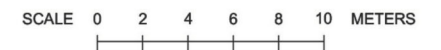
### LEGEND :

- STUDIO APARTMENT TYPE A
- STUDIO APARTMENT TYPE B
- 4 ROOM

W - THREE QUARTER HEIGHT WINDOW (APPROX. 500mm HIGH PARAPET WALL)

UNLESS OTHERWISE INDICATED, ALL WINDOWS WILL BE STANDARD HEIGHT WINDOWS

The coloured floor plan is not intended to demarcate the boundary of the flat.



# General Specifications For Whampoa Dew (Studio Apartment)

## Foundation

Piled foundations.

## Structure

Reinforced concrete structural framework with reinforced concrete slabs.

## Roof

Reinforced concrete roof slab with precast concrete secondary roofing.

## Walls

All external and internal walls are constructed with reinforced concrete/solid blocks/bricks with cement plastering/precast panels/precast lightweight concrete partitions.

## Windows

Aluminium framed windows with tinted glass.

## Doors

Entrance	:	decorative solid timber door and metal gate
Bedroom	:	laminated sliding timber door
Bathroom/WC	:	PVC folding door
Household Shelter	:	metal door

## Finishes

Ceiling	:	skim coated or plastered and painted
Kitchen/Bathroom/WC wall	:	ceramic tiles
Other Wall	:	skim coated or plastered and painted
Living/Dining/Bedroom floor	:	glazed porcelain tiles with timber skirting
Kitchen floor	:	glazed porcelain tiles
Bathroom/WC floor	:	ceramic tiles
Household Shelter floor	:	glazed porcelain tiles

## Fittings

Quality locksets  
Quality sanitary fittings  
Kitchen cabinets with cooker hood, gas hob and kitchen sink  
Built-in wardrobe  
Clothes Drying Rack

## Services

Gas services and concealed water supply pipes  
Concealed electrical wiring to lighting and power points (including water heater and air-conditioning points)  
Television points  
Telephone points

## Important Notes

- 1) The Household Shelter is designed for use as civil defence shelter. The walls, ceiling, floor and door of the Household Shelter shall not be hacked, drilled, altered or removed.
- 2) Air-con panel in the main bedroom will not be provided.
- 3) Any unused or unoccupied open spaces in front of or nearby / adjacent to the flat units are not available for purchase and that the HDB will not entertain any requests from the flat owners to purchase and / or enclose the unused or unoccupied open spaces.

You are advised to visit HDB's website at [www.hdb.gov.sg](http://www.hdb.gov.sg) for information on renovation rules.

# General Specifications For Whampoa Dew (4-Room)

## Foundation

Piled foundations.

## Structure

Reinforced concrete structural framework with reinforced concrete slabs.

## Roof

Reinforced concrete roof slab with precast concrete secondary roofing.

## Walls

All external and internal walls are constructed with reinforced concrete/solid blocks/bricks with cement plastering/precast panels/precast lightweight concrete partitions.

## Windows

Aluminium framed windows with tinted glass.

## Doors

Entrance	:	decorative solid timber door and metal gate
Bedroom	:	laminated semi-solid timber door (Type D9a) (optional)
Bathroom/WC	:	laminated semi-solid timber door (Type D9a) (optional)
Household Shelter	:	metal door
Service Yard	:	aluminium framed door with glass

## Finishes

Ceiling	:	skim coated or plastered and painted
Kitchen/Bathroom/WC wall	:	ceramic tiles
Other Wall	:	skim coated or plastered and painted
Living/Dining/Bedroom floor	:	polished porcelain tiles with timber skirting (optional)
Kitchen floor	:	glazed porcelain tiles
Bathroom/WC floor	:	ceramic tiles
Service Yard floor	:	glazed porcelain tiles with tile skirting
Household Shelter floor	:	glazed porcelain tiles

## Fittings

Quality locksets  
Water Closet suite  
Wash basin for Bathroom / WC (optional)  
Bath / Shower mixer with shower set, tap mixer (optional)  
Clothes Drying Rack

## Services

Gas services and concealed water supply pipes  
Concealed electrical wiring to lighting and power points (including water heater and air-conditioning points)  
Television points  
Telephone points

## Important Notes

- 1) The Household Shelter is designed for use as civil defence shelter. The walls, ceiling, floor and door of the Household Shelter shall not be hacked, drilled, altered or removed.
- 2) Air-con panel in the main bedroom will not be provided.
- 3) Any unused or unoccupied open spaces in front of or nearby / adjacent to the flat units are not available for purchase and that the HDB will not entertain any requests from the flat owners to purchase and / or enclose the unused or unoccupied open spaces.

You are advised to visit HDB's website at [www.hdb.gov.sg](http://www.hdb.gov.sg) for information on renovation rules.

## **Disclaimer**

- (i) All information, maps and plans in this brochure are the copyright of the HDB.
- (ii) The information provided in this brochure are not statements or representations of fact. They are not intended to form part of any offer or contract for the sale of the flats.
- (iii) Visual representations like pictures, art renderings, depictions, illustrations, photographs, drawings and other graphic representations and references are only artistic impressions. They are not representations of fact.
- (iv) The information on this project including but not limited to the dimensions, areas, plans, colour schemes, descriptions and specifications are subject to change or review without notice at HDB's sole discretion or if required by the competent authorities.
- (v) HDB may at any time, without any notice and at its sole discretion, change any aspect of this project, including but not limited to the omission, amalgamation, increasing or reducing the number of communal facilities, amenities, colour schemes, design features and specifications shown.
- (vi) HDB will not entertain any request for alteration of the layout or specifications of a flat, to suit individual needs.
- (vii) HDB does not warrant the accuracy of the information and will not be responsible in any way for any inaccuracy or omission of information in the brochure or for any loss suffered by any person as a result of relying on the information.
- (viii) The floor areas are scaled strata areas.
- (ix) The proposed facilities, their locations and surrounding land-use shown in the maps and plans are indicative only and subject to change or review. These facilities may include other ancillary uses allowed under URA's prevailing Development Control guidelines.
- (x) HDB reserves the right to use the void deck in any apartment block for facilities such as child care centres, elderly-related facilities, education centres, residents' committee centres and such other facilities as HDB shall deem fit.



© Copyright HDB  
All Rights Reserved  
Printed in Feb 2013