



Toa Payoh
Crest



Come Home To Sweet Treats

BUILD-TO-ORDER NOV 2012



Contemporary Living

Toa Payoh Crest is located at the junction of Toa Payoh Rise and Lorong 1 Toa Payoh. It comprises four 40-storey residential blocks of 1,007 units of Studio Apartments, 3- and 4-room Standard Flats.

Toa Payoh Crest is one of the tallest developments in Toa Payoh town.





LEGEND:

- MRT Line & Station
- Future Road North-South Expressway (NSE)
- Future MRT Line & Station

Scale 0 200 400 Metres
100 300 500





A multitude of facilities

Enjoy a range of recreational and communal activities in Toa Payoh Crest. Residents can play at the children's playgrounds, work out at the adult and elderly fitness stations, or relax at the shelters found within the central open space. The precinct pavilion is an ideal place for social gatherings. Alternatively, simply unwind or hone your gardening skills at the community garden at the rooftop garden on the multi-storey carpark.

Parents will appreciate the convenience of having a childcare centre as well as an education centre located in the development. A Senior Care and Activity Centre set up in this development will provide day care, dementia day care, day rehabilitation services, basic nursing services and other social services. A minimart and a Residents' Committee Centre are also provided here.

Delightful Homes



Toa Payoh Crest offers Studio Apartments, 3- and 4-room Standard Flats.

The 3- and 4-room flats come with three-quarter height windows in the living/dining area and half-height windows in the other rooms.

The 3- and 4-room flats are provided with floor finishes in the kitchen, household shelter, service yard and bathrooms. For added convenience, you may opt in to have floor finishes installed in the living/dining room and bedrooms of your selected flat. You may also opt in to have sanitary fittings in the bathrooms - wash basin, water tap and shower mixer. These sanitary fittings, together with internal doors, will be offered as a package. The cost of installing these optional components will be added to the selling price of the flat.

The Studio Apartments are designed specially to meet the needs of those 55 years old and above. Each Studio Apartment comes with a built-in kitchen cabinet with cooker hood and stove. Buyers can choose from two height options for the kitchen cabinet – default dimensions based on industry standard or lowered cabinets to suit the needs of wheelchair bound residents. For the convenience of residents, elderly-friendly fixtures are also provided within the units. These include grab bars to provide support, ramp at the unit entrance to assist movement, bigger switches and an alert alarm system.

Move in hassle-free as each Studio Apartment will be in a ready-to-move-in condition. Each apartment will be furnished with a built-in wardrobe, floor tiles in the entire flat and wall tiles in the bathroom and kitchen. Three-quarter height windows are provided in the living/dining area and bedroom.



LAYOUT IDEAS FOR STUDIO APARTMENT (TYPE A)

APPROX. FLOOR AREA 37 sqm
(Inclusive of Internal Floor Area of 35 sqm and Air-Con Ledge)



LAYOUT IDEAS FOR STUDIO APARTMENT (TYPE B)

APPROX. FLOOR AREA 47 sqm
(Inclusive of Internal Floor Area of 45 sqm and Air-Con Ledge)



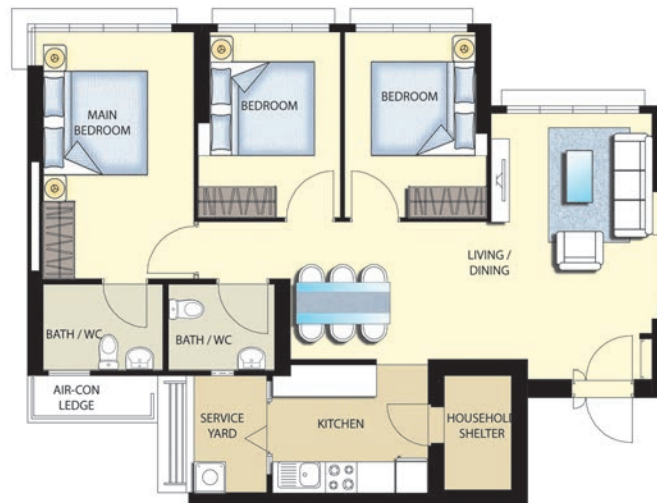
LAYOUT IDEAS FOR STUDIO APARTMENT (TYPE B)

APPROX. FLOOR AREA 47 sqm
(Inclusive of Internal Floor Area of 45 sqm and Air-Con Ledge)



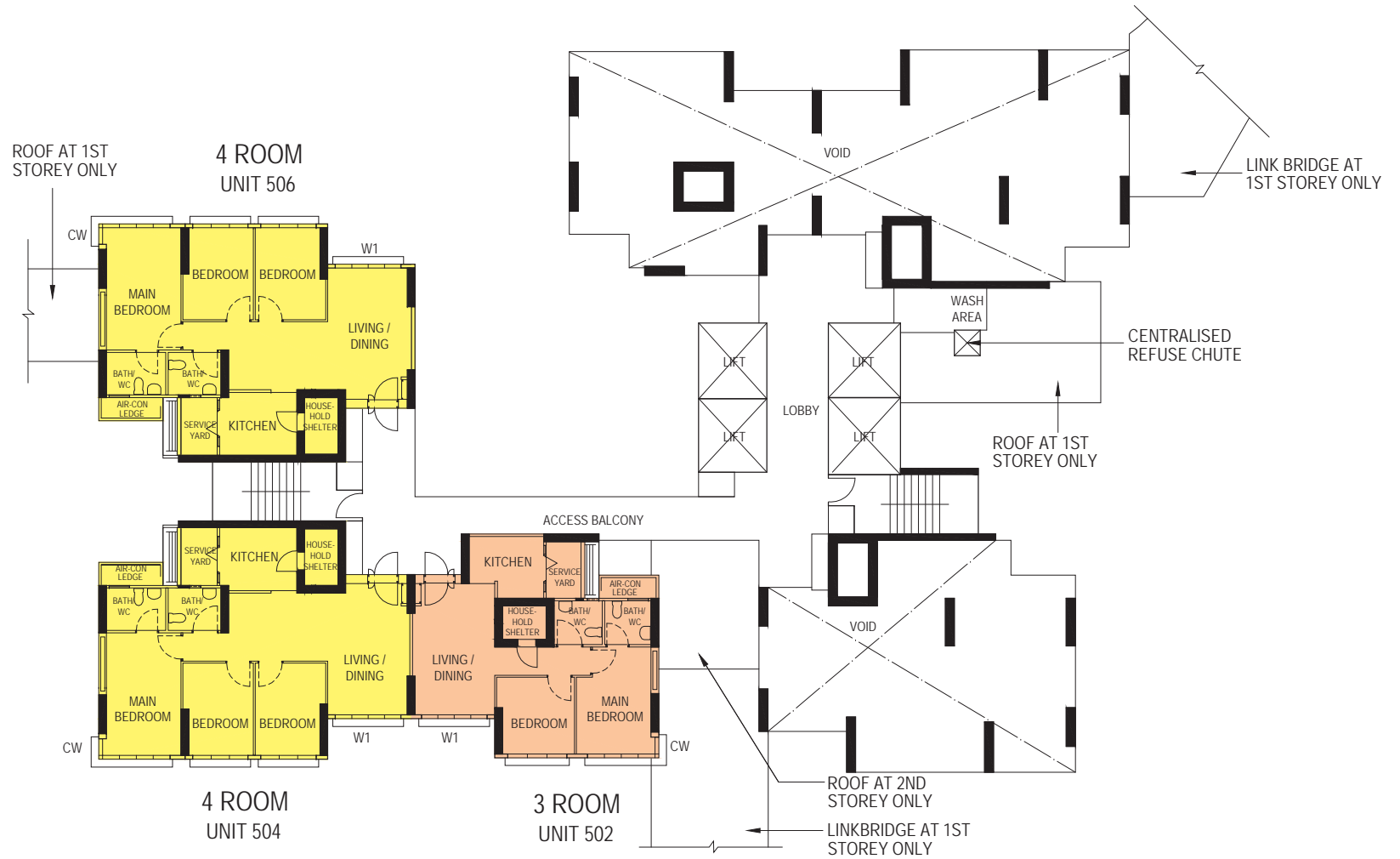
LAYOUT IDEAS FOR 3 ROOM

APPROX. FLOOR AREA 68 sqm
(Inclusive of Internal Floor Area of 65 sqm and Air-Con Ledge)



LAYOUT IDEAS FOR 4 ROOM

APPROX. FLOOR AREA 93 sqm
(Inclusive of Internal Floor Area of 90 sqm and Air-Con Ledge)



LEGEND :

- 3 ROOM
- 4 ROOM
- STUDIO APARTMENT (TYPE A)
- STUDIO APARTMENT (TYPE B)

2ND STOREY FLOOR PLAN BLOCK 130A

W1 - THREE QUARTER HEIGHT WINDOW (Approx. 500mm HIGH PARAPET WALL)

CW - STANDARD HEIGHT CORNER WINDOW

UNLESS OTHERWISE INDICATED, ALL WINDOWS WILL BE STANDARD HEIGHT WINDOWS

The coloured floor plan is not intended to demarcate the boundary of the flat.

SCALE 0 2 4 6 8 10 METRES



LEGEND :

- 3 ROOM
- 4 ROOM
- STUDIO APARTMENT (TYPE A)
- STUDIO APARTMENT (TYPE B)

3RD TO 22ND STOREY FLOOR PLAN BLOCK 130A

W1 - THREE QUARTER HEIGHT WINDOW (Approx. 500mm HIGH PARAPET WALL)

CW - STANDARD HEIGHT CORNER WINDOW

UNLESS OTHERWISE INDICATED, ALL WINDOWS WILL BE STANDARD HEIGHT WINDOWS

The coloured floor plan is not intended to demarcate the boundary of the flat.

SCALE 0 2 4 6 8 10 METRES



LEGEND :

- 3 ROOM
- 4 ROOM
- STUDIO APARTMENT (TYPE A)
- STUDIO APARTMENT (TYPE B)

23RD TO 40TH STOREY FLOOR PLAN BLOCK 130A

W1 - THREE QUARTER HEIGHT WINDOW (Approx. 500mm HIGH PARAPET WALL)

CW - STANDARD HEIGHT CORNER WINDOW

UNLESS OTHERWISE INDICATED, ALL WINDOWS WILL BE STANDARD HEIGHT WINDOWS

The coloured floor plan is not intended to demarcate the boundary of the flat.

SCALE 0 2 4 6 8 10 METRES



LEGEND :

- 3 ROOM
- 4 ROOM
- STUDIO APARTMENT (TYPE A)
- STUDIO APARTMENT (TYPE B)

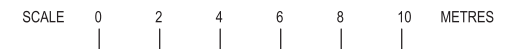
2ND TO 22ND STOREY FLOOR PLAN BLOCK 130B

W1 - THREE QUARTER HEIGHT WINDOW (Approx. 500mm HIGH PARAPET WALL)

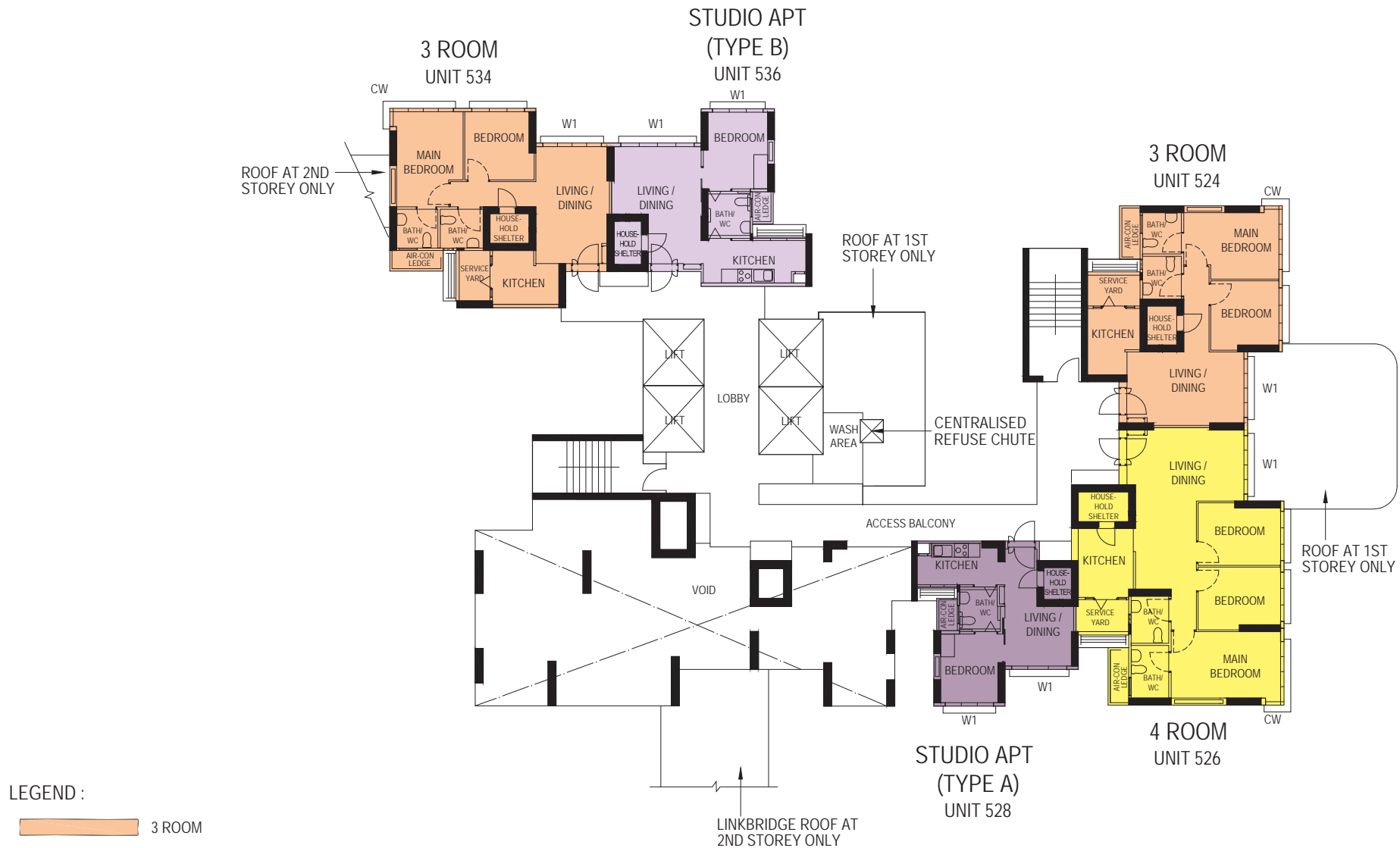
CW - STANDARD HEIGHT CORNER WINDOW

UNLESS OTHERWISE INDICATED, ALL WINDOWS WILL BE STANDARD HEIGHT WINDOWS

The coloured floor plan is not intended to demarcate the boundary of the flat.

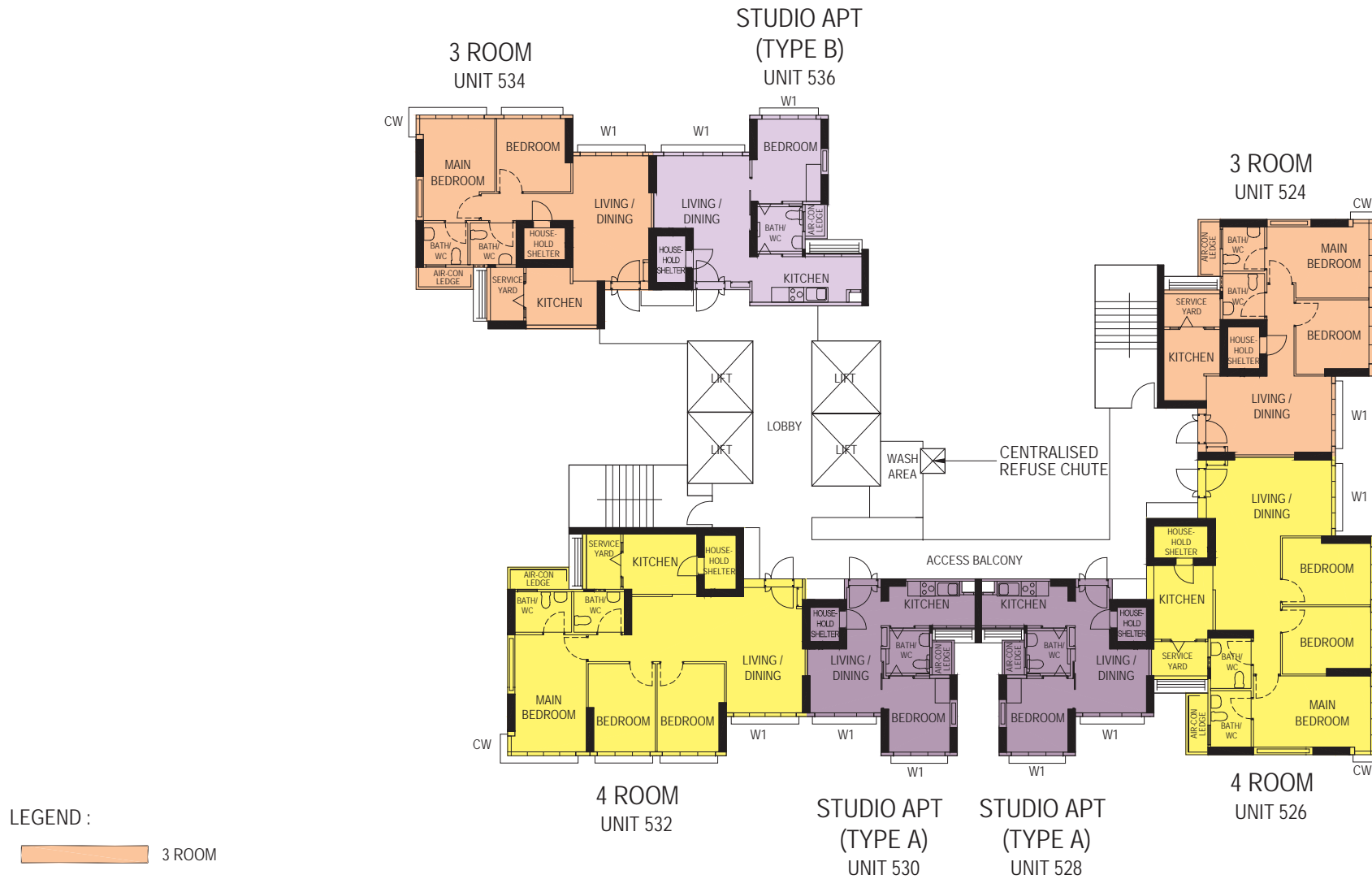






The coloured floor plan is not intended to demarcate the boundary of the flat.

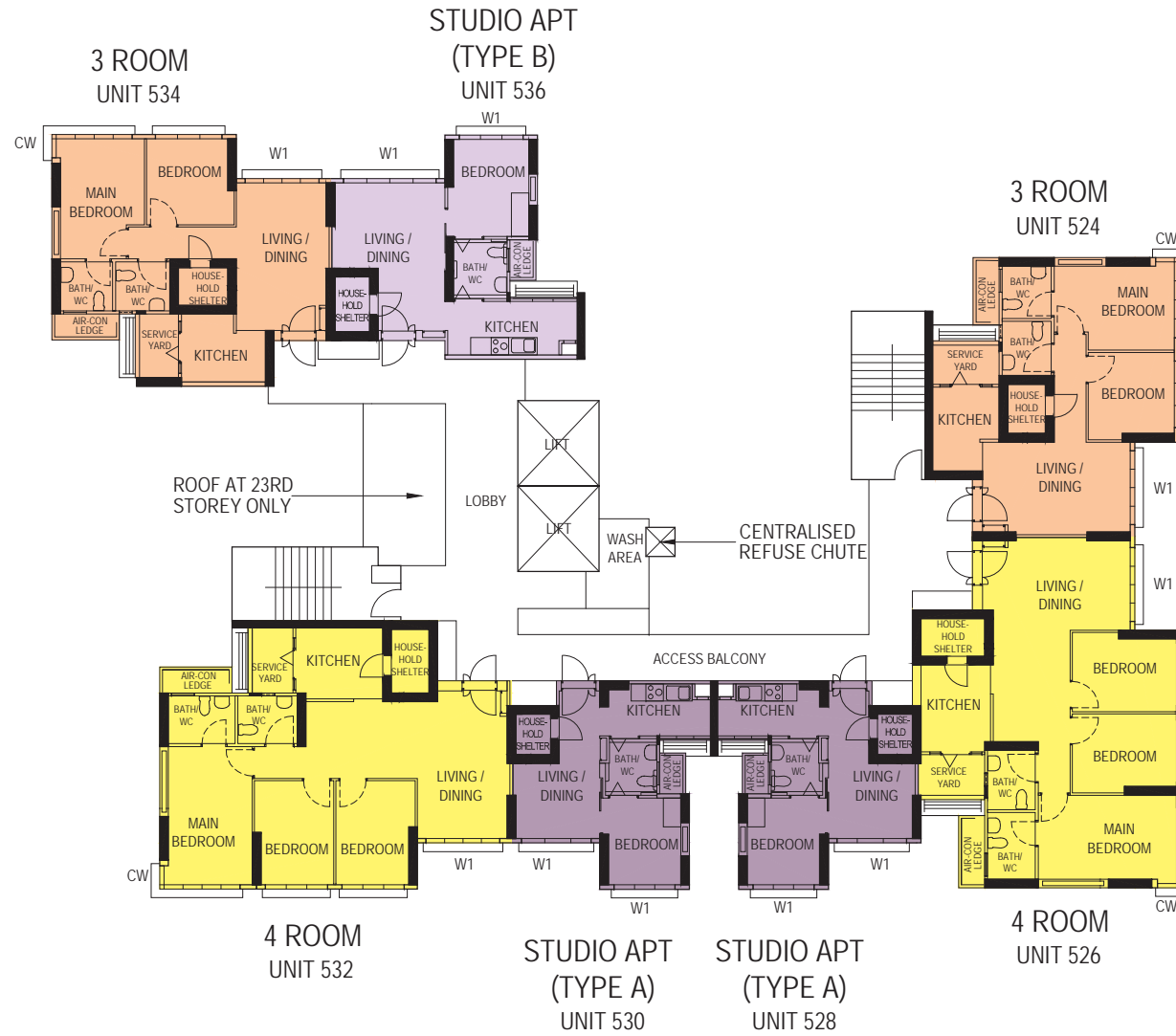
SCALE 0 2 4 6 8 10 METRES



4TH TO 22ND STOREY FLOOR PLAN BLOCK 131A

The coloured floor plan is not intended to demarcate the boundary of the flat.

SCALE 0 2 4 6 8 10 METRES



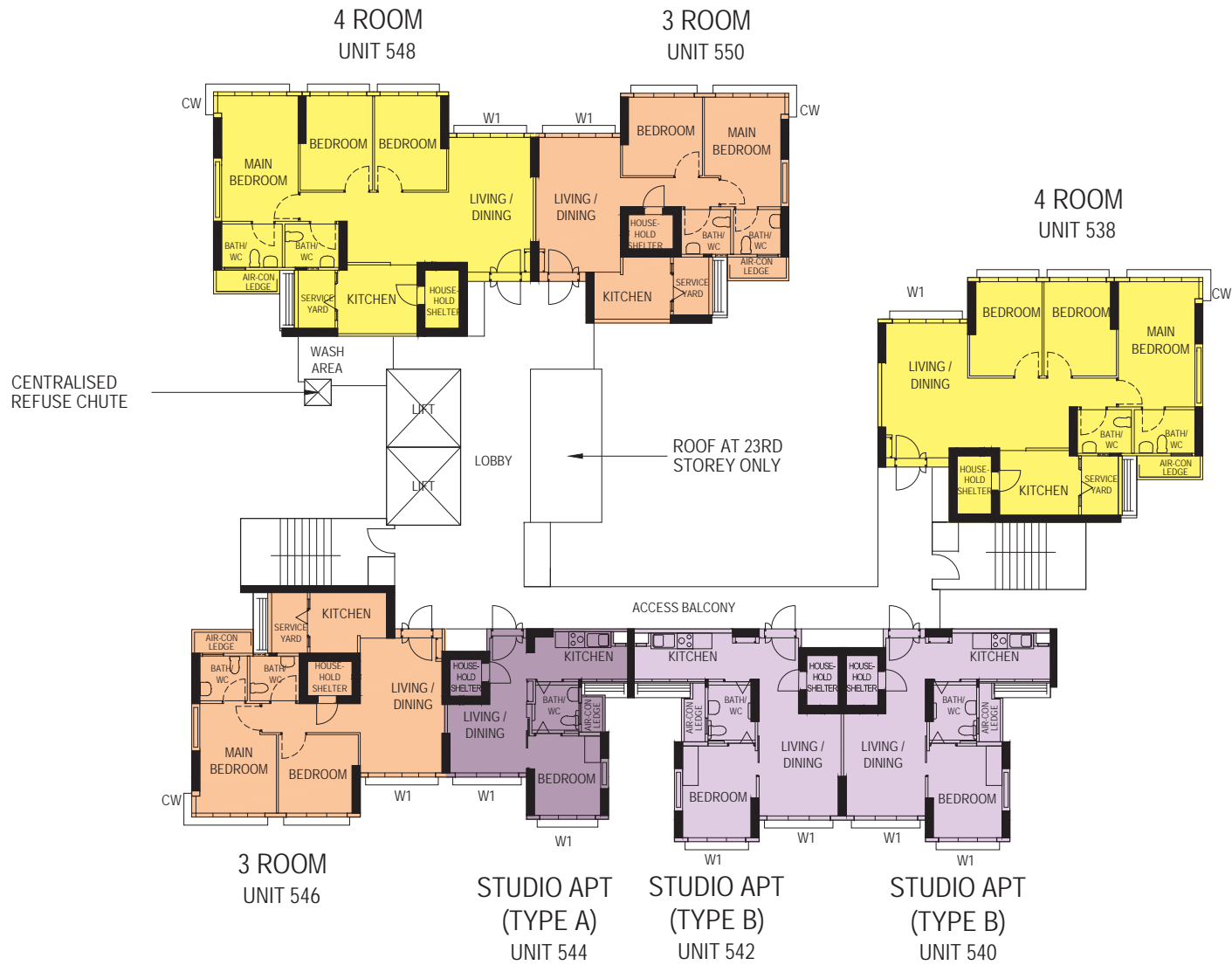
23RD TO 40TH STOREY FLOOR PLAN BLOCK 131A

The coloured floor plan is not intended to demarcate the boundary of the flat.

SCALE 0 2 4 6 8 10 METRES



The coloured floor plan is not intended to demarcate the boundary of the flat.



23RD TO 40TH STOREY FLOOR PLAN BLOCK 131B

The coloured floor plan is not intended to demarcate the boundary of the flat.

SCALE 0 2 4 6 8 10 METRES

General Specifications For Toa Payoh Crest Studio Apartment

Foundation

Piled foundations.

Structure

Reinforced concrete structural framework with reinforced concrete slabs.

Roof

Reinforced concrete roof slab with precast concrete secondary roofing.

Walls

All external and internal walls are constructed with reinforced concrete/solid blocks/bricks with cement plastering/precast panels/precast lightweight concrete partitions.

Windows

Aluminium framed windows with tinted glass.

Doors

Entrance	: decorative solid timber door and metal gate
Bedroom	: laminated sliding timber door
Bathroom/WC	: PVC folding door
Household Shelter	: metal door

Finishes

Ceilings	: skim coated or plastered and painted
Kitchen/Bathroom/WC walls	: ceramic tiles
Other Walls	: skim coated or plastered and painted
Living/Dining/Bedroom floor	: glazed porcelain tiles with timber skirting
Kitchen Floor	: glazed porcelain tiles
Bathroom/WC floor	: ceramic tiles
Household shelter floor	: glazed porcelain tiles

Fittings

Quality locksets
Quality sanitary fittings
Kitchen cabinets with cooker hood, gas hob and kitchen sink
Built-in wardrobe
Clothes Drying Rack

Services

Gas services and concealed water supply pipes
Concealed electrical wiring to lighting and power points (including water heater and air-conditioning points)
Television points
Telephone points

Important Notes

- 1) The Household Shelter is designed for use as civil defence shelter. The walls, ceiling, floor and door of the Household Shelter shall not be hacked, drilled, altered or removed.
- 2) Air-con panel in the main bedroom will not be provided.
- 3) Any unused or unoccupied open spaces in front of or nearby / adjacent to the flat units are not available for purchase and that the HDB will not entertain any requests from the flat owners to purchase and / or enclose the unused or unoccupied open spaces.

You are advised to visit HDB's website at www.hdb.gov.sg for information on renovation rules.

General Specifications For Toa Payoh Crest

3-Room and 4-Room

Foundation

Piled foundations.

Structure

Reinforced concrete structural framework with reinforced concrete slabs.

Roof

Reinforced concrete roof slab with precast concrete secondary roofing.

Walls

All external and internal walls are constructed with reinforced concrete/solid blocks/bricks with cement plastering/precast panels/precast lightweight concrete partitions.

Windows

Aluminium framed windows with tinted glass.

Doors

Entrance	: decorative solid timber door and metal gate
Bedrooms	: laminated semi-solid timber door (Type D9a) (optional)
Bathrooms/WC	: laminated semi-solid timber door (Type D9a) (optional)
Household Shelter	: metal door
Service Yard	: aluminium framed door with glass

Finishes

Ceilings	: skim coated or plastered and painted
Kitchen/Bathrooms/WC walls	: ceramic tiles
Other Walls	: skim coated or plastered and painted
Living/Dining/Bedrooms floor	: polished porcelain tiles with timber skirting (optional)
Kitchen floor	: glazed porcelain tiles
Bathrooms/WC floor	: ceramic tiles
Service Yard floor	: glazed porcelain tiles with tile skirting
Household shelter floor	: glazed porcelain tiles

Fittings

Quality locksets
Water Closet suite
Wash basin for Bathroom/WC (optional)
Bath/Shower mixer with shower set, tap mixer (optional)
Clothes Drying Rack

Services

Gas services and concealed water supply pipes
Concealed electrical wiring to lighting and power points (including water heater and air-conditioning points)
Television points
Telephone points

Important Notes

- 1) The Household Shelter is designed for use as civil defence shelter. The walls, ceiling, floor and door of the Household Shelter shall not be hacked, drilled, altered or removed.
- 2) Air-con panel in the main bedroom will not be provided.
- 3) Any unused or unoccupied open spaces in front of or nearby / adjacent to the flat units are not available for purchase and that the HDB will not entertain any requests from the flat owners to purchase and / or enclose the unused or unoccupied open spaces.

You are advised to visit HDB's website at www.hdb.gov.sg for information on renovation rules.

Disclaimer

- (i) All information, maps and plans in this brochure are the copyright of the HDB.
- (ii) The information provided in this brochure are not statements or representations of fact. They are not intended to form part of any offer or contract for the sale of the flats.
- (iii) Visual representations like pictures, art renderings, depictions, illustrations, photographs, drawings and other graphic representations and references are only artistic impressions. They are not representations of fact.
- (iv) The information on this project including but not limited to the dimensions, areas, plans, colour schemes, descriptions and specifications are subject to change or review without notice at HDB's sole discretion or if required by the competent authorities.
- (v) HDB may at any time, without any notice and at its sole discretion, change any aspect of this project, including but not limited to the omission, amalgamation, increasing or reducing the number of communal facilities, amenities, colour schemes, design features and specifications shown.
- (vi) HDB will not entertain any request for alteration of the layout or specifications of a flat, to suit individual needs.
- (vii) HDB does not warrant the accuracy of the information and will not be responsible in any way for any inaccuracy or omission of information in the brochure or for any loss suffered by any person as a result of relying on the information.
- (viii) The floor areas are scaled strata areas.
- (ix) The proposed facilities, their locations and surrounding land-use shown in the maps and plans are indicative only and subject to change or review. These facilities may include other ancillary uses allowed under URA's prevailing Development Control guidelines.
- (x) HDB reserves the right to use the void deck in any apartment block for facilities such as child care centres, elderly-related facilities, education centres, resident's committee centres and such other facilities as HDB shall deem fit.

