

**CANNINGHILL**  
PIERS



# A HOME WITHOUT PEER FOR A LIFE WITHOUT COMPARE

Jointly developed by CapitalLand Development (CLD) and City Developments Limited (CDL), there is no place quite like CanningHill Piers. On one side lies glittering Singapore River and its vibrant cafes, bars and restaurants. On the other side, the verdant tranquillity of Fort Canning Hill provides the perfect foil. Beyond its unmatched position overlooking two of Singapore's historic sites, this new luxury residence is set to be a landmark in its own right.

Bearing the bold signature of lauded architectural firm BIG—Bjarke Ingels Group, CanningHill Piers rises proudly above Clarke Quay. And as part of a transformative integrated precinct housing an inspired mix of F&B, retail, hotel and serviced residence too — truly, the very best of life is yours for the taking.

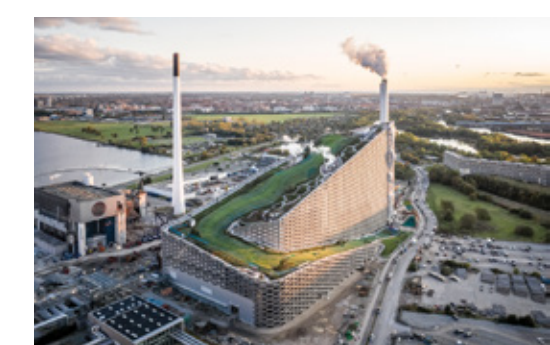
## BIG

To bring their vision to life, CLD and CDL have brought BIG—Bjarke Ingels Group on board. Acclaimed for their revolutionary approach and placemaking projects all over the world, this collaboration with BIG has resulted in a new paradigm of city living.



Bjarke Ingels,  
architect  
extraordinaire

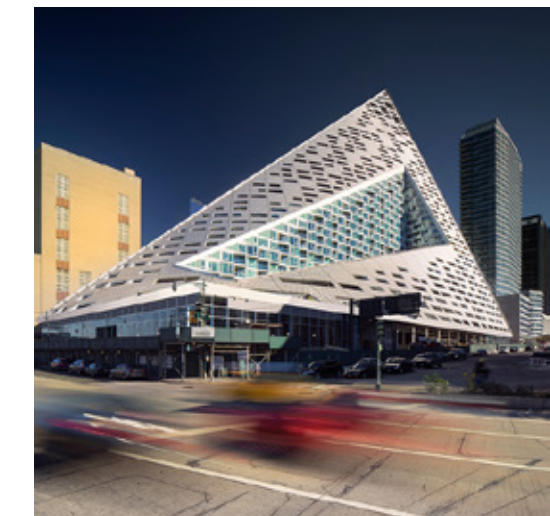
Artfully balancing the private and the public, the integrated precinct is designed for the enjoyment of the residents yet is just as welcoming to the community at large with diverse civic spaces and frontage that extends seamlessly onto the bustling river promenade.



CopenHill,  
Denmark



Lego House,  
Denmark



VIA 57 West,  
USA

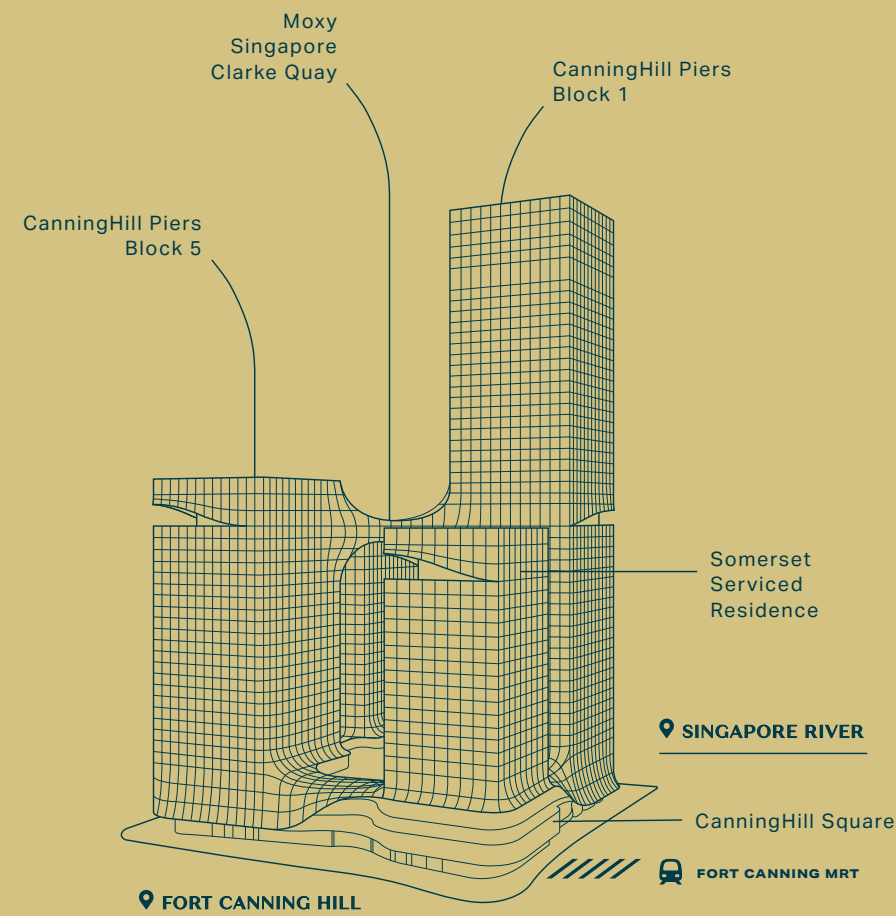
# A NEW VISION OF INTEGRATED LIVING

With three levels of recreational facilities above, three levels of F&B and retail below, as well as direct access to Fort Canning MRT, residents can look forward to conveniences of every kind. Feeling peckish? Simply take the lift down and take your pick of eateries. In the mood for an impromptu party? The gourmet supermarket at the basement has all you need to whip up some canapés, paired with wine or champagne as you please.

In addition to the two residential towers of CanningHill Piers, Moxy Singapore Clarke Quay and Somerset Serviced Residence take up the other two towers, completing this new landmark and social hub of the Singapore River district.



Seamlessly connected to tranquil Fort Canning Hill and vibrant Singapore River



CanningHill Piers (Luxury Residences)



CanningHill Square (F&B/Retail)



Somerset Serviced Residence



Moxy Singapore Clarke Quay (Hotel)



Images are for illustration only



# GO FAR WITH ALL THE RIGHT CONNECTIONS

## EASY CONNECTIVITY

- Fort Canning MRT (Downtown Line)
- Clarke Quay MRT (North East Line)
- River Taxi

## DINING & SHOPPING

- Clarke Quay
- Boat Quay
- Robertson Quay
- Orchard Road
- Marina Bay Sands

## ARTS & CULTURE

- National Museum of Singapore
- National Gallery Singapore
- Victoria Theatre and Concert Hall
- Esplanade
- ArtScience Museum

## PARKS & RECREATION

- Fort Canning Park
- Pearl's Hill City Park
- Gardens by the Bay

## WORK & LEARN

- Central Business District
- Marina Bay Financial District
- River Valley Primary School
- School of the Arts (SOTA)
- Nanyang Academy of Fine Arts (NAFA)
- Singapore Management University (SMU)
- LASALLE College of the Arts

## LEGEND

- EAST-WEST MRT LINE
- NORTH-SOUTH MRT LINE
- NORTH EAST MRT LINE
- CIRCLE MRT LINE
- DOWNTOWN MRT LINE
- THOMSON-EAST COAST MRT LINE



Every reasonable care has been taken in the preparation of the location map. The map is printed as at October 2021. For information on the permissible land use and density of sites around the housing project, the intending Purchaser may refer to the Master Plan available from the website of the Urban Redevelopment Authority at [www.ura.gov.sg](http://www.ura.gov.sg).



View from actual site,  
approx. Level 24

## REVEL IN THE PLEASURES OF A PRIME CITY LOCATION

### BY THE HILL



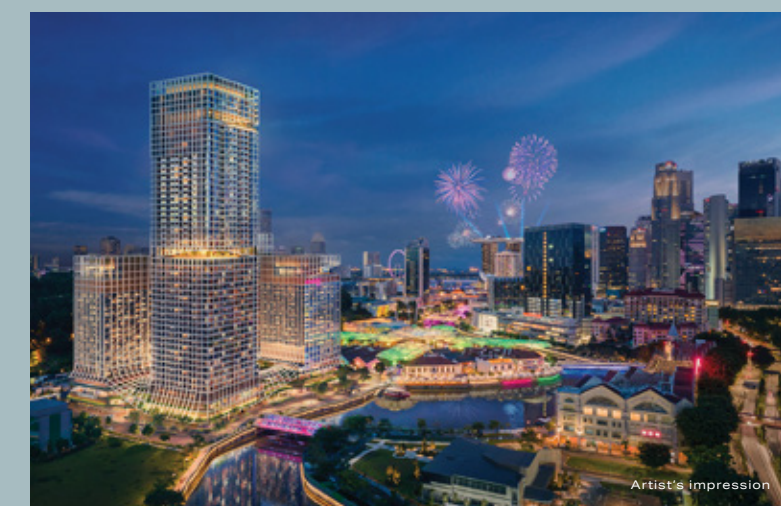
Across the road from CanningHill Piers stands Fort Canning Hill. Besides its ancient artefacts and historical gardens, you are just as likely to come upon lively festivals, concerts and performances. And whether nature lover or fitness buff, the 18 hectares of rolling greens offer you much to explore and conquer.

### BY THE RIVER



It's easy to slake your thirst for life when your home is along the bustling Singapore River, its banks lined with all manner of cafes, bars, clubs and restaurants as well as arts spaces. Clarke Quay is literally at your doorstep, and a short stroll takes you to Boat Quay or Robertson Quay in no time.

### BY THE CITY



From the museums and theatres of the Civic District, to the endless shopping and entertainment options of Orchard Road and Marina Bay Sands, everything that's exciting in the city is mere minutes away. Or if work calls, the Central Business District and the Marina Bay Financial District are easily reached by boat, car or MRT.

# WHERE REST COMES EASY



For illustration only

Take it easy with a home that always has your needs in mind. Choose from 1-bedroom to 5-bedroom premium units, expansive sky suites and a super penthouse that is the epitome of exclusivity.

On top of thoughtful layouts that amplify the sense of space, clever design touches give you even more room to play with. The 1-bedroom, 1-bedroom+study and 3-bedroom premium units feature a versatile pull-out counter that can serve as an extended food preparation area, dining table or work-from-home station. In the master bedroom wardrobe, a special compartment holds and organises your accessories so you can compose your outfit of the day with flair.

Those who love to cook will delight in the Italian-designed and made Ernestomeda kitchen system. Designer brand Miele provides the hood, hob and oven while the integrated fridge and washer-dryer are from De Dietrich. In the bathroom, premium wares and fittings from Gessi and Laufen create an elegant oasis of rest. Revel in details like the sleek wall-mounted taps and exquisite engineered stone vanities with integrated sink, as well as ample storage that makes room for your luxury toiletries and more.

Bask in a spaciousness rare for city homes



For illustration only

Work from home, elevated



For illustration only

Space to cook and entertain in style



For illustration only

Designer wares and fittings create an elegant oasis of rest

## EVERY NEED ANTICIPATED, EVERY BROW SMOOTHED



### Premier Residential Services

Completing your life of ease, our team of Residential Hosts are on hand to provide seamless assistance. From your day-to-day needs such as arranging for laundry and housekeeping, and transport bookings; to special occasions like catering for parties, restaurant reservations, and more\* — it's all taken care of.

\*Selected services are chargeable. Terms and conditions apply.



### Your Future-Ready Home

Outfitted with the Smart HomeHub, your home is poised for the integration of new technologies that make life easier, along with greater peace of mind. Pre-installed with the Smart Home app, the provided Smart Tablet Console puts all your smart home devices at your fingertips. The app can be installed on your mobile device too.

### SMART HOME



#### Smart Air Con

Hot day? Turn on the air conditioning remotely and have the home cooled in preparation for your return.



#### Smart Siren Alarm

The Smart HomeHub device sounds the alarm in the event of any security breach to deter intruders. You will also receive an alert.



#### Smart Lighting

Schedule the lights to come on automatically or check if you have forgotten to turn them off.



#### Smart Motion Sensor

Lights up the foyer automatically for a warm welcome home. The lights also come on when intruders are detected.



#### Smart Lock

The convenience of locking or unlocking the door remotely. You can also use PIN, biometrics, key or access card.



#### Smart Smoke Detector

Be promptly alerted so you can call for help if no one is at home to investigate.



#### Smart Video Doorbell

Get notified when someone is at the door, so you can see who is paying a visit or communicate with them.



#### Smart Voice Control/Speaker

Handsfree control of your smart home devices. Voice assistant also lets you ask about the news, weather, traffic; set reminders, play music, and more.



#### Smart Surveillance

Select units enjoy the added security of remote surveillance with an IP camera at the private lift lobby.



#### Smart Energy Monitoring

Easily keep track of your household electricity consumption to keep up sustainable habits.

### SMART COMMUNITY



#### Smart Booking/Payment

Check on the availability and pay for the booking of facilities. Then check in easily with a QR code.



#### Smart Invite

Pre-register your visitors and generate a QR invite to allow them easy entry to the development.



#### Smart Parcel

Parcel station sized to accept packages as well as letters, and sends you an alert to retrieve them.



#### Smart Audio Video Intercom

Lets visitors announce their arrival at the lift lobby so you can let them in with a simple tap.



#### Smart Biometric Access

Enjoy contactless access to lift lobbies and other communal areas with the facial recognition system.



#### Smart Car Wash Bay Monitor

Check if the car wash bays are available and minimise time spent waiting for a spot.



Two well-appointed club lounges at your disposal



An unforgettable setting for gatherings and parties

**L45**  
CANNINGHILL  
SKY

**WELCOME  
TO YOUR  
PRIVATE CLUB IN  
THE SKY**

- 01 Sky Deck
- 02 Sky Mist
- 03 Sky Hammocks
- 04 Sky Garden
- 05 Sky Arena
- 06 Sky Club
- 06a) Club Lounge 1
- 06b) Club Lounge 2
- 07 Sky Retreat



Entertain in style in an unforgettable setting high above the city. From intimate tête-à-têtes to soirées for dozens of guests, the myriad spaces here accommodate all with panache. Conceived as your private club in the sky, the clubhouse gives you the pick of two well-appointed lounges. With a kitchenette as well as an island counter that can be easily transformed into a bar, feel free to bring in your favourite mixologist.

**L24**  
CANNINGHILL  
CLUB

---

# SOAK IN THE VIEWS AND THAT TOP OF THE WORLD FEELING

The tranquillity you seek is surprisingly easy to find at this stunning sky bridge. Spanning two towers and filled with wellness and relaxation facilities from end to end, each of its three zones has a distinct theme and distinctive views too.

Start your day with brisk laps in the Infinity Lap Pool, and wind down at the Infinity Lounge Pool come sunset, marvelling at the changing colours of the skies. The Spa Pool and Floating Lounge offer even more therapeutic respite. At the Yoga Deck or the Sky Gym and Power Gym, set your eyes on the horizon and push on to a new record.



Find yourself lingering  
at the Infinity Lounge Pool



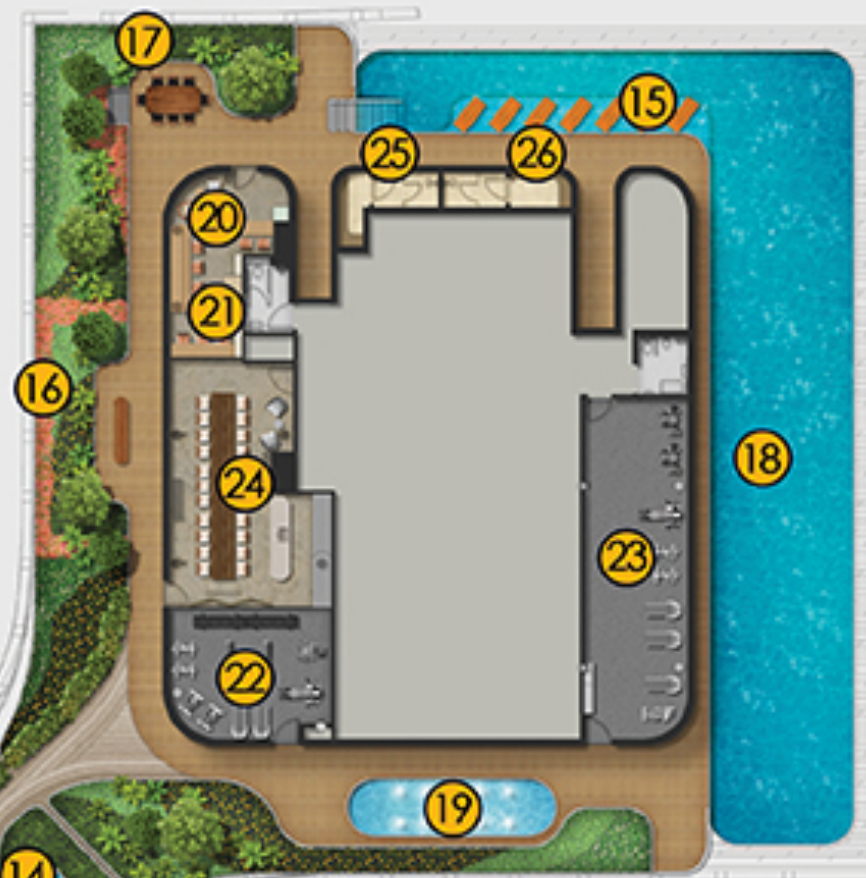
Gym or pool, work out to captivating views all around



The spacious Sky Gourmet easily accommodates your large circle of friends



Gather your friends and family for a good time over good food. The Sky Gourmet dining room is fully equipped with an induction hob, oven, fridge and wine chiller, and ready for your culinary explorations. Or light up the fire over at the Gourmet Grill for a barbeque cookout complete with city views.



- SKY OASIS**
- 10 Aqua Terrace
- 11 Spa Pool
- 12 Horizon Vista
- 13 Infinity Lounge Pool
- 14 Floating Lounge
  
- HILL RESORT**
- 15 Aqua Lounge
- 16 Hill Vista Lounge
- 17 Gourmet Grill
- 18 Infinity Lap Pool
- 19 Kids' Pool
- 20 Residential Services Reception
- 21 Flexi Lounge
- 22 Power Gym
- 23 Sky Gym
- 24 Sky Gourmet
- 25 Male Steam Room (With Shower)
- 26 Female Steam Room (With Shower)



- CITY SANCTUARY**
- 01 Yoga Deck
- 02 City Vista Lounge
- 03 Forest Swing
- 04 Play Mounds
- 05 Bay Vista Lounge
- 06 Wellness Room
- 07 Meditation Room
- 08 Function Room
- 09 Flexi Pods

If you need a quiet spot to think or to pen down your thoughts, there's always the Flexi Lounge or the Flexi Pods, both equipped with WiFi and charging points. Housing a co-working space, the Flexi Lounge is also where the Residential Services Reception is located so assistance is readily on hand. On occasions when you need some private time, simply check in to the Flexi Pods designed for privacy and comfort.



An airy co-working space to spark fresh ideas



Conduct your affairs in private at the cosy Flexi Pods



- 01 Hammock Play
- 02 Splash Play
- 03 Balance Walk
- 04 Nest Play
- 05 Rope Climb
- 06 Bouldering Wall
- 07 Ladder Play
- 08 Outdoor Jogging Track

- A Residential Guardhouse (L1)
- B Residential Bin Centre (B1)
- C Common Bin Centre (B1)
- D Residential Genset (B1)
- E Carpark Genset (B1)
- F Residential Carpark Entry/ Exit (L1)
- G Commercial/ Hotel Carpark Entry/ Exit (L1)
- H Main Development Drop-Off (L1)
- I Secondary Drop-Off (L1)

- Residential Water Tank (Roof)
- Residential Substation (B1)
- Carpark Ventilation (L1)
- Carpark Ventilation (L2)
- Serviced Residence Cooling Tower (Roof)
- Hotel Cooling Tower (Roof)

The renderings shown here are for illustrative purposes only. The shading and outline of the unit types only apply to typical units from Level 8 to 23. The boundary lines of the units set out here are not to be taken as a factual representation of the actual units. Kindly refer to the approved building plans for the actual unit outline/boundary lines.

# YOUR PERFECT HOME AWAITS

1 CLARKE QUAY, SINGAPORE 179882

UNIT/ FLOOR	01	02	03	04	05	06	07	08	09	10	11
48		AS4(p)	AS3(p)	AS2(p)	BS2(p)	A1(p)	PH1 (#48-08)				
47	SS1(#47-01)	AS4	AS3	AS2	BS2	A1	SS2 (#47-08)				
46	SS1(#46-01)	AS4	AS3	AS2	BS2	A1	SS2 (#46-08)				
CANNINGHILL SKY											
45											
44	EP1	BS1	AS3	AS2	BS2	A1	C1	B1	A3	DP1	
43	EP1	BS1	AS3	AS2	BS2	A1	C1	B1	A3	DP1	
42	EP1	BS1	AS3	AS2	BS2	A1	C1	B1	A3	DP1	
41	EP1	BS1	AS3	AS2	BS2	A1	C1	B1	A3	DP1	
40	EP1	BS1	AS3	AS2	BS2	A1	C1	B1	A3	DP1	
39	EP1	BS1a	AS3a	AS2a	BS2a	A1	C1a	B1	A3	DP1	
38	EP1	BS1a	AS3a	AS2a	BS2a	A1	C1a	B1	A3	DP1	
37	EP1	BS1a	AS3a	AS2a	BS2a	A1	C1a	B1	A3	DP1	
36	EP1	BS1a	AS3a	AS2a	BS2a	A1	C1a	B1	A3	DP1	
35	EP1	BS1a	AS3a	AS2a	BS2a	A1	C1a	B1	A3	DP1	
34	EP1	BS1a	AS3a	AS2a	BS2a	A1	C1a	B1	A3	DP1	
33	EP1	BS1a	AS3a	AS2a	BS2a	A1	C1a	B1	A3	DP1	
32	EP1	BS1a	AS3a	AS2a	BS2a	A1	C1a	B1	A3	DP1	
31	EP1	BS1a	AS3a	AS2a	BS2a	A1	C1a	B1	A3	DP1	
30	EP1	BS1a	AS3a	AS2a	BS2a	A1	C1a	B1	A3	DP1	
29	EP1	BS1a	AS3a	AS2a	BS2a	A1	C1a	B1	A3	DP1	
28	EP1	BS1a	AS3a	AS2a	BS2a	A1	C1a	B1	A3	DP1	
27	EP1	BS1a	AS3a	AS2a	BS2a	A1	C1a	B1	A3	DP1	
26	EP1	BS1a	AS3a	AS2a	BS2a	A1	C1a	B1	A3	DP1	
25	EP1	BS1a	AS3a	AS2a	BS2a	A1	C1a	B1	A3	DP1	

L3  
CANNINGHILL  
GARDEN

## ALL-WEATHER FUN FOR ALL IN THE FAMILY

With its rugged landscaping and open-air fitness facilities, catch some Vitamin D as you catch your breath in between exercises here. Test your limits at the Bouldering Wall or the Rope Climb, beat the clock at the Outdoor Jogging Track. Get the kids in on the action too and swap their e-games for some healthy fun, for which child could resist some Splash Play?

Run for leisure or get competitive at the 300-metre Outdoor Jogging Track



Myriad rugged facilities for those who relish a challenge

5 CLARKE QUAY, SINGAPORE 179884

UNIT/ FLOOR	15	16	17	18	19	20	21	22	23	24	25	26	27	UNIT/ FLOOR
CANNINGHILL CLUB														
24														24
23	DP2(p)	BS1a(p)	AS3a(p)	AS2a(p)	BS2a(p)	A1(p)	B1(S)	AS5	A3	AS7	DP3(p)			23
22	DP2	BS1a	AS3a	AS2a	BS2a	A1	B1(S)	AS5	A3	AS7	DP3	AS1	AS6	22
21	DP2	BS1a	AS3a	AS2a	BS2a	A1	B1(S)	AS5	A3	AS7	DP3	AS1	AS6	21
20	DP2	BS1a	AS3a	AS2a	BS2a	A1	B1(S)	AS5	A3	AS7	DP3	AS1	AS6	20
19	DP2	BS1a	AS3a	AS2a	BS2a	A1	B1(S)	AS5	A3	AS7	DP3	AS1	AS6	19
18	DP2	BS1a	AS3a	AS2a	BS2a	A1	B1(S)	AS5	A3	AS7	DP3	AS1	AS6	18
17	DP2	BS1a	AS3a	AS2a	BS2a	A1	B1(S)	AS5	A3	AS7	DP3	AS1	AS6	17
16	DP2	BS1a	AS3a	AS2a	BS2a	A1	B1(S)	AS5	A3	AS7	DP3	AS1	AS6	16
15	DP2	BS1a	AS3a	AS2a	BS2a	A1	B1(S)	AS5	A3	AS7	DP3	AS1	AS6	15
14	DP2	BS1a	AS3a	AS2a	BS2a	A1	B1(S)	AS5	A3	AS7	DP3	AS1	AS6	14
13	DP2	BS1a	AS3a	AS2a	BS2a	A1	B1(S)	AS5	A3	AS7	DP3	AS1	AS6	13
12	DP2	BS1a	AS3a	AS2a	BS2a	A1	B1(S)	AS5	A3	AS7	DP3	AS1	AS6	12
11	DP2	BS1a	AS3a	AS2a	BS2a	A1	B1(S)	AS5	A3	AS7	DP3	AS1	AS6	11
10	DP2	BS1a	AS3a	AS2a	BS2a	A1	B1(S)	AS5	A3	AS7	DP3	AS1	AS6	10
09	DP2	BS1a	AS3a	AS2a	BS2a	A1	B1(S)	AS5	A3	AS7	DP3	AS1	AS6	09
08	DP2	BS1a	AS3a	AS2a	BS2a	A1	B1(S)	AS5	A3	AS7	DP3	AS1	AS6	08
07	DP2	BS1a	AS3a	AS2a	BS2a	A1	B1(S)	AS5	A3	AS7	DP3	AS1	AS6	07
06	DP2	BS1a	AS3a	AS2a	BS2a	A1	B1(S)	AS5	A3	AS7	DP3	AS1	AS6	06
05	DP2	BS1a	AS3a	AS2a	BS2a	A1	B1(S)	AS5	A3	AS7	DP3	AS1	AS6	05
04	DP2	BS1a	AS3a	AS2a	BS2a	A1	B1(S)	AS5	A3	AS7	DP3	AS1	AS6	04
CANNINGHILL GARDEN														
03														03

1-BEDROOM
1-BEDROOM + STUDY
2-BEDROOM
2-BEDROOM + ENSUITE STUDY
2-BEDROOM + STUDY
3-BEDROOM
3-BEDROOM PREMIUM
4-BEDROOM PREMIUM
5-BEDROOM PREMIUM
SKY SUITE
SUPER PENTHOUSE

For actual unit orientation and stacking, please refer to storey key plans.



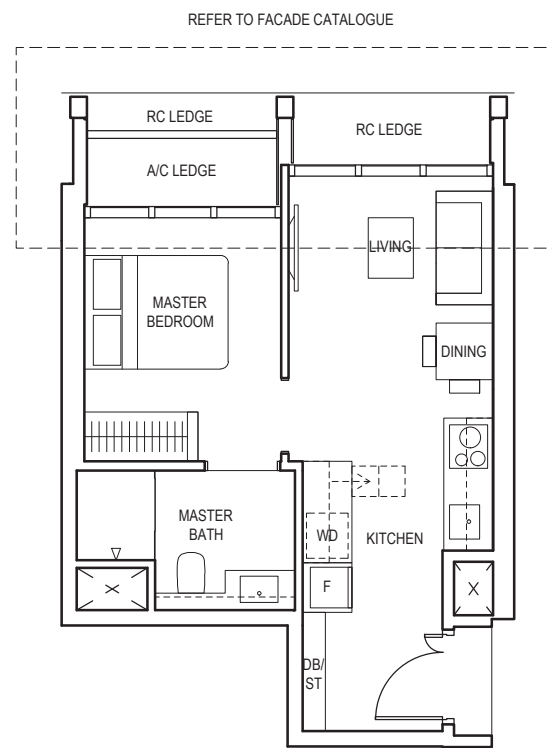
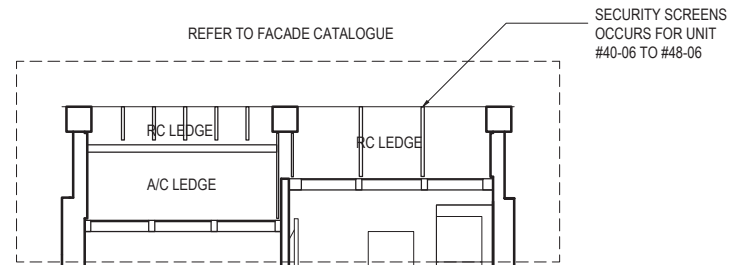
Scan to view  
Facade  
Catalogue and  
Specifications

# 1-BEDROOM

## TYPE A1

38 sq m / 409 sq ft

BLK 1  
 #04-06 to #22-06  
 #25-06 to #44-06  
 #46-06 to #47-06



**LEGEND (WHERE APPLICABLE)**  
 DB Distribution Board WD Washer cum Dryer W/D Washer and Dryer F Fridge DW Dishwasher WIW Walk-In Wardrobe  
 WC Water Closet ST Storage HS Household Shelter TB Tallboy CH Wine Chiller

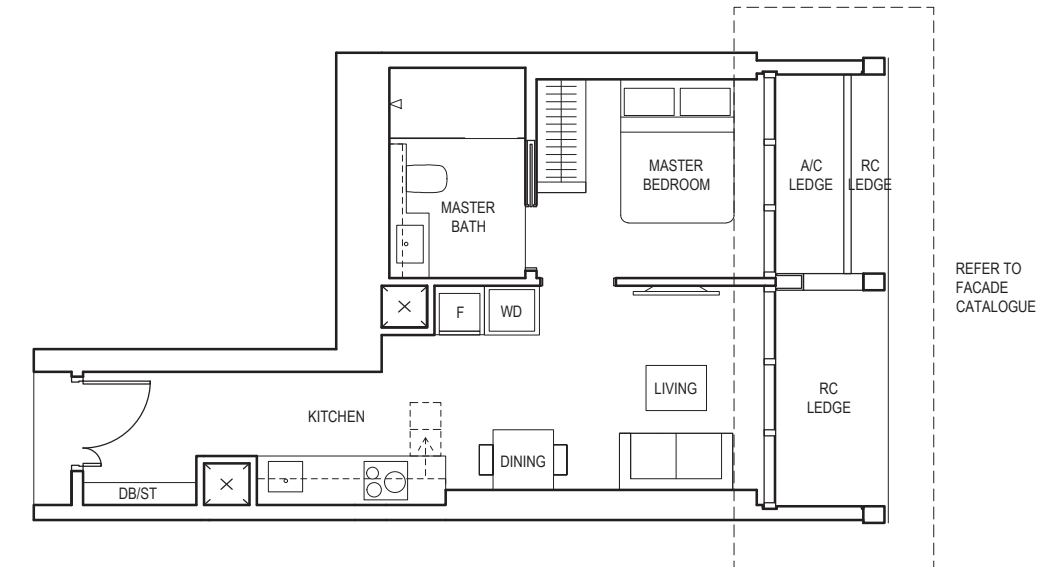
Area includes air-con (a/c) ledge, balcony and void where applicable. Please refer to the keyplan for orientation. The plans are subjected to change as may be approved by relevant authorities. All floor plans are approximate measurements only and are subjected to government re-survey. The balcony shall not be enclosed unless with the approved balcony screen.

# 1-BEDROOM

## TYPE A3

43 sq m / 463 sq ft

BLK 1  
 #04-09 to #23-09  
 #25-09 to #44-09



**LEGEND (WHERE APPLICABLE)**  
 DB Distribution Board WD Washer cum Dryer W/D Washer and Dryer F Fridge DW Dishwasher WIW Walk-In Wardrobe  
 WC Water Closet ST Storage HS Household Shelter TB Tallboy CH Wine Chiller

Area includes air-con (a/c) ledge, balcony and void where applicable. Please refer to the keyplan for orientation. The plans are subjected to change as may be approved by relevant authorities. All floor plans are approximate measurements only and are subjected to government re-survey. The balcony shall not be enclosed unless with the approved balcony screen.

# 1-BEDROOM + STUDY

## TYPE AS2a

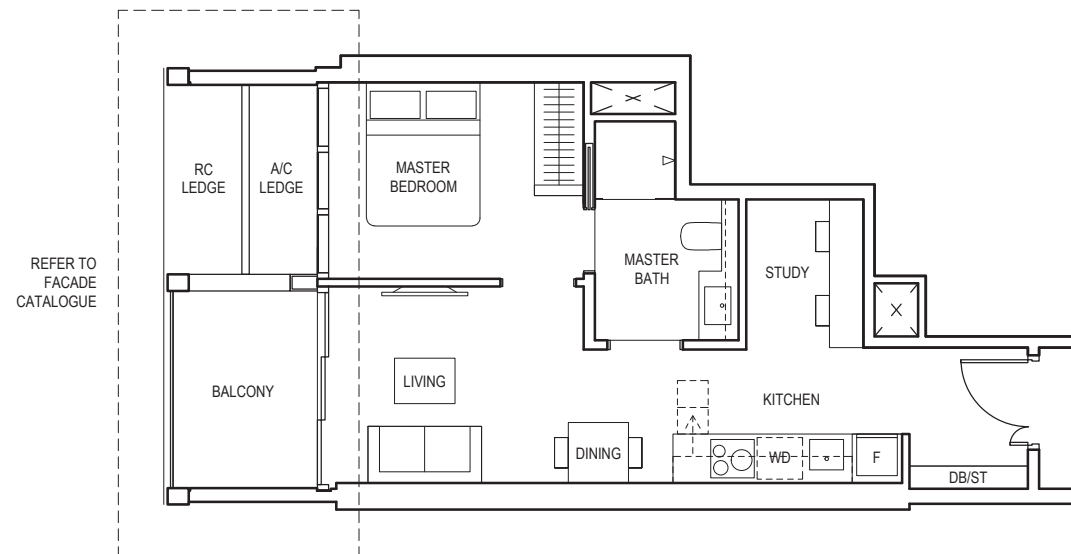
50 sq m / 538 sq ft

BLK 1  
#04-04 to #22-04  
#25-04 to #39-04

## TYPE AS2a(p)

50 sq m / 538 sq ft

BLK 1  
#23-04



**LEGEND (WHERE APPLICABLE)**  
**DB** Distribution Board    **WD** Washer cum Dryer    **WD** Washer and Dryer    **F** Fridge    **DW** Dishwasher    **WIW** Walk-In Wardrobe  
**WC** Water Closet    **ST** Storage    **HS** Household Shelter    **TB** Tallboy    **CH** Wine Chiller

Area includes air-con (a/c) ledge, balcony and void where applicable. Please refer to the keyplan for orientation. The plans are subjected to change as may be approved by relevant authorities. All floor plans are approximate measurements only and are subjected to government re-survey. The balcony shall not be enclosed unless with the approved balcony screen.

# 1-BEDROOM + STUDY

## TYPE AS3a

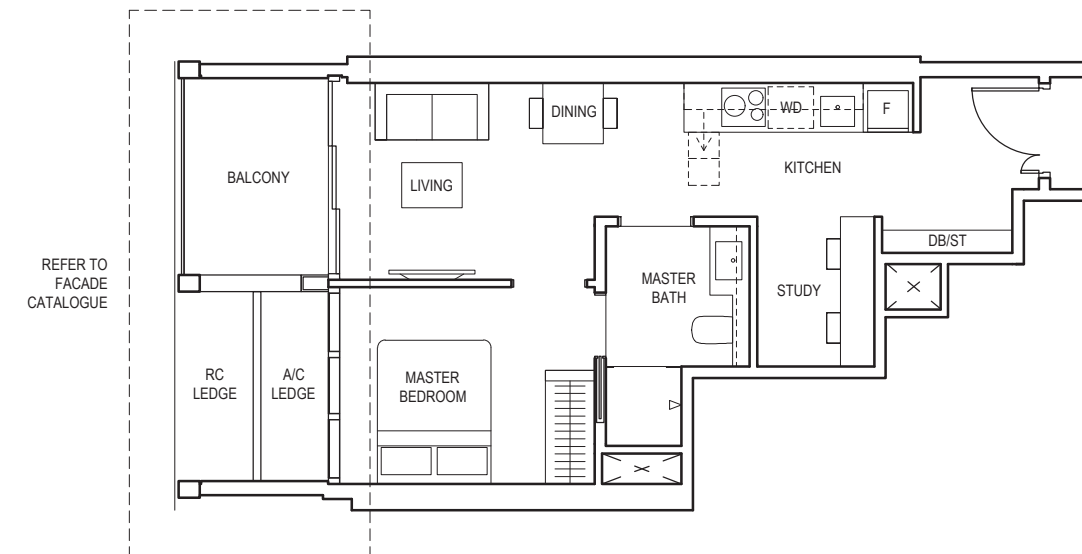
51 sq m / 549 sq ft

BLK 1  
#04-03 to #22-03  
#25-03 to #39-03

## TYPE AS3a(p)

51 sq m / 549 sq ft

BLK 1  
#23-03



**LEGEND (WHERE APPLICABLE)**  
**DB** Distribution Board    **WD** Washer cum Dryer    **WD** Washer and Dryer    **F** Fridge    **DW** Dishwasher    **WIW** Walk-In Wardrobe  
**WC** Water Closet    **ST** Storage    **HS** Household Shelter    **TB** Tallboy    **CH** Wine Chiller

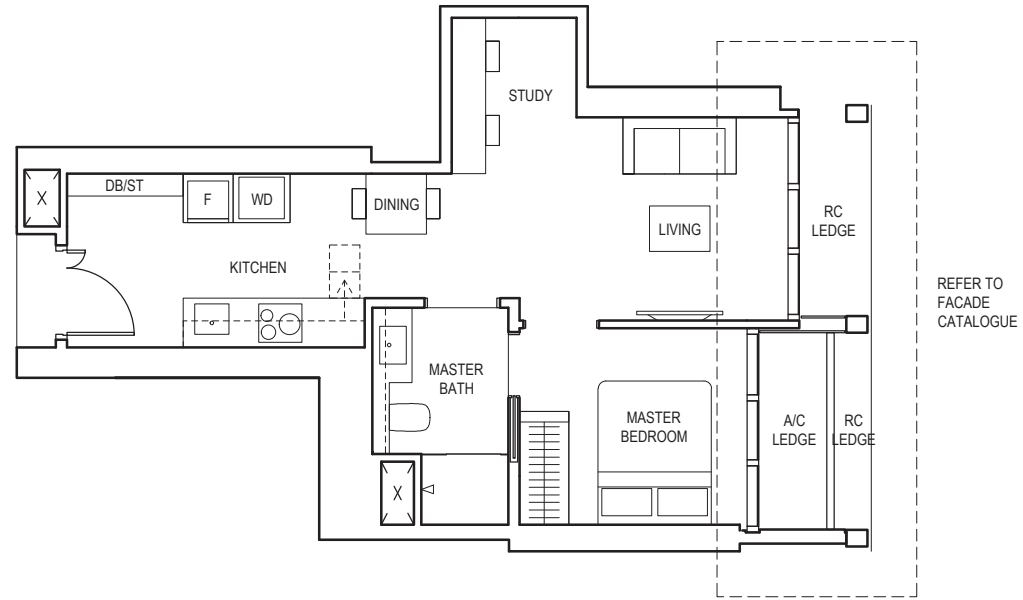
Area includes air-con (a/c) ledge, balcony and void where applicable. Please refer to the keyplan for orientation. The plans are subjected to change as may be approved by relevant authorities. All floor plans are approximate measurements only and are subjected to government re-survey. The balcony shall not be enclosed unless with the approved balcony screen.

# 1-BEDROOM + STUDY

## TYPE AS5

47 sq m / 506 sq ft

BLK 1  
#04-08 to #23-08



**LEGEND (WHERE APPLICABLE)**  
**DB** Distribution Board    **WD** Washer cum Dryer    **WD** Washer and Dryer    **F** Fridge    **DW** Dishwasher    **WIW** Walk-In Wardrobe  
**WC** Water Closet    **ST** Storage    **HS** Household Shelter    **TB** Tallboy    **CH** Wine Chiller

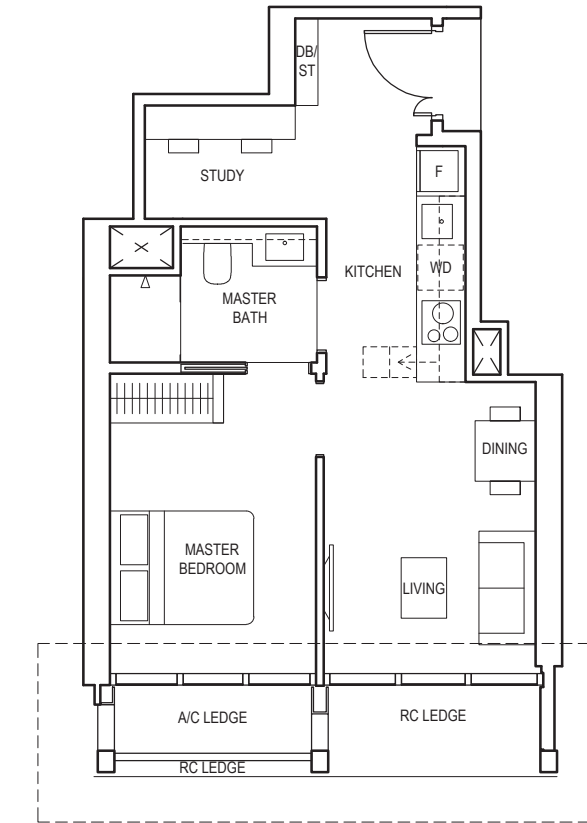
Area includes air-con (a/c) ledge, balcony and void where applicable. Please refer to the keyplan for orientation. The plans are subjected to change as may be approved by relevant authorities. All floor plans are approximate measurements only and are subjected to government re-survey. The balcony shall not be enclosed unless with the approved balcony screen.

# 1-BEDROOM + STUDY

## TYPE AS6

47 sq m / 506 sq ft

BLK 5  
#04-16 to #23-16



**LEGEND (WHERE APPLICABLE)**  
**DB** Distribution Board    **WD** Washer cum Dryer    **WD** Washer and Dryer    **F** Fridge    **DW** Dishwasher    **WIW** Walk-In Wardrobe  
**WC** Water Closet    **ST** Storage    **HS** Household Shelter    **TB** Tallboy    **CH** Wine Chiller

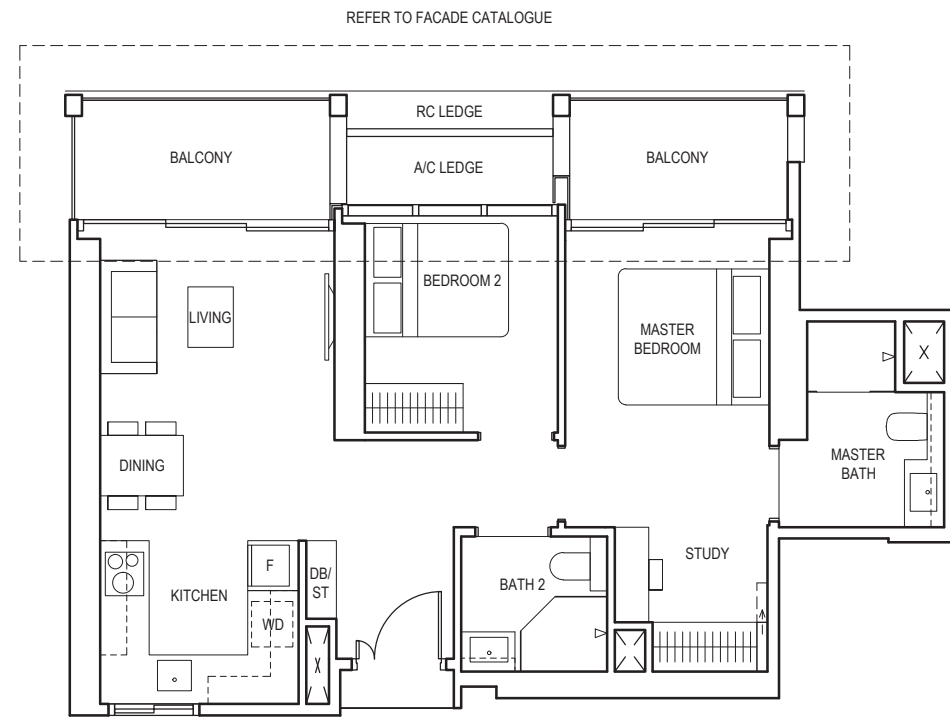
Area includes air-con (a/c) ledge, balcony and void where applicable. Please refer to the keyplan for orientation. The plans are subjected to change as may be approved by relevant authorities. All floor plans are approximate measurements only and are subjected to government re-survey. The balcony shall not be enclosed unless with the approved balcony screen.

# 2-BEDROOM + ENSUITE STUDY

## TYPE B1(S)

77 sq m / 829 sq ft

BLK 1  
#04-07 to #23-07



**LEGEND (WHERE APPLICABLE)**  
 DB Distribution Board    WD Washer cum Dryer    W/D Washer and Dryer    F Fridge    DW Dishwasher    WIW Walk-In Wardrobe  
 WC Water Closet    ST Storage    HS Household Shelter    TB Tallboy    CH Wine Chiller

Area includes air-con (a/c) ledge, balcony and void where applicable. Please refer to the keyplan for orientation. The plans are subjected to change as may be approved by relevant authorities. All floor plans are approximate measurements only and are subjected to government re-survey. The balcony shall not be enclosed unless with the approved balcony screen.

# 2-BEDROOM + STUDY

## TYPE BS1a

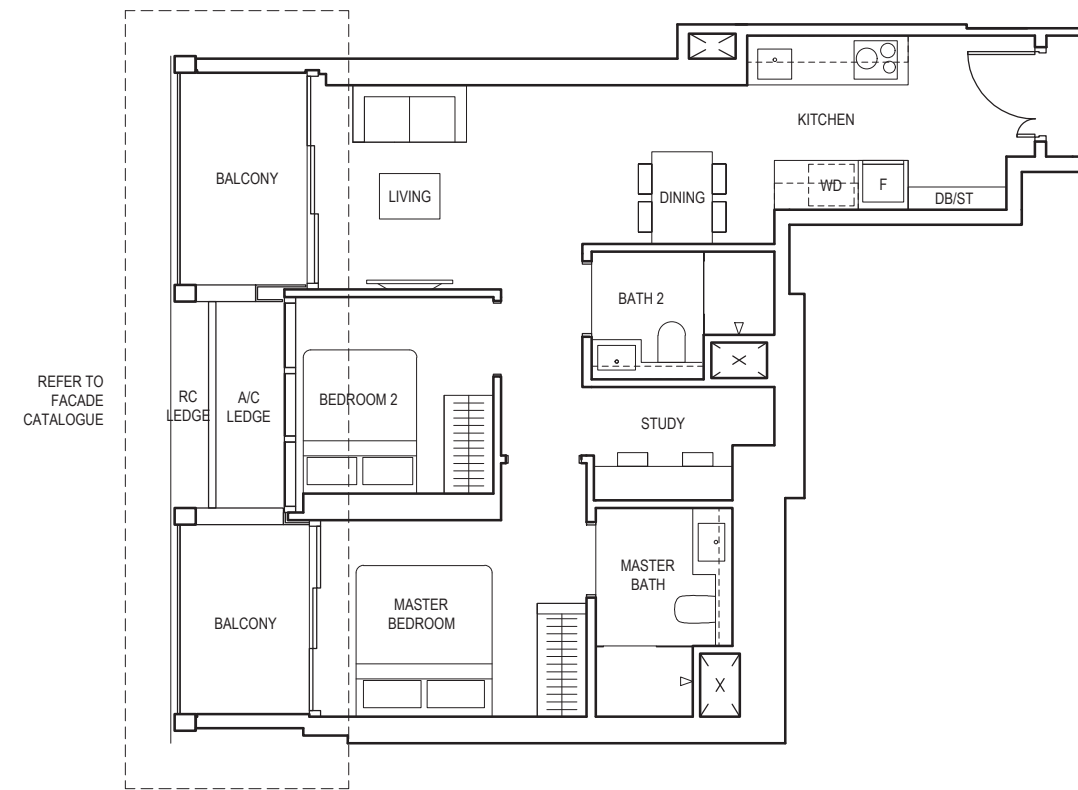
76 sq m / 818 sq ft

BLK 1  
#04-02 to #22-02  
#25-02 to #39-02

## TYPE BS1a(p)

76 sq m / 818 sq ft

BLK 1  
#23-02



**LEGEND (WHERE APPLICABLE)**  
 DB Distribution Board    WD Washer cum Dryer    W/D Washer and Dryer    F Fridge    DW Dishwasher    WIW Walk-In Wardrobe  
 WC Water Closet    ST Storage    HS Household Shelter    TB Tallboy    CH Wine Chiller

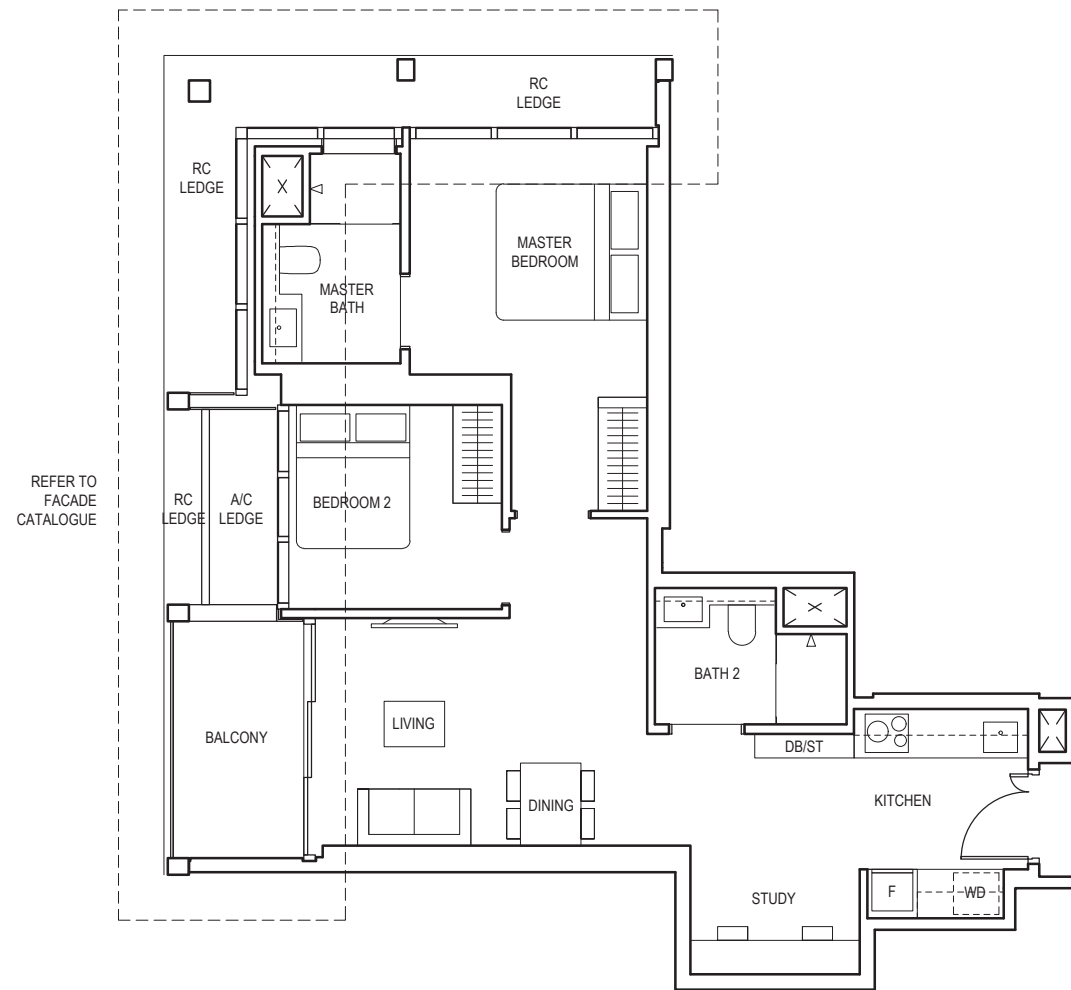
Area includes air-con (a/c) ledge, balcony and void where applicable. Please refer to the keyplan for orientation. The plans are subjected to change as may be approved by relevant authorities. All floor plans are approximate measurements only and are subjected to government re-survey. The balcony shall not be enclosed unless with the approved balcony screen.

# 2-BEDROOM + STUDY

## TYPE BS2a

77 sq m / 829 sq ft

BLK 1  
#04-05 to #22-05  
#25-05 to #39-05



## TYPE BS2a(p)

77 sq m / 829 sq ft

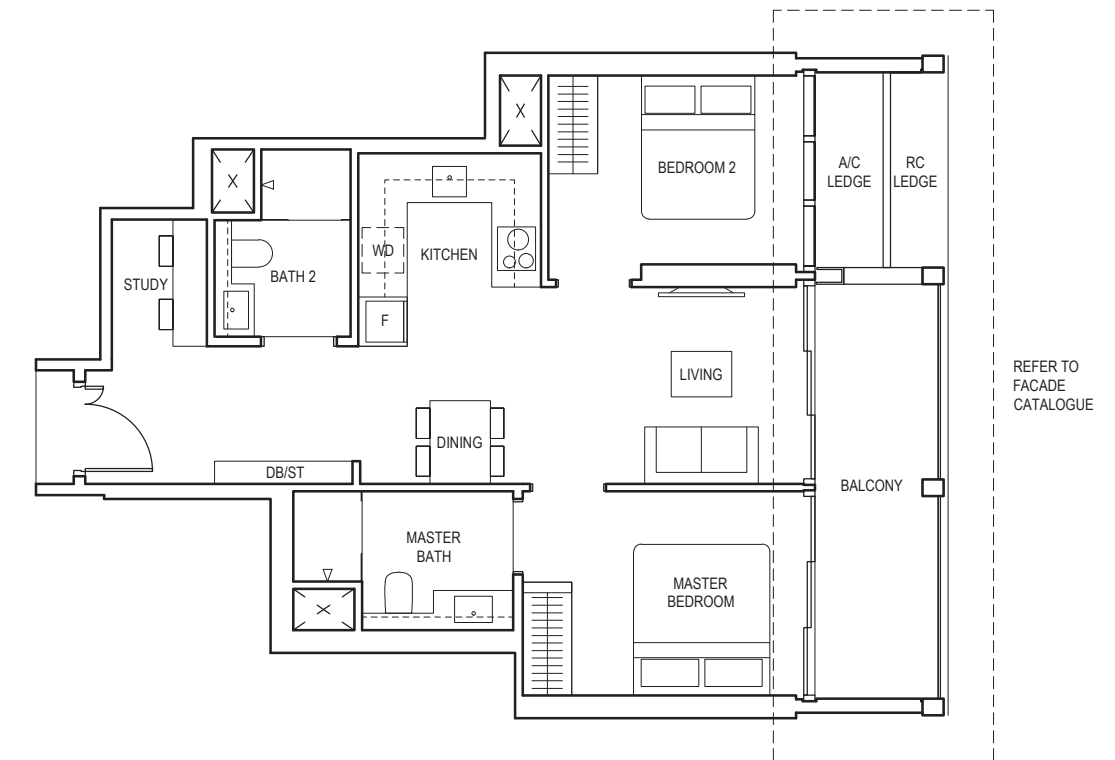
BLK 1  
#23-05

# 2-BEDROOM + STUDY

## TYPE BS4

75 sq m / 807 sq ft

BLK 5  
#04-25 to #23-25



**LEGEND (WHERE APPLICABLE)**  
**DB** Distribution Board    **WD** Washer cum Dryer    **WD** Washer and Dryer    **F** Fridge    **DW** Dishwasher    **WIW** Walk-In Wardrobe  
**WC** Water Closet    **ST** Storage    **HS** Household Shelter    **TB** Tallboy    **CH** Wine Chiller

Area includes air-con (a/c) ledge, balcony and void where applicable. Please refer to the keyplan for orientation. The plans are subjected to change as may be approved by relevant authorities. All floor plans are approximate measurements only and are subjected to government re-survey. The balcony shall not be enclosed unless with the approved balcony screen.



**LEGEND (WHERE APPLICABLE)**  
**DB** Distribution Board    **WD** Washer cum Dryer    **WD** Washer and Dryer    **F** Fridge    **DW** Dishwasher    **WIW** Walk-In Wardrobe  
**WC** Water Closet    **ST** Storage    **HS** Household Shelter    **TB** Tallboy    **CH** Wine Chiller

Area includes air-con (a/c) ledge, balcony and void where applicable. Please refer to the keyplan for orientation. The plans are subjected to change as may be approved by relevant authorities. All floor plans are approximate measurements only and are subjected to government re-survey. The balcony shall not be enclosed unless with the approved balcony screen.

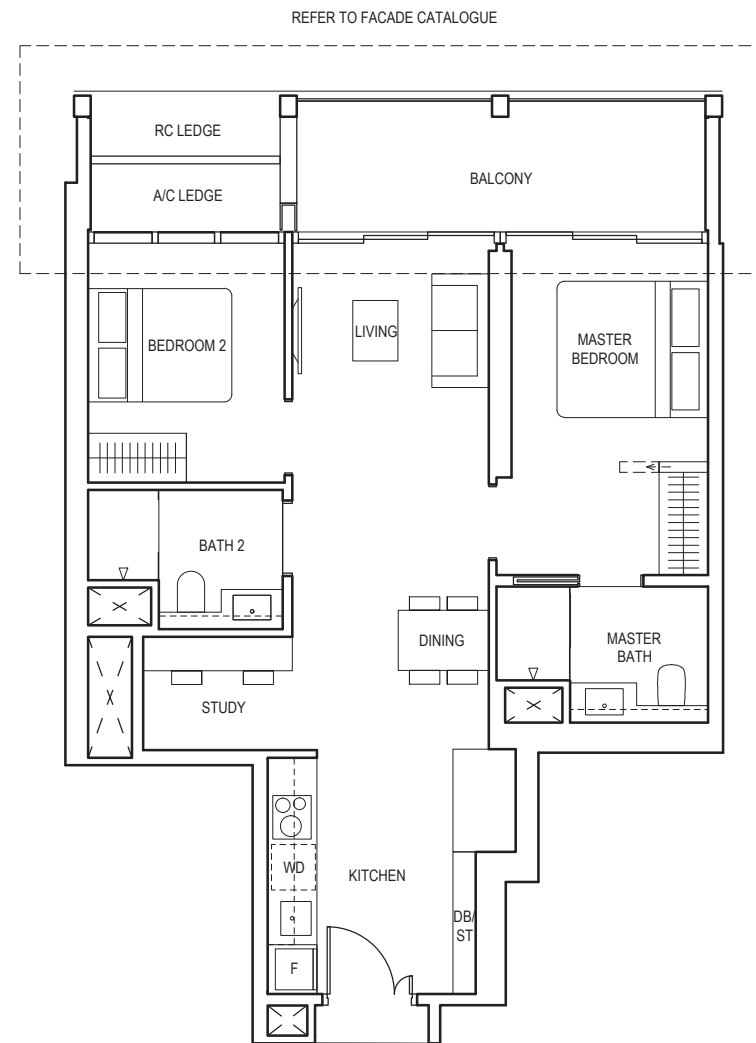


# 2-BEDROOM + STUDY

## TYPE BS5

80 sq m / 861 sq ft

BLK 5  
#04-21 to #23-21



**LEGEND (WHERE APPLICABLE)**  
 DB Distribution Board    WD Washer cum Dryer    W/D Washer and Dryer    F Fridge    DW Dishwasher    WIW Walk-In Wardrobe  
 WC Water Closet    ST Storage    HS Household Shelter    TB Tallboy    CH Wine Chiller

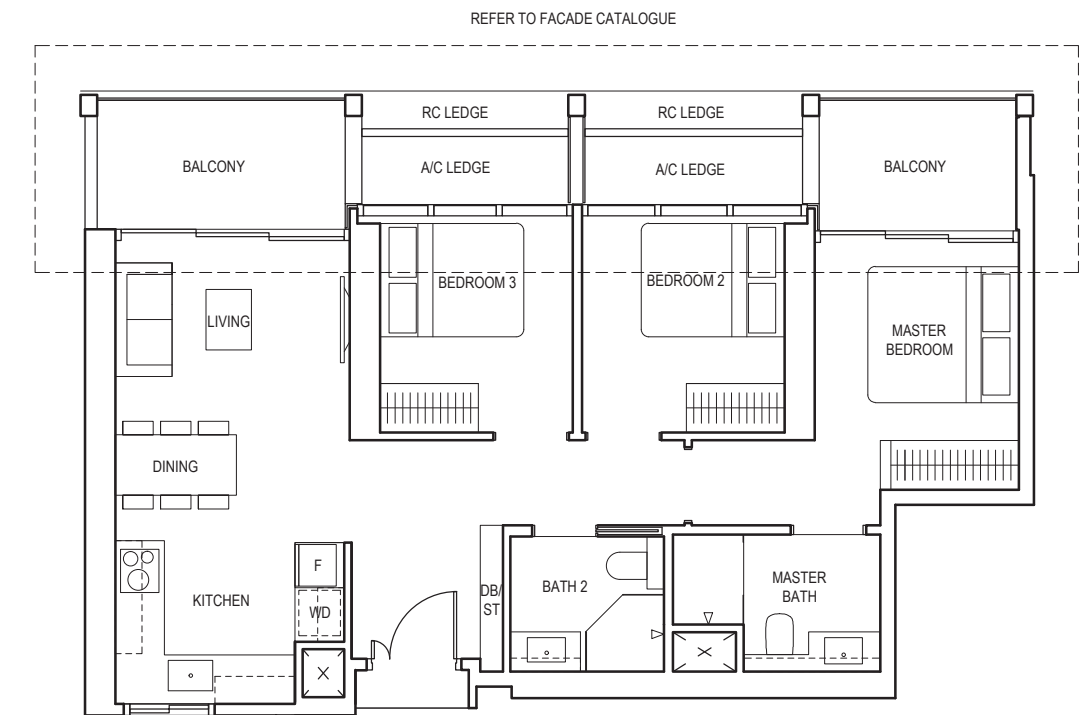
Area includes air-con (a/c) ledge, balcony and void where applicable. Please refer to the keyplan for orientation. The plans are subjected to change as may be approved by relevant authorities. All floor plans are approximate measurements only and are subjected to government re-survey. The balcony shall not be enclosed unless with the approved balcony screen.

# 3-BEDROOM

## TYPE C1a

88 sq m / 947 sq ft

BLK 1  
#25-07 to #39-07



**LEGEND (WHERE APPLICABLE)**  
 DB Distribution Board    WD Washer cum Dryer    W/D Washer and Dryer    F Fridge    DW Dishwasher    WIW Walk-In Wardrobe  
 WC Water Closet    ST Storage    HS Household Shelter    TB Tallboy    CH Wine Chiller

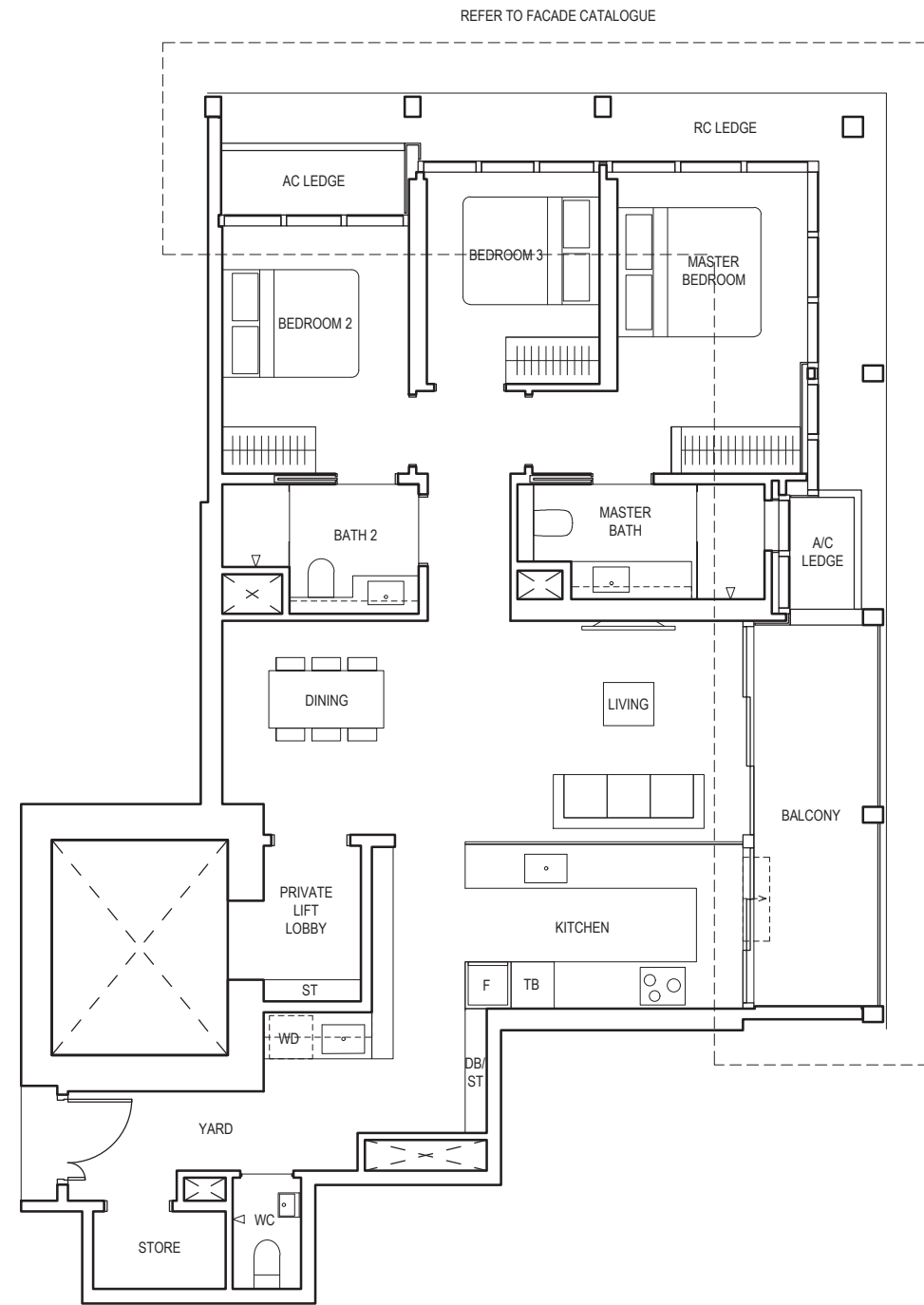
Area includes air-con (a/c) ledge, balcony and void where applicable. Please refer to the keyplan for orientation. The plans are subjected to change as may be approved by relevant authorities. All floor plans are approximate measurements only and are subjected to government re-survey. The balcony shall not be enclosed unless with the approved balcony screen.

# 3-BEDROOM PREMIUM

## TYPE CP1

122 sq m / 1313 sq ft

BLK 5  
#04-23 to #23-23



**LEGEND (WHERE APPLICABLE)**  
 DB Distribution Board    WD Washer cum Dryer    W/D Washer and Dryer    F Fridge    DW Dishwasher    WIW Walk-In Wardrobe  
 WC Water Closet    ST Storage    HS Household Shelter    TB Tallboy    CH Wine Chiller

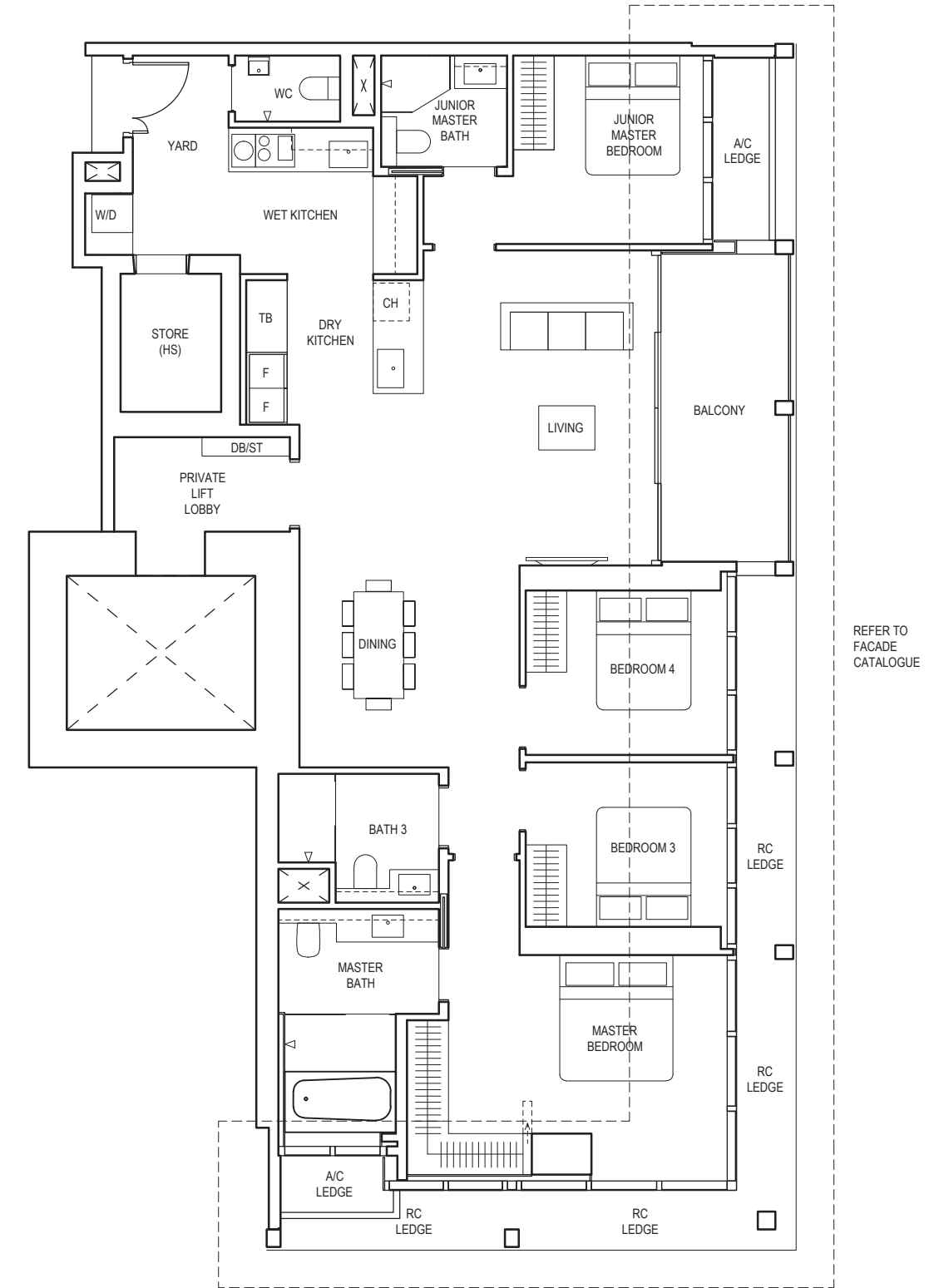
Area includes air-con (a/c) ledge, balcony and void where applicable. Please refer to the keyplan for orientation. The plans are subjected to change as may be approved by relevant authorities. All floor plans are approximate measurements only and are subjected to government re-survey. The balcony shall not be enclosed unless with the approved balcony screen.

# 4-BEDROOM PREMIUM

## TYPE DP1

163 sq m / 1755 sq ft

BLK 1  
#25-10 to #44-10



**LEGEND (WHERE APPLICABLE)**  
 DB Distribution Board    WD Washer cum Dryer    W/D Washer and Dryer    F Fridge    DW Dishwasher    WIW Walk-In Wardrobe  
 WC Water Closet    ST Storage    HS Household Shelter    TB Tallboy    CH Wine Chiller

Area includes air-con (a/c) ledge, balcony and void where applicable. Please refer to the keyplan for orientation. The plans are subjected to change as may be approved by relevant authorities. All floor plans are approximate measurements only and are subjected to government re-survey. The balcony shall not be enclosed unless with the approved balcony screen.

# 4-BEDROOM PREMIUM

## TYPE DP2

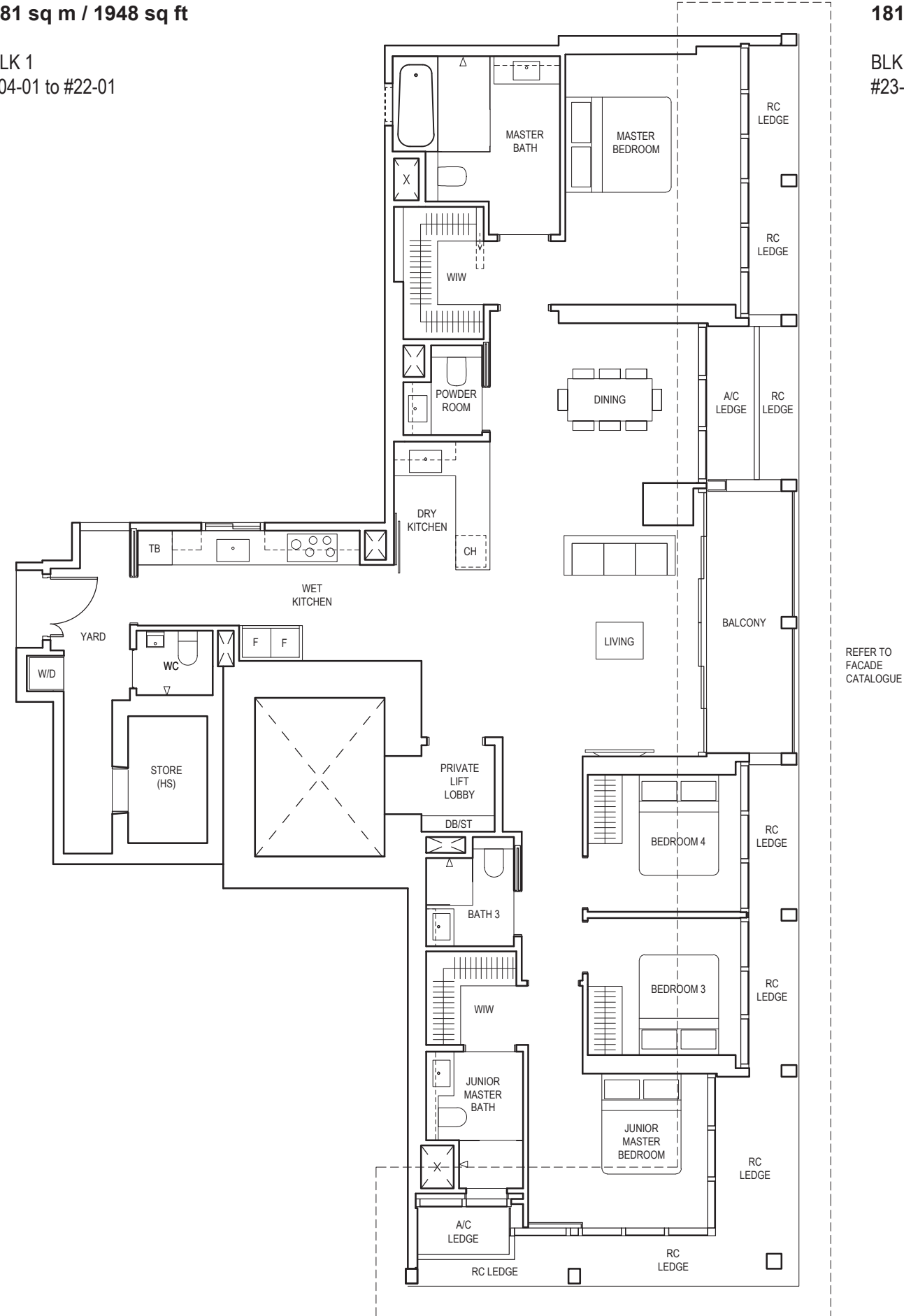
181 sq m / 1948 sq ft

BLK 1  
#04-01 to #22-01

## TYPE DP2(p)

181 sq m / 1948 sq ft

BLK 1  
#23-01



REFER TO  
FACADE  
CATALOGUE



**LEGEND (WHERE APPLICABLE)**  
 DB Distribution Board    WD Washer cum Dryer    W/D Washer and Dryer    F Fridge    DW Dishwasher    WIW Walk-In Wardrobe  
 WC Water Closet    ST Storage    HS Household Shelter    TB Tallboy    CH Wine Chiller

Area includes air-con (a/c) ledge, balcony and void where applicable. Please refer to the keyplan for orientation. The plans are subjected to change as may be approved by relevant authorities. All floor plans are approximate measurements only and are subjected to government re-survey. The balcony shall not be enclosed unless with the approved balcony screen.

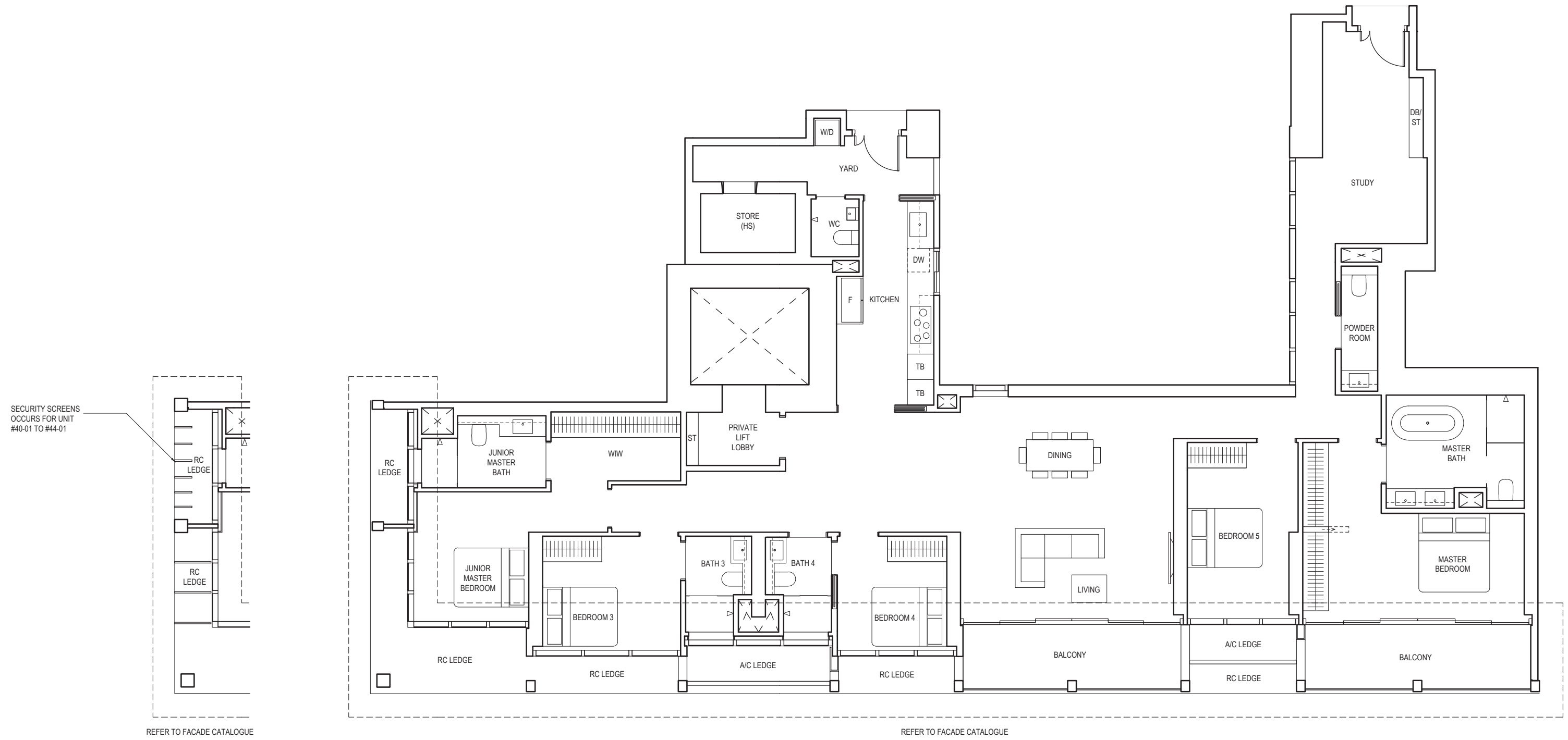
BASK IN THE  
SPACIOUSNESS  
OF A RARE  
CITY HOME

# 5-BEDROOM PREMIUM

## TYPE EP1

259 sq m / 2788 sq ft

BLK 1  
#25-01 to #44-01

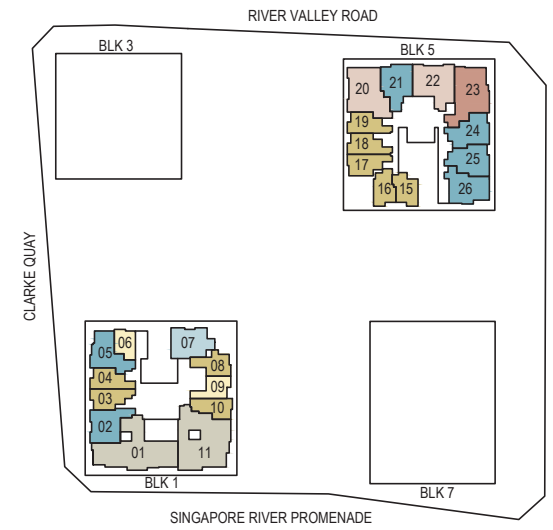


**LEGEND (WHERE APPLICABLE)**  
 DB Distribution Board    WD Washer cum Dryer    W/D Washer and Dryer    F Fridge    DW Dishwasher    WIW Walk-In Wardrobe  
 WC Water Closet    ST Storage    HS Household Shelter    TB Tallboy    CH Wine Chiller

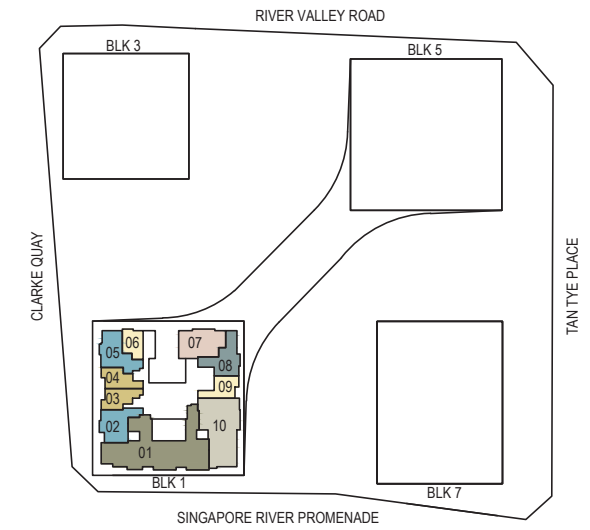
Area includes air-con (a/c) ledge, balcony and void where applicable. Please refer to the keyplan for orientation. The plans are subjected to change as may be approved by relevant authorities. All floor plans are approximate measurements only and are subjected to government re-survey. The balcony shall not be enclosed unless with the approved balcony screen.

# RESIDENTIAL STOREY KEY PLANS

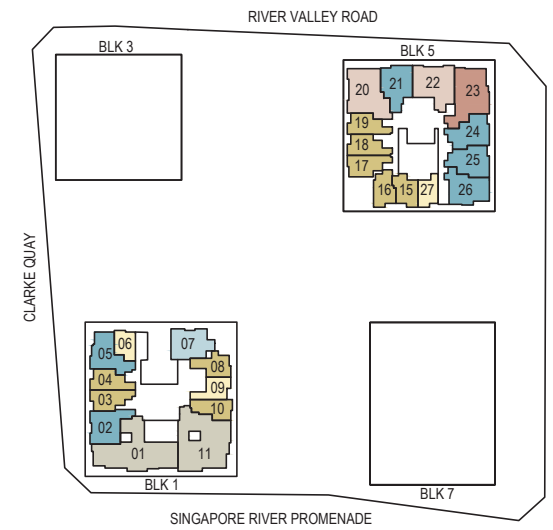
4TH - 7TH STOREY



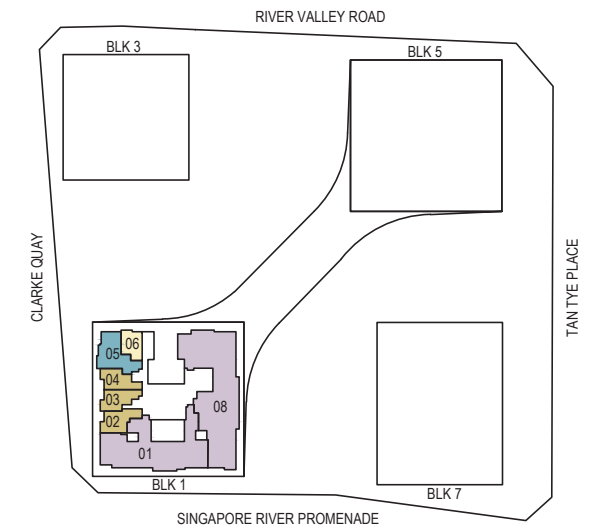
40TH - 44TH STOREY



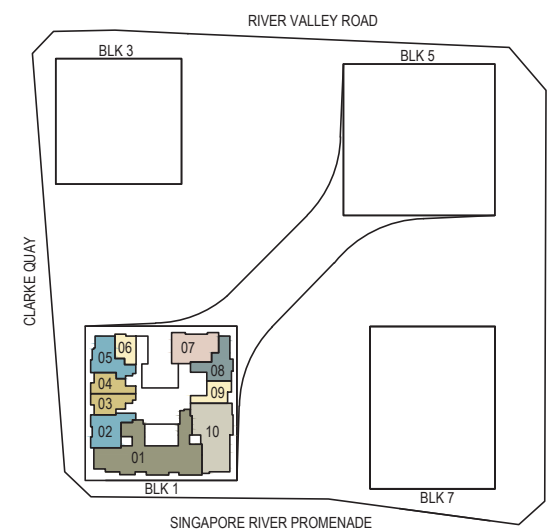
8TH - 23RD STOREY



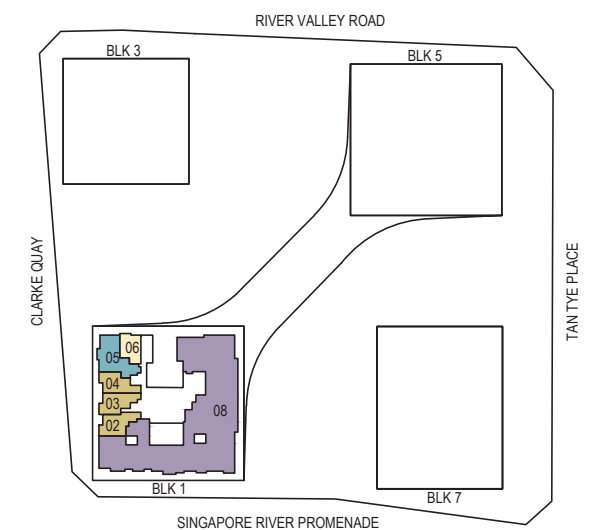
46TH - 47TH STOREY



25TH - 39TH STOREY



48TH STOREY



- |                   |                           |                   |                   |
|-------------------|---------------------------|-------------------|-------------------|
| 1-BEDROOM         | 2-BEDROOM                 | 3-BEDROOM         | 5-BEDROOM PREMIUM |
| 1-BEDROOM + STUDY | 2-BEDROOM + ENSUITE STUDY | 3-BEDROOM PREMIUM | SKY SUITE         |
|                   | 2-BEDROOM + STUDY         | 4-BEDROOM PREMIUM | SUPER PENTHOUSE   |

JOINTLY DEVELOPED BY:



Developer: Legend Quay Pte. Ltd. (Registration No. 201914652M), Legend Commercial Trustee Pte. Ltd. (Registration No. 201914656R) (in its capacity as trustee-manager of Legend Commercial Trust), DBS Trustee Limited (Registration No. 197502043G) (in its capacity as trustee of Gemini One Trust) and DBS Trustee Limited (Registration No. 197502043G) (in its capacity as trustee of Ascott Real Estate Investment Trust) • Housing Developer's Licence No.: C1407 • Vendor: Legend Quay Pte. Ltd. • Tenure of Land: Leasehold tenure of 99 years commencing from 17 September 2021 • Lot No.: Lot 147V of TS 9 at River Valley Road • Expected Date of Vacant Possession: 31 December 2026 • Expected Date of Legal Completion: 31 December 2029

While reasonable care has been taken in the preparation of this brochure, neither the developer nor its agents will be held responsible for any inaccuracies or omissions. To the extent permissible by law, the statements, information and depictions in this brochure may not be relied upon as statements or representations of fact, and they are not intended to form any part of the contract for the sale of the housing units. In particular, visual representations such as renderings, illustrations, pictures and drawings are artists' impressions only and photographs are only decor suggestions and cannot be regarded as representations of fact. The brand, colour and model of all materials, fittings, equipment, finishes, installations and appliances supplied shall be provided subject to the developer's architect's selection, market availability and at the sole discretion of the developer. All information and specifications contained in this brochure are current at the time of going to press and are subject to such changes as are required by the relevant authorities or the developer. All plans and models are not to scale unless expressly stated and are subject to any amendments which are required or approved by the relevant authorities. All areas and measurements stated in the brochure are approximate only and subject to final survey. The Sale and Purchase Agreement embodies all the terms and conditions between the developer and the purchaser and supercedes and cancels in all respects all previous representations, warranties, promises, inducements or statements of intention, whether written or oral made by the developer and/or the developer's agent which are not embodied in the Sale and Purchase Agreement.

Premier Residential Services: Please note that the use of these services and facilities are chargeable as they are provided by third-party service providers ("Service Providers"). While our Residential Host will assist in making arrangements, all costs incurred for use of these services and facilities are to be borne by residents. Provision of these services and facilities may be modified according to availability and at the discretion of the Service Providers. The Service Providers also reserve the right to terminate the services and facilities without prior notice. Other terms and conditions apply. Visual representations are not representations of the actual provision.

Smart Home: The unit will be supplied and installed with the following items ("SMART Home System"): a) Smart Home Gateway, b) Smart Speaker and Voice Control Assistant, c) IP Camera (only applicable for units with private lift), d) Tablet Central Console, e) Motion Sensor, f) Digital Lockset, g) Doorbell with Camera, h) Lighting Control, i) Energy Monitoring, j) Homehub Siren Alarm, k) Air-Conditioning Control System, l) Home Fire Alarm Device (HFAD). The make, model, brand, design and technology of the SMART Home System to be supplied and installed in the actual unit may differ from the above illustration and are subject to change. Terms and conditions apply. Buyers shall be required to liaise with the smart home vendor instead of the developer to make all arrangements for the set up and configuration of, and for any queries, defects, maintenance and/or upgrade issues with the SMART Home System at buyers' own costs. Items/devices which are not listed above are not included in the SMART Home System and may be purchased from the smart home vendor directly and installed at buyers' own costs after the handover of the unit.

This brochure is printed on eco-friendly paper, October 2021.

Key plans are not drawn to scale. The shading and outline of the key plans are for illustrative purposes only. The boundary lines of the units set out here are not to be taken as a factual representation of the actual units. Kindly refer to the approved building plans for the actual unit outline/boundary lines.