



Scale 0 200 400 Metres  
100 300 500



#### LEGEND:

- MRT Line & Station (Under Construction)
- LRT Line & Station

- Existing Eating House/Shops/Kiosk (u/c) Under Construction
- Existing Shops/Minimart/Kiosk

#### Notes:

All proposed developments are subject to change and planning approval.  
Proposed Civic & Community Institution includes examples like Community Centre/Club, Association, Home for the Aged, etc., subject to change and planning approval.  
Proposed Place of Worship includes examples like Church, Mosque, Chinese Temple, Hindu Temple, etc., subject to change and planning approval.

The information contained herein is subject to change at any time without notice and cannot form part of an offer or contract. The proposed facilities and their locations as shown are only estimates. The proposed facilities may include other ancillary uses allowed under URA's prevailing Development Control guidelines. For example, places of worship may also include columbarium as an ancillary use, while community centres may also include childcare centres. The implementation of the facilities is subject to review by the Government or competent authorities. While reasonable care has been taken in providing this information, HDB shall not be responsible in any way for any damage or loss suffered by any person whether directly or indirectly as a result of reliance on the said information or as a result of any error or omission therein.



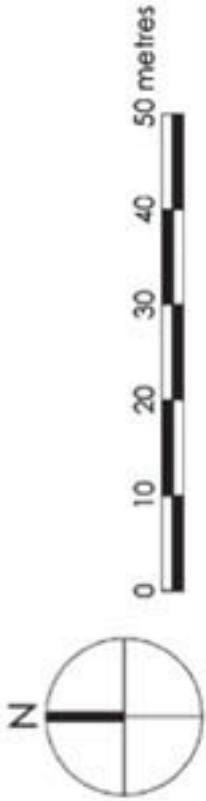


**LEGEND**

- 2 - Room
- 3 - Room
- 4 - Room
- Surrounding Buildings
- Precinct Pavilion / Pergola / Trellis
- Drop-off Porch / Shelter / Linkway
- Future Community Facilities at 1st Storey (FCF)
- Reserved for / Existing Development
- Children Playground (PG) / Landscaped Plaza (LP) / Central Plaza (CP) / Adult Fitness Station (AFS) / Elderly Fitness Station (EFS)
- MPC
- Open Space
- Staircase
- Carparking
- Electrical Sub-station (ESS) / Utilities Centre (UC) at 1st Storey
- Air-well
- Service Road / Driveway
- Lift
- Centralised Refuse Chute
- Service Bay

Block Number	Number of storeys	2 ROOM Apartment	3 ROOM Apartment	4 ROOM Apartment	Total	Lift opens at
636A	29	112	112	-	224	Every Storey
636B	27	-	-	171	171	Every Storey
636C	27	-	-	182	182	Every Storey
<b>Total</b>		<b>112</b>	<b>112</b>	<b>353</b>	<b>577</b>	

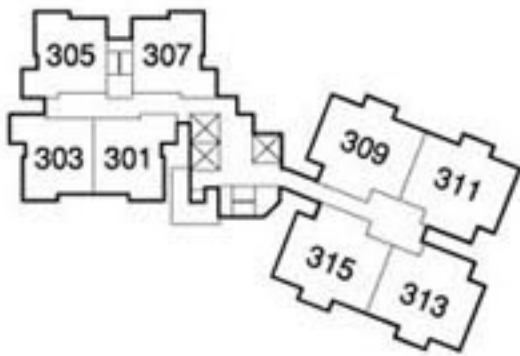
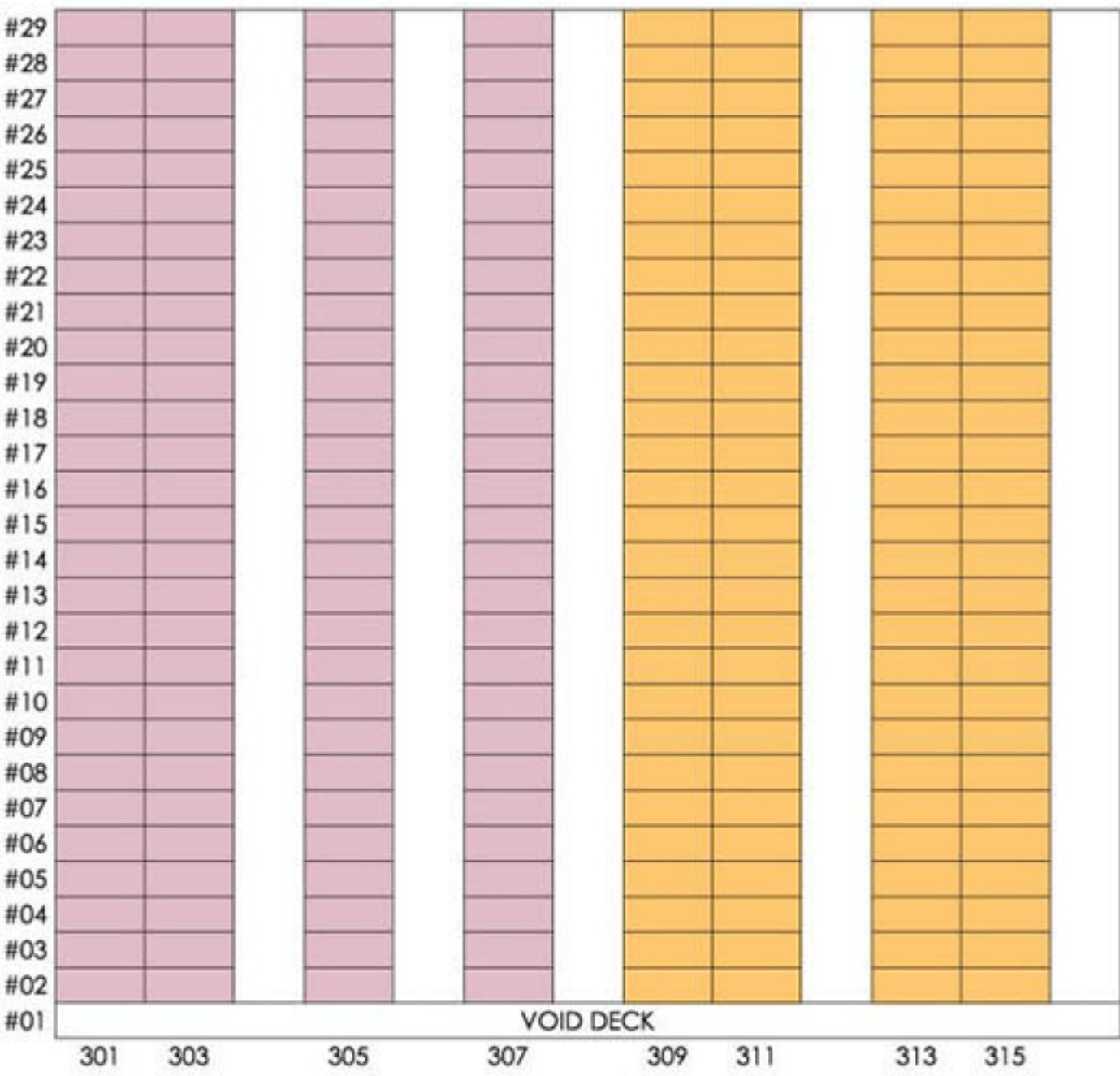
The information contained herein is subject to change at any time without notice and cannot form part of an offer or contract. The proposed facilities and their locations as shown are only estimates. The proposed facilities may include other ancillary uses allowed under URA's prevailing Development Control guidelines. For example, places of worship may also include columbarium as an ancillary use, while community centres may also include childcare centres. The implementation of the facilities is subject to review by the Government or competent authorities. While reasonable care has been taken in providing this information, HDB shall not be responsible in any way for any damage or loss suffered by any person whether directly or indirectly as a result of reliance on the said information or as a result of any error or omission therein.





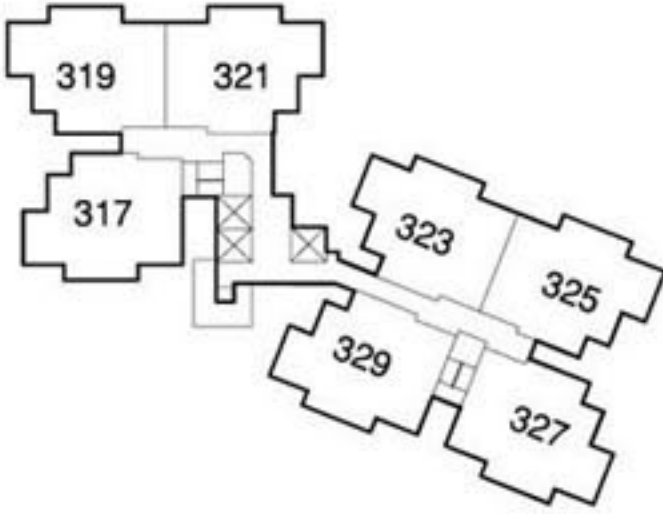
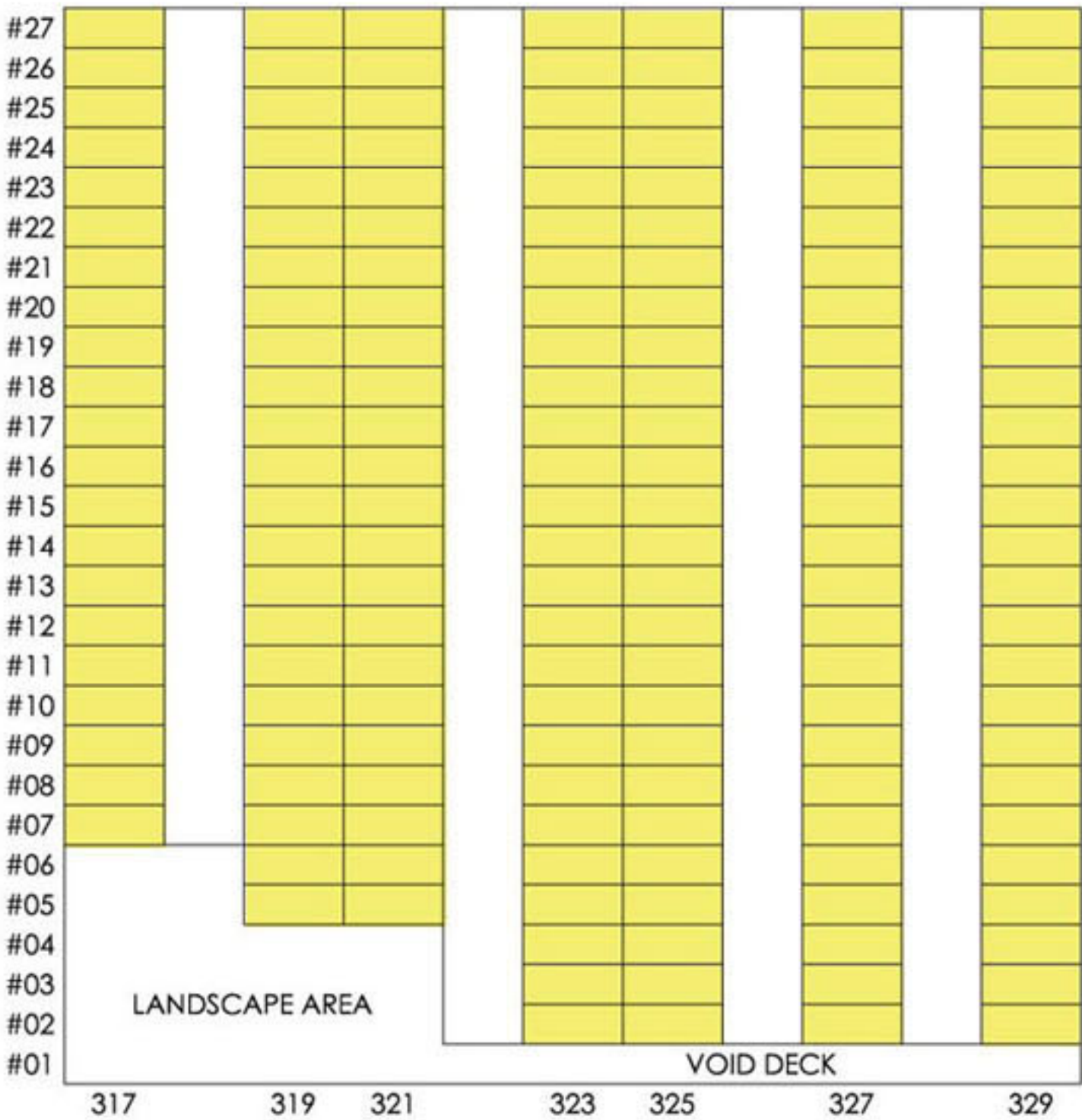


Unit Distribution



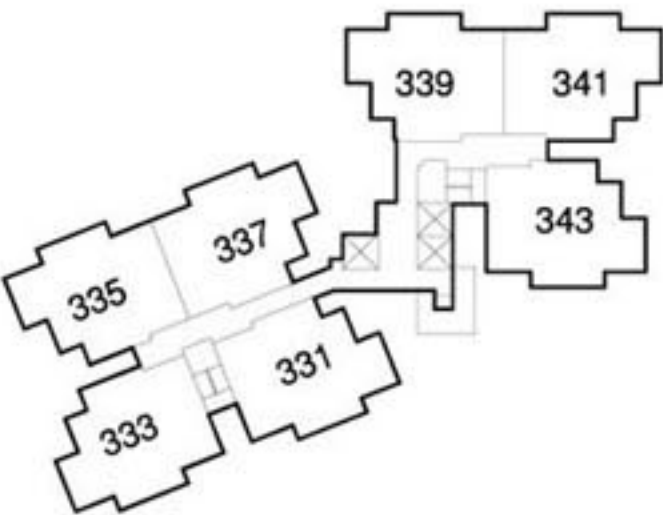
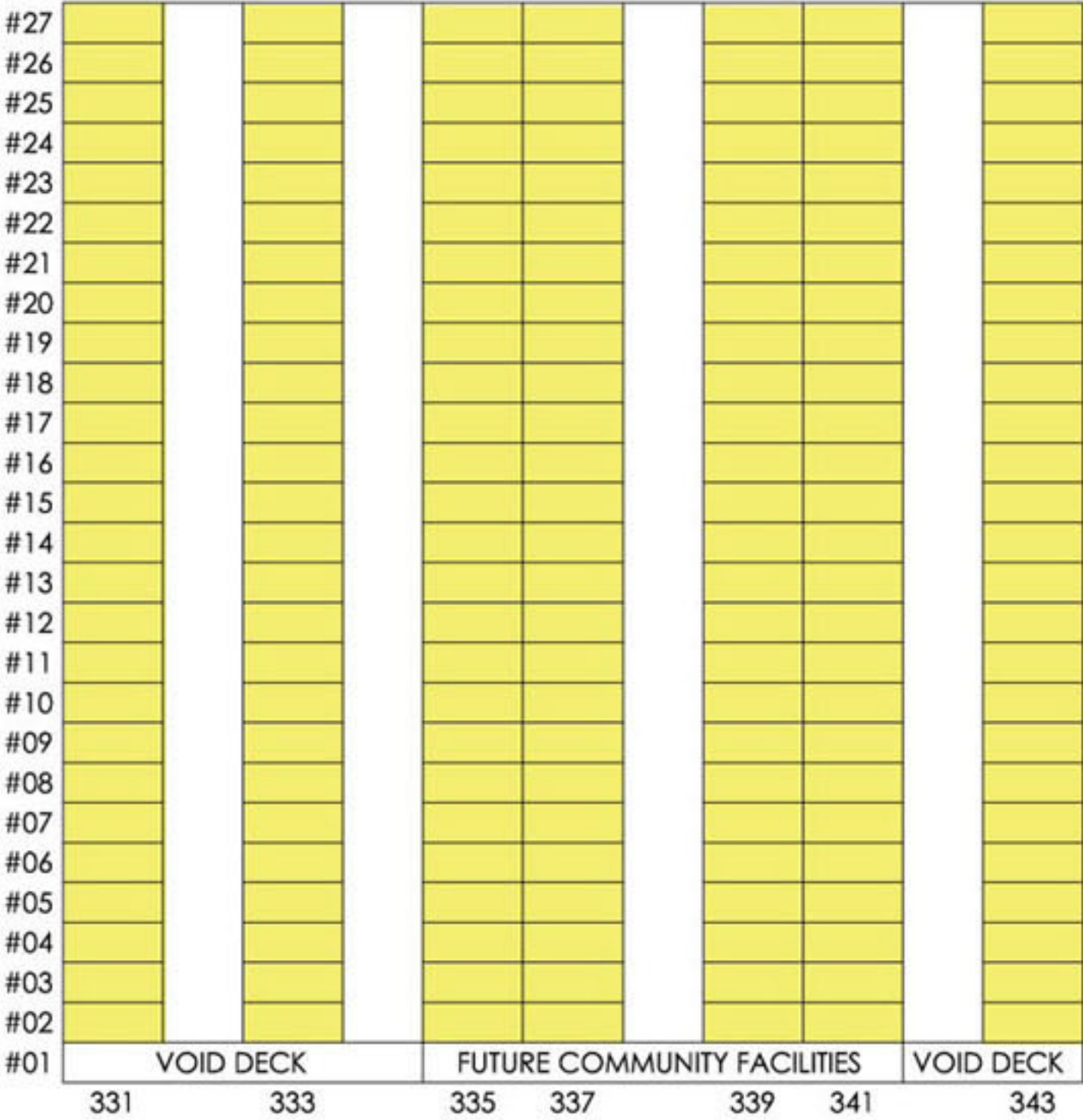
BLOCK 636A

2 ROOM  
3 ROOM



BLOCK 636B

4 ROOM



BLOCK 636C

4 ROOM





## **GENERAL SPECIFICATIONS FOR SENJA PARC VIEW**

### **Foundation**

Piled foundations.

### **Structure**

Reinforced concrete structural framework with reinforced concrete slabs.

### **Roof**

Reinforced concrete roof slab with precast concrete secondary roofing.

### **Walls**

All external and internal walls are constructed with reinforced concrete/ solid blocks/ bricks with cement plastering/ precast panels/ precast lightweight concrete partitions.

### **Windows**

Aluminium framed windows with tinted glass.

### **Doors**

Entrance	: decorative solid timber door and metal gate
Bedrooms	: laminated semi-solid timber door (Type D9a) (optional)
Bathrooms/WC	: laminated semi-solid timber door for 3 & 4 Room (Type D9a) (optional)
	: acrylic panel folding door for 2-Room
Household Shelter	: metal door
Service Yard	: aluminium framed door with glass

### **Finishes**

Ceilings	: skim coated or plastered and painted
Kitchen/Bathrooms/WC walls	: glazed ceramic tiles
Other walls	: skim coated or plastered and painted
Living/Dining/Bedrooms floor	: ceramic tiles with timber skirting (Optional)
Kitchen/Bathrooms/WC floor	: ceramic tiles
Service Yard floor	: ceramic tiles with tile skirting
Household Shelter floor	: ceramic tiles

### **Fittings**

Quality locksets.  
Quality sanitary fittings.  
Wash basin for Bathroom/ WC.  
Clothes drying rack.

### **Services**

Gas services and concealed water supply pipes.  
Concealed electrical wiring to lighting and power points (including water heater and air-conditioning points).  
Television points.  
Telephone points.

### **Important Notes:**

- 1) The Household Shelter is designed for use as civil defence shelter. The walls, ceiling, floor and door of the Household Shelter shall not be hacked, drilled, altered or removed.
- 2) Air-con panel in the main bedroom will not be provided..
- 3) Any unused or unoccupied open spaces in front of or nearby/ adjacent to the flat units are not available for purchase and that the HDB will not entertain any requests from the flat owners to purchase and/ or enclose the unused or unoccupied open spaces.

You are advised to visit HDB's website at [www.hdb.gov.sg](http://www.hdb.gov.sg) for information on renovation rules.

The plans and information in this brochure are the copyright of the Housing & Development Board (HDB), Singapore. The HDB reserves the right at any time without notice and at its sole discretion to change any aspect of this project including but not limited to the omission, amalgamation of or increasing or reducing the communal facilities and amenities. All art renderings, illustrations, pictures, photographs and other graphic representations and references are artist's impressions only. Similarly, all dimensions, areas, plans, colour schemes, descriptions and specifications noted herein are subject to change or alteration without notice if required by the Competent Authority or at HDB's sole and absolute discretion. The HDB will not entertain any request for alteration of the layout or specifications of a flat, to meet individual needs. The void deck in any apartment block may subsequently be used for facilities, such as child care centres, education centres, residents' committee centres and such other facilities as HDB shall deem fit.

*The Floor Areas are scaled Strata Areas.*